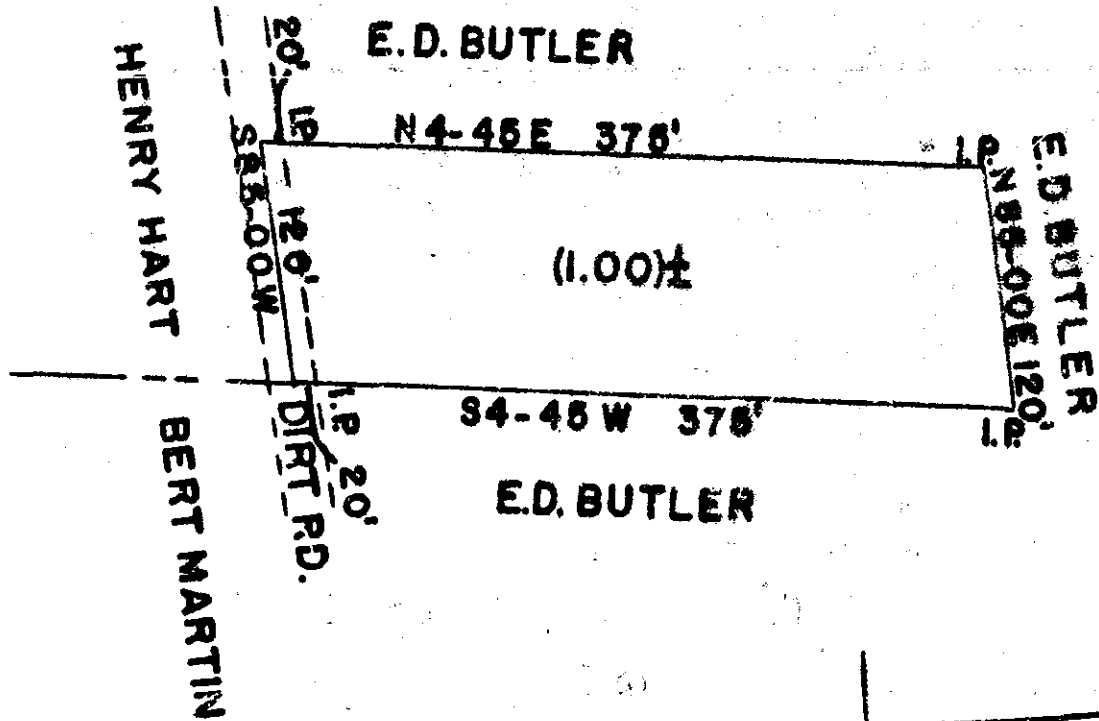


# Plat Book SS, Page 197B



STATE OF SOUTH CAROLINA  
GREENVILLE COUNTY

THE ABOVE PLAT REPRESENTS A TRACT OF LAND  
BEING A PORTION OF E.D. BUTLER LAND. SAID  
TRACT IS TO BE DEEDED TO JOHN W. BUTLER.

SURVEYED JULY 3, 1959

JOHN C. S. FINE  
REG. L.S. NO. 1443

1" = 100'

ELCP-0

JUL 22 1959

2804

SS-197

501