

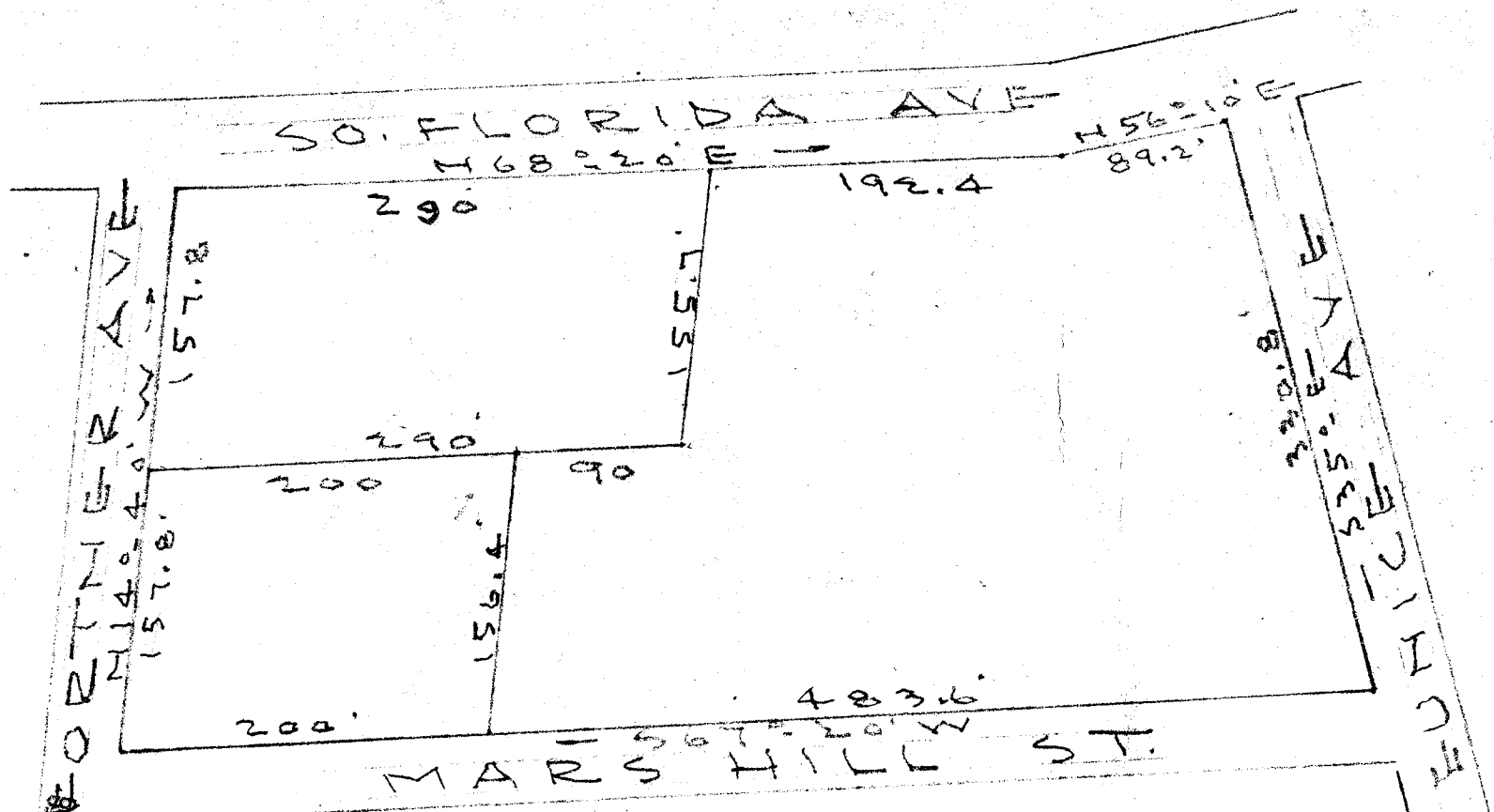
DEC 12 1958

14938

FILED  
GREENVILLE CO. S.C.

DEC 12 12 02 PM 1958

OLLIE FARMWORTH  
R.M.C.



FORTHER PARK

BLOCK No. 4

Greenville - S.C.

Scale 1" = 100' - Oct. 23 - 58

99-73

Iron pins at all corners.  
Magnetic bearings.

Part in 574

J.C. Hill - L.S. 805

See proper plat see page 58

14938 Filed This 12 day of Dec. 19 58

and Recorded in Vol. 99 Page 73 at

Ollie Farmworth

Register Mesne Conveyance Greenville County, S.C.