

SECTION A
 MAP OF
 GOWER ESTATES

IN AND ADJOINING
 GREENVILLE S. C.

Scale 1"=100' January 1960

NOTE:

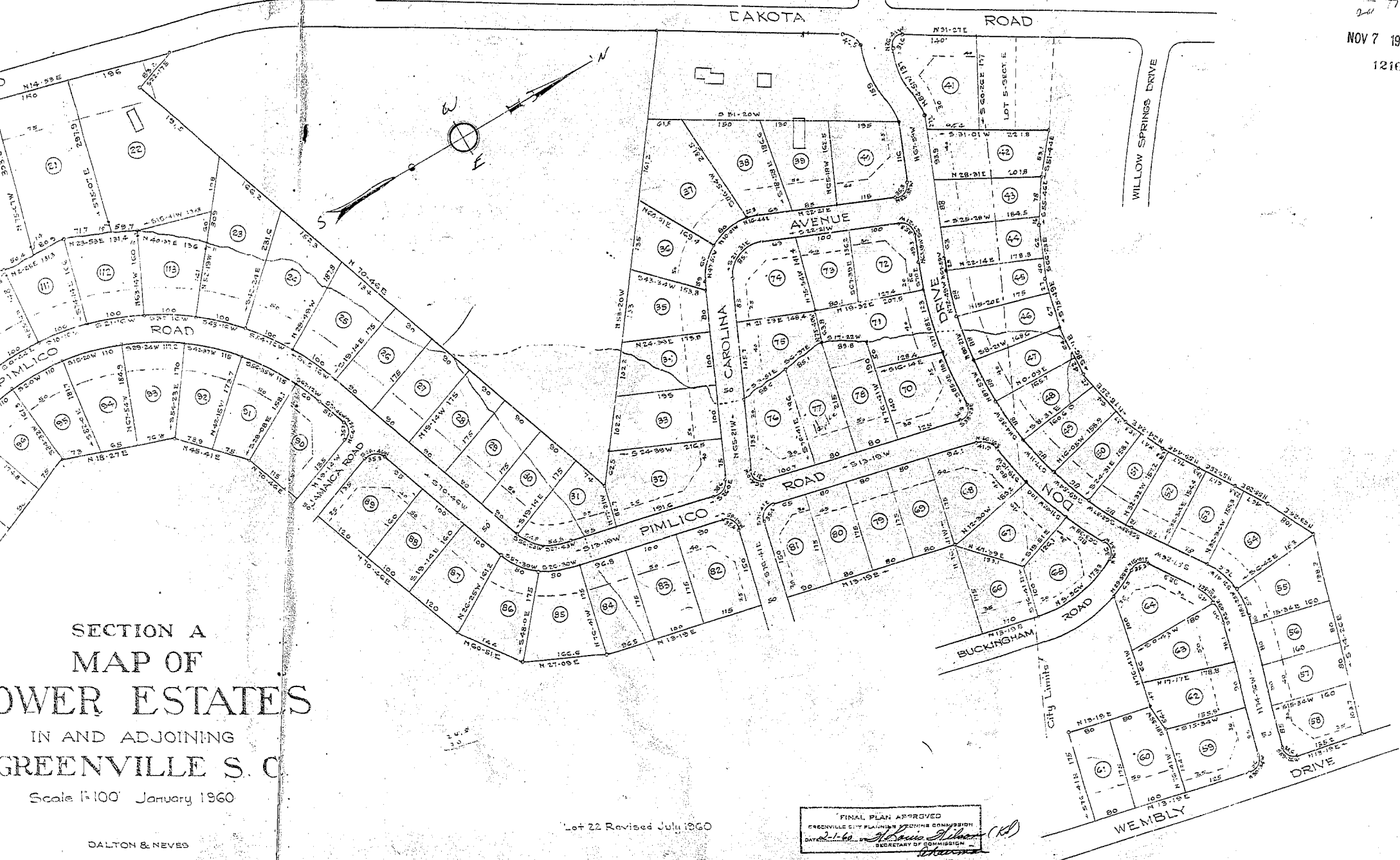
Iron Pins at all Corners except rear of Lots on Creek where Corners are as shown.
 There is a 5ft Easement on each side of the Creek
 and a 5ft. Easement along all rear and side Lot Lines
 for Drainage and Utilities.

DALTON & NEVES

Lot 22 Revised July 1960

NOV 7 11 24 AM 1960
12169

NOV 7 1960
12169



SECTION A
MAP OF
LOWER ESTATES

IN AND ADJOINING
GREENVILLE S. C.

Scale 1"=100' January 1960

DALTON & NEVES

Lot 22 Revised July 1960

FINAL PLAN APPROVED
GREENVILLE CITY PLANNING AND ZONING COMMISSION
DATE 2-1-60 BY *[Signature]*
SECRETARY OF COMMISSION