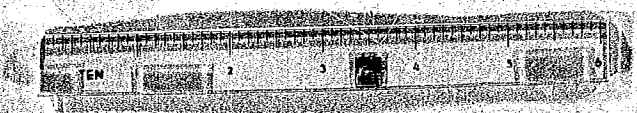


310 ST. James Tr. 12-13-18-50
and recorded in Vol. 2 of Plat. 139
in
S. C. STATE ROAD
Register Agents' Commission Greenville County, S. C.

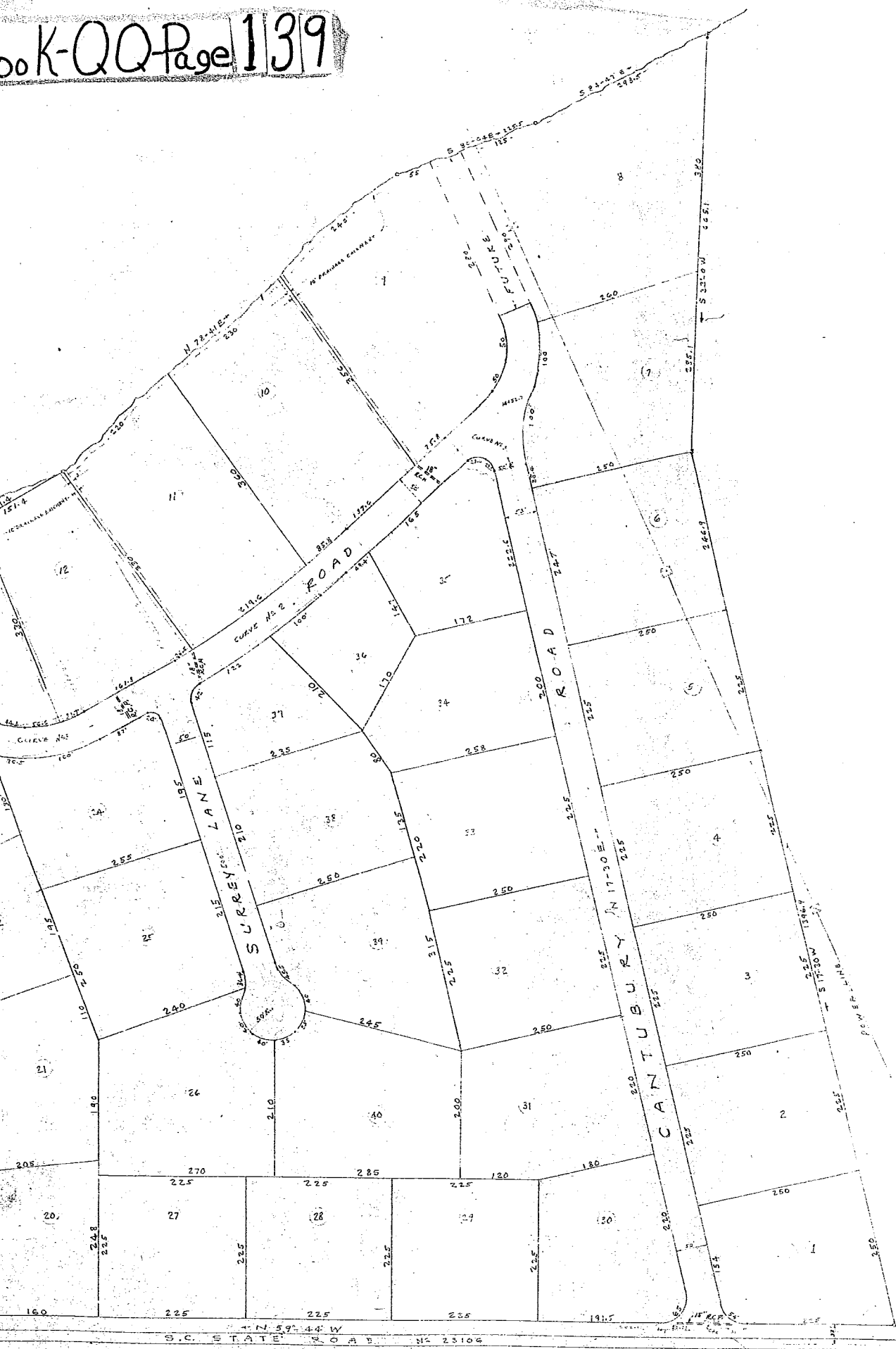


FILED
GREENVILLE CO. S. C.
MAY 13 10 45 AM 1950
GILLIE H. GIBBS, CLERK
S. C. STATE ROAD

200-139
MAY 13 1950
31097



PRELIMINARY PLAT
HEATHWILDE
PROPERTY OF W.M.R.
GREENVILLE C.
SCALE 1:100 MAY



CURVE DATA	
CURVE NO. 1	50' RAD.
CURVE NO. 2	
A	13.21
B	4.00 A
T	10'
CURVE NO. 3	
A	14.22
B	14.22 B
T	20'
CURVE NO. 4	
A	30.11
B	30.11 B
T	10'
CURVE NO. 5	
A	15.64
B	15.64 B
T	15'
CURVE NO. 6	
A	6.32
B	6.32 L
T	50'
CURVE NO. 7	
A	7.76
B	7.76 B
T	70'
CURVE NO. 8	
A	18.77
B	18.77 B
T	70'
CURVE NO. 9	
A	6.32
B	6.32
T	50'

KENNETH GREEN

PRELIMINARY PLAT
 HEATHWILDE
 PROPERTY OF WMR. WYATT
 GREENVILLE CO.
 SCALE 1"=100' MAY 1920