

Recorded in Book 26-40 Page 2
Book 26-40 Page 2
Recorded in Book 26-40 Page 2
Book 26-40 Page 2
Recorded in Book 26-40 Page 2
Book 26-40 Page 2

NOTE —
• CONC. MON.
THERE IS A 10' DRAINAGE & UTILITY
EASEMENT ALONG ALL SIDE & REAR
LOT LINES.

THIS IS TO CERTIFY THAT I OWN THIS PROPERTY
AND DO APPROVE OF THE SUBDIVISION AS SHOWN.
*Robert H. Stone and
S. E. Stone*
Robert H. Stone Jr., Executor
THO STONE PLAZA
GREENVILLE, S.C.

LOTS 2-32 PHASE 1
LOTS 33-57 PHASE 2
I CERTIFY THE ABOVE PLAT IS CORRECT
Robert H. Stone
REG. ENGR. & L.S.

APPROVED
CITY OF GREENVILLE
DATE: *3/16/62*
City Engineer
CITY ENGINEER

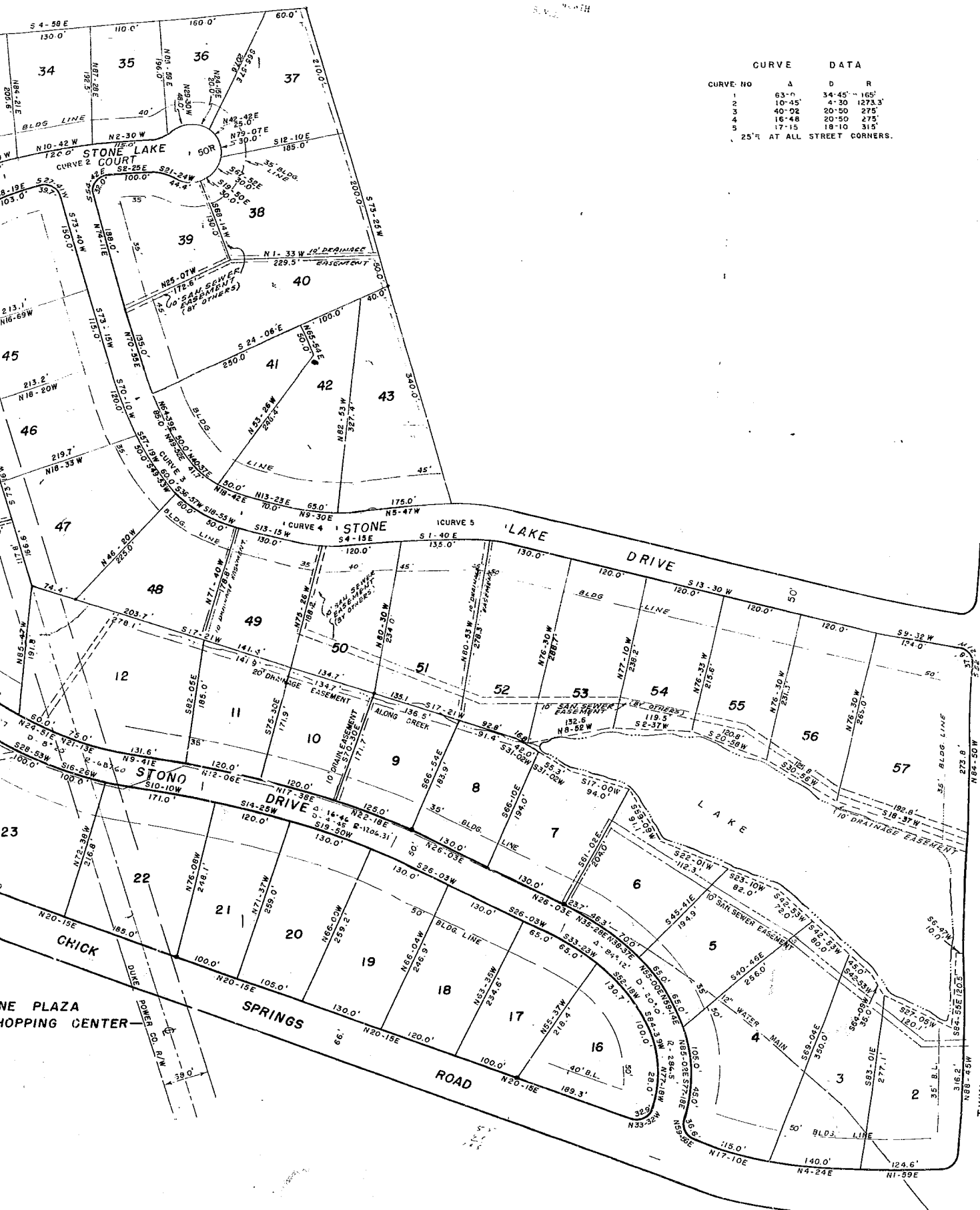
SECTION THREE
STONE LAKE HEIGHTS
GREENVILLE, S.C.

SCALE: 1" = 100'

REV. 5-26-61
1 OCTOBER 1958

Door to Page 16

MAR 16 12 38 PM '62



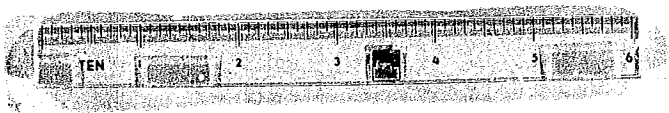
CURVE DATA

CURVE NO	A	D	R
1	63'-0"	34'-45"	165'
2	10'-45"	4'-30"	1273.3'
3	40'-02"	20'-50"	275'
4	16'-48"	20'-50"	275'
5	17'-15"	18'-10"	315'

25' AT ALL STREET CORNERS.

THREE
E HEIGHTS
LE, S.C.

REV. 5-26-61
1 OCTOBER 1958



66-96 MAR 16 1962

22852