

U. S. HIGHWAY No. 29

BUNCOMBE ROAD

P. & N. RAILROAD

CHICK SPRINGS ROAD

24' STREET

SOLD

8.8 ACRES

5.2 ACRES

SOLD

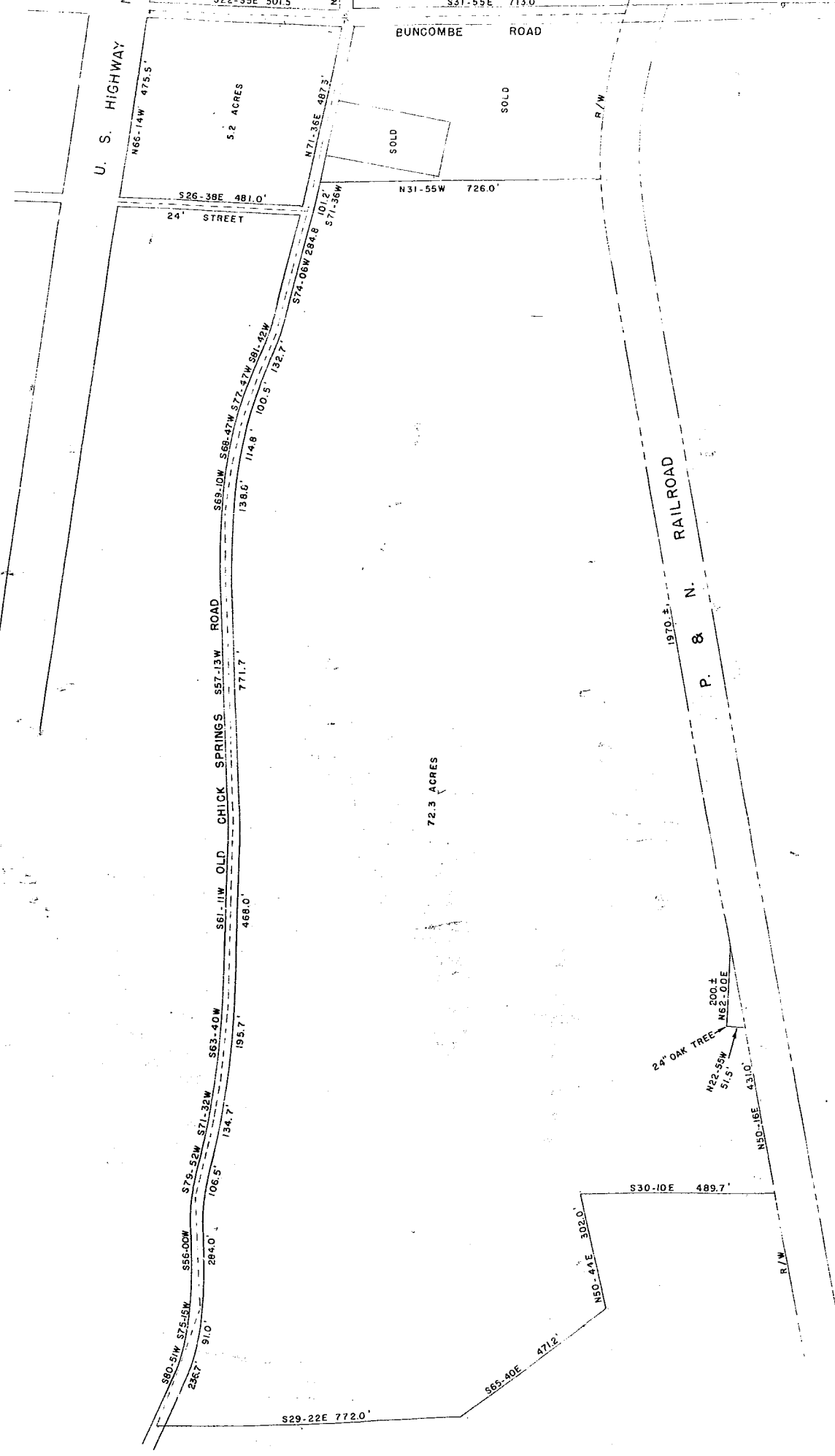
17.9 ACRES

72.3 ACRES

PROPERTY OF
 C. L. KING, EST
 SCALE: 1" = 200'

1959
 1716

WJ Book-Page 17A



PROPERTY OF
C. L. KING, EST
SCALE: 1" = 200'

NOV 1959
17135

REC'D
NOV 19 1959
17135