

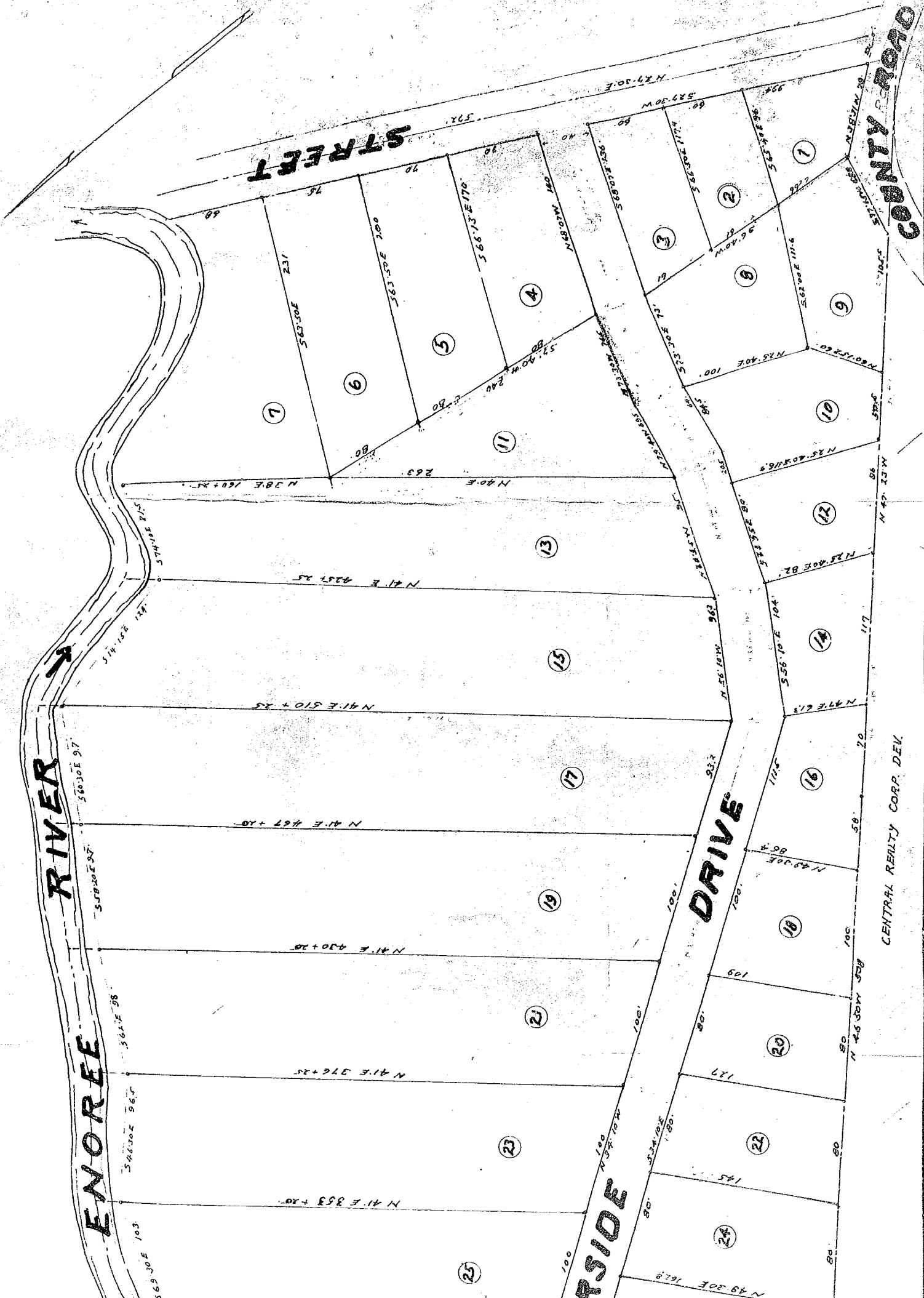
RIVER

ENOREE

STREET

DRIVE

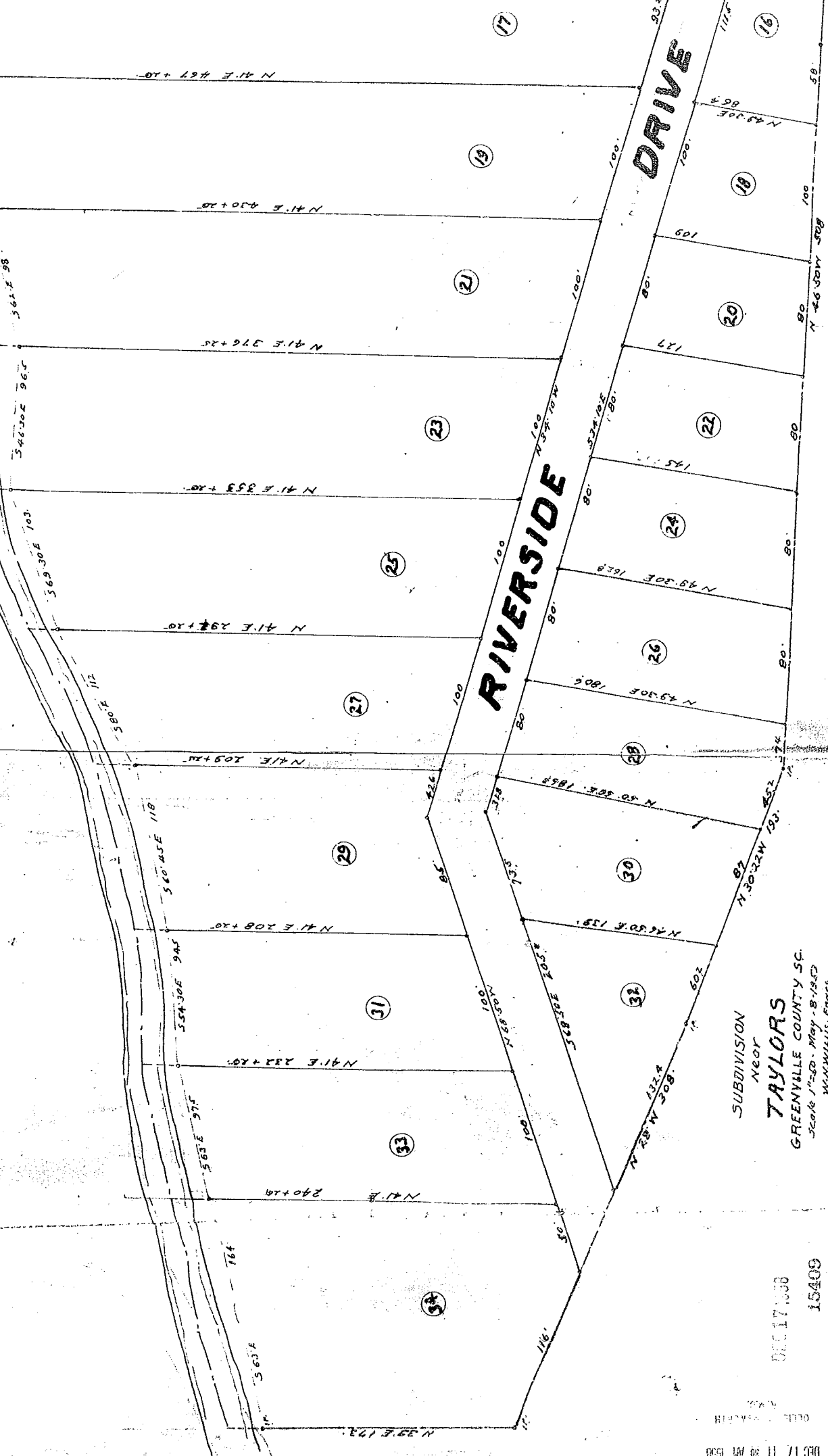
COUNTY ROAD



CENTRAL REALTY CORP. DEV.

RIVERSIDE PARK

ENOREE RIVER



CENTRAL REALTY CORP. D

SUBDIVISION
Near
TAYLORS
GREENVILLE COUNTY SC.
Scale 1"=50'. May - 8/1950
MINNIE W. EGGE
Spartanburg, S.C.
HALE & HOLTON, AGTS.

DEC 17 1950
15400

FILED
GREENVILLE COUNTY S.C.
DEC 17 11 39 AM 1950
DEPT. OF RECORDS

2.00 - (water in)