

J. V. SMITH ESTATE

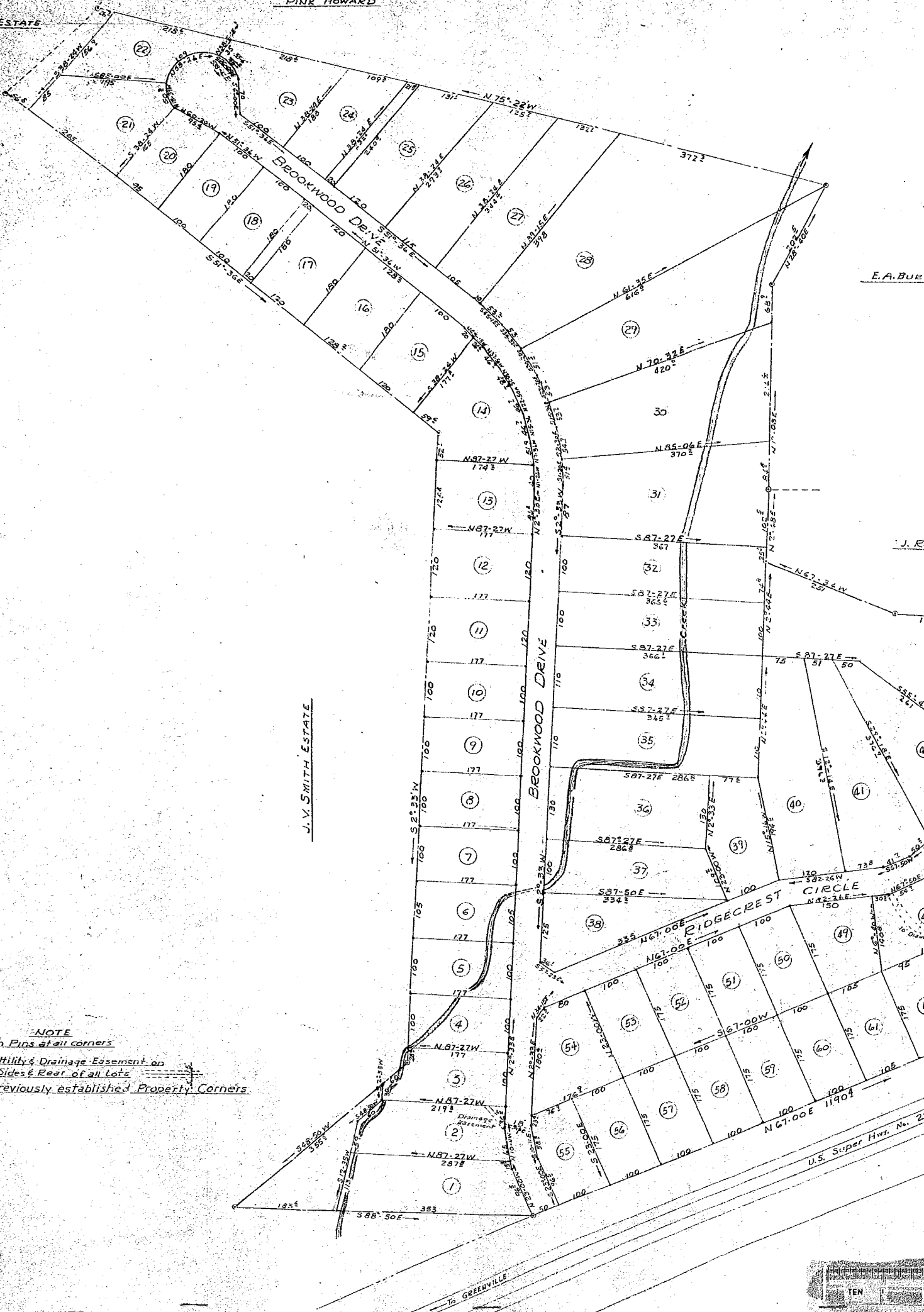
PINK HOWARD

E. A. BUR...

J. Ro...

J. V. SMITH ESTATE

NOTE
 Iron Pins at all corners
 5' Utility & Drainage Easement on
 Sides & Rear of all Lots
 o Previously established Property Corners



U.S. Super Hwt. No. 25

To GREENVILLE





PLAT OF
BROOKWOOD
GREER, S.C.

Scale 1"=100' Dated Oct. 14, 1958
Surveyed by: B.B. Waters Jr. N:1098

New Plat 5/31/65 JUN 1 1965
Cl on recording date 33516
D.D - 20 250

LLOYD HUNT

FILED
REGISTERED
JUN 1 10 44 AM 1965
DEPT. OF REVENUE
COLUMBIA, S.C.

33516 Filed in City of Greer, S.C. 19 58
And Recorded in Vol. 1098 Page 20
Register Means Conveyance Greenville County, S.C.

