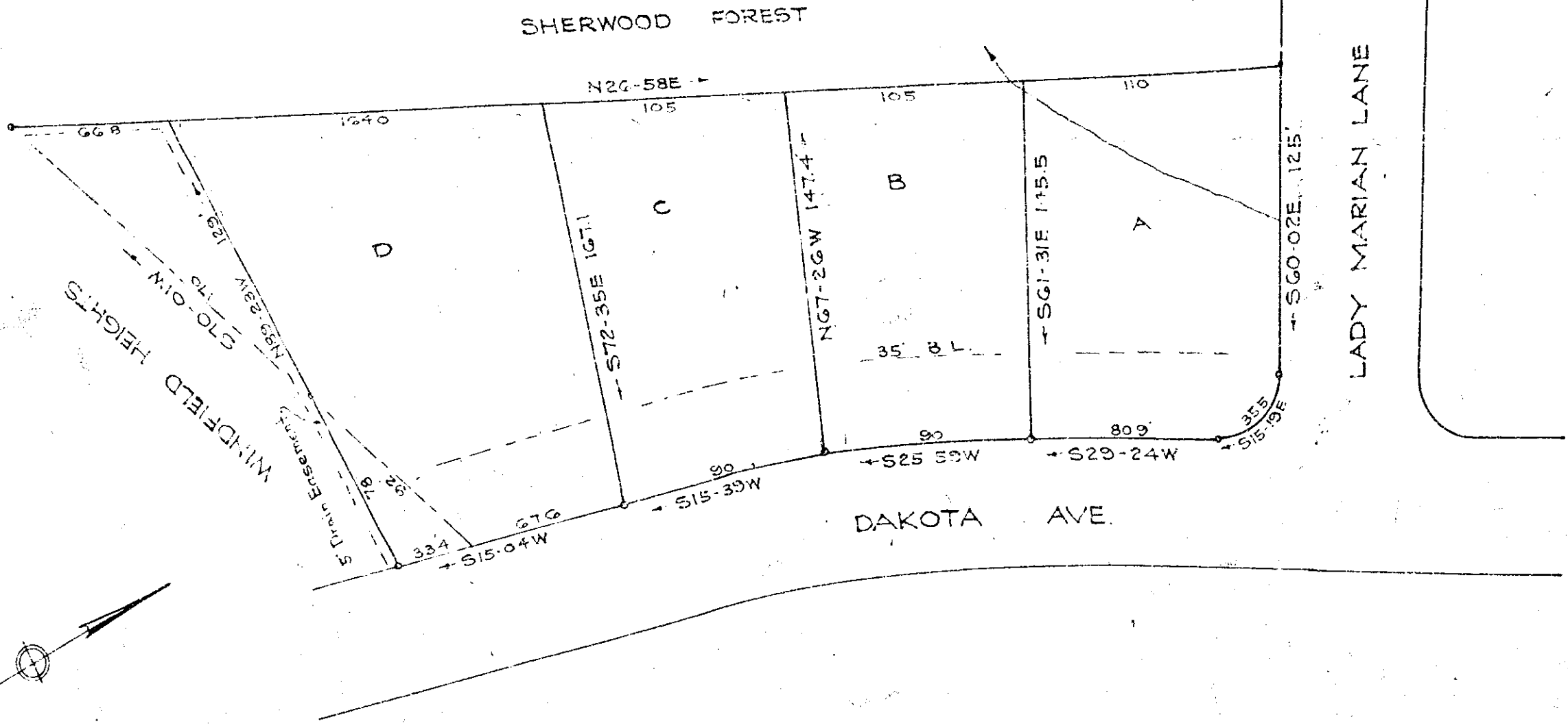


Plat Book-QQ-Page 116B

16



REVISED PORTION OF
 SHERWOOD FOREST & WINDFIELD HEIGHTS
 NEAR GREENVILLE S. C.
 Scale 1"=50' Oct. 1959

GREENVILLE CO. S. C.
 REC'D
 NOV 15 3 44 PM 1959
 DILLIE T. ANDERSON
 R. M. COOK

22-16

DALTON & NEVES

NOV 12 1959

14470

Iron Pins at all Corners

332

14470 filed this 13th day of Nov. 1959
 A. W. Incorporated in S. C. - 16
 Cassie E. Annis
 Register of Deeds, Greenville County, S. C.

