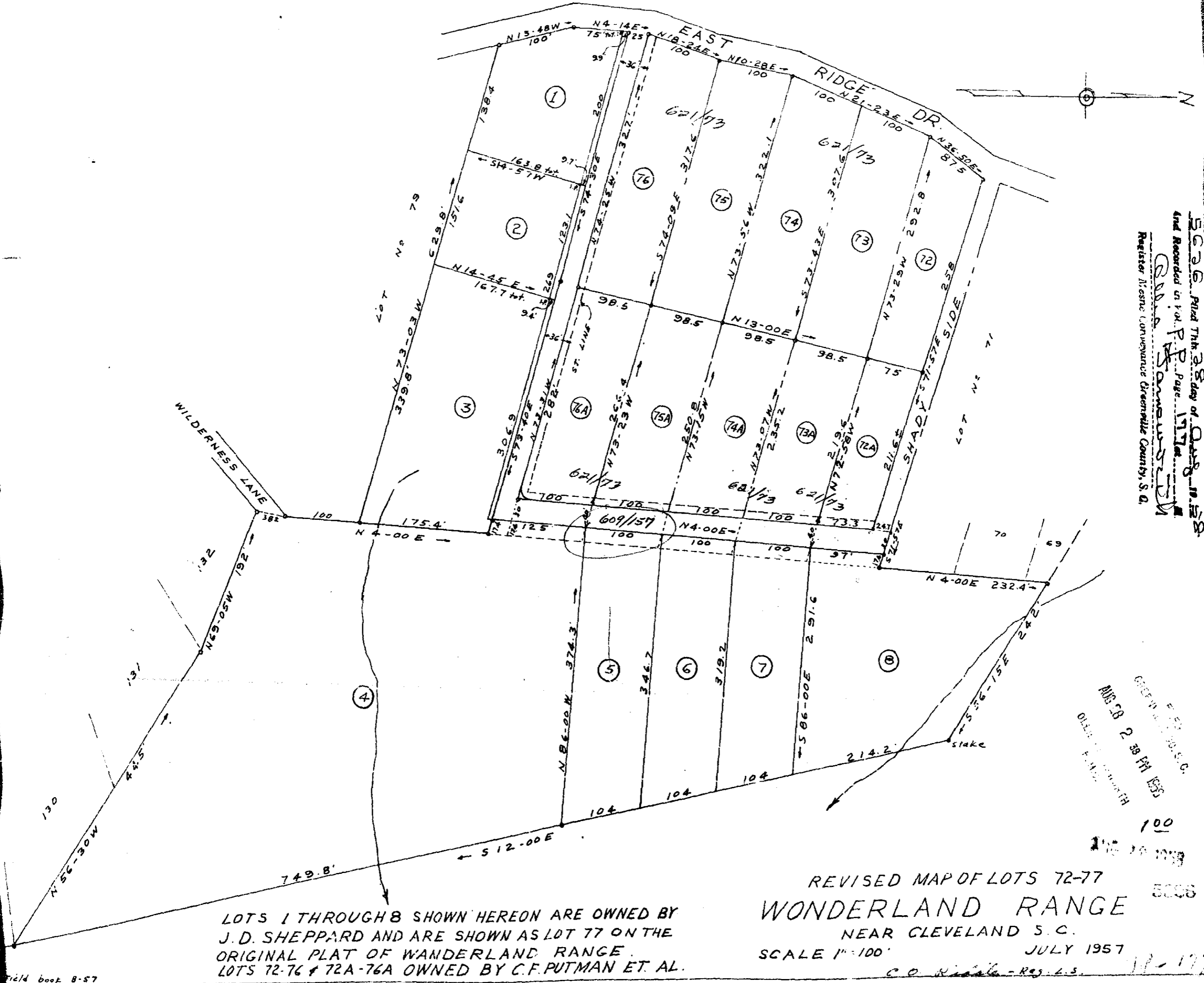


Plat Book PP, Page 177



LOTS 1 THROUGH 8 SHOWN HEREON ARE OWNED BY J. D. SHEPPARD AND ARE SHOWN AS LOT 77 ON THE ORIGINAL PLAT OF WANDERLAND RANGE. LOTS 72-76 & 72A-76A OWNED BY C. F. PUTMAN ET AL.

REVISED MAP OF LOTS 72-77
 WONDERLAND RANGE
 NEAR CLEVELAND S. C.
 SCALE 1"=100'
 JULY 1957
 C. O. ... - Reg. L.S.

5626 Plat Thru 38 day of Aug 1958
 and Recorded in P.P. Page 177
 Register Office (Conveyance Greenville County, S. C.)

MAR 20 2 38 PM 1958
 DEPT. OF REVENUE
 CLEVELAND, S. C.