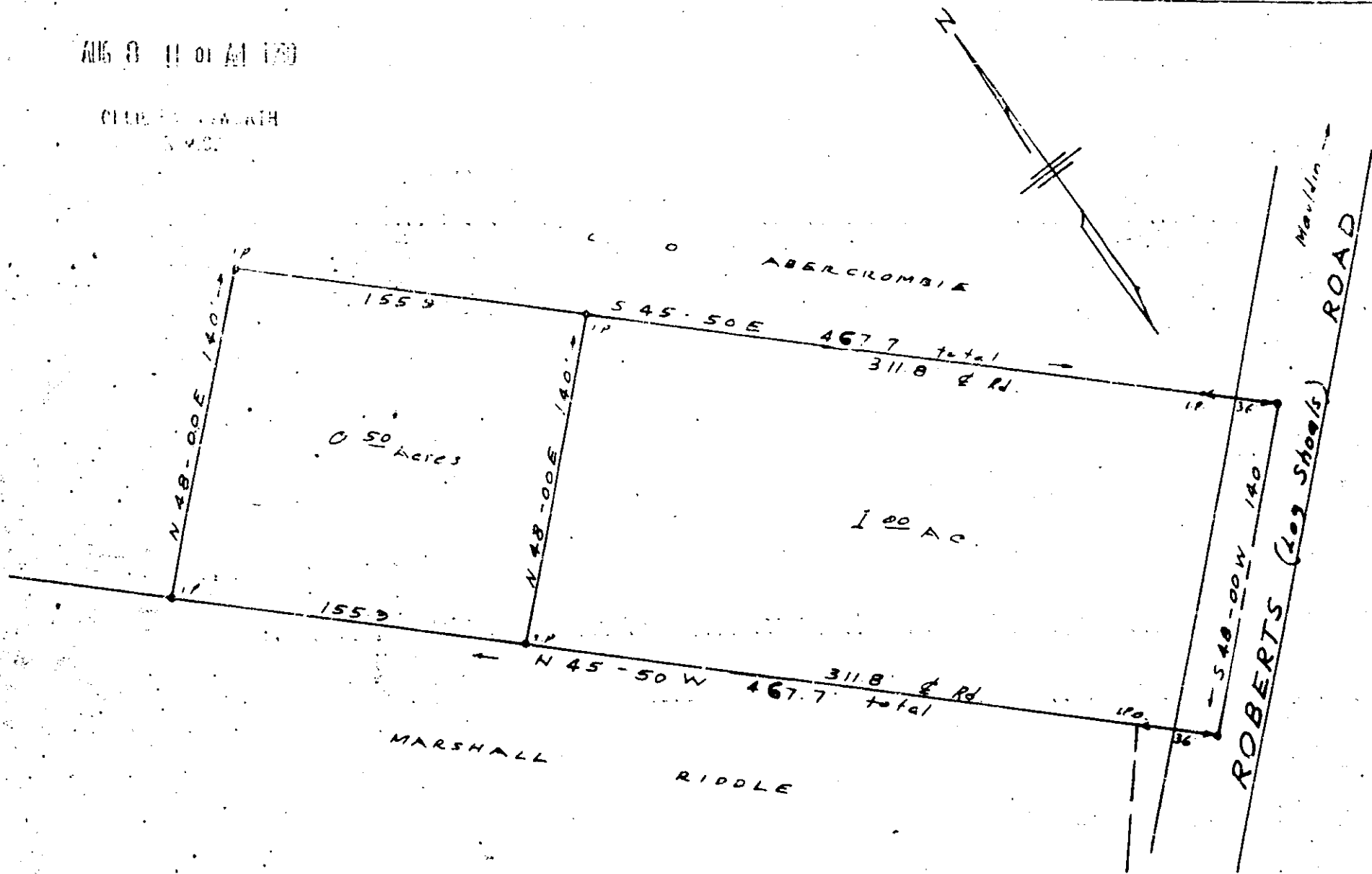


Plat Book 00, Page 506

11-25

AUG 8 11 01 AM 1960

CLERK OF COURTH
S.C.



Recorded August 8, 1950 at 11:01 A. M. #3971

AUG 8 1960

NOTE: 0.50 acre tract surveyed and plat recorded 6/24/60.

To - Stanley M. + Agnes A

De. Will

PROPERTY OF
From - C. O. ABERCROMBIE

NEAR MAULDIN S. C.
SCALE 1" = 60' AUG. 21, 1957

3971

C. O. Riddle - Reg. 45