

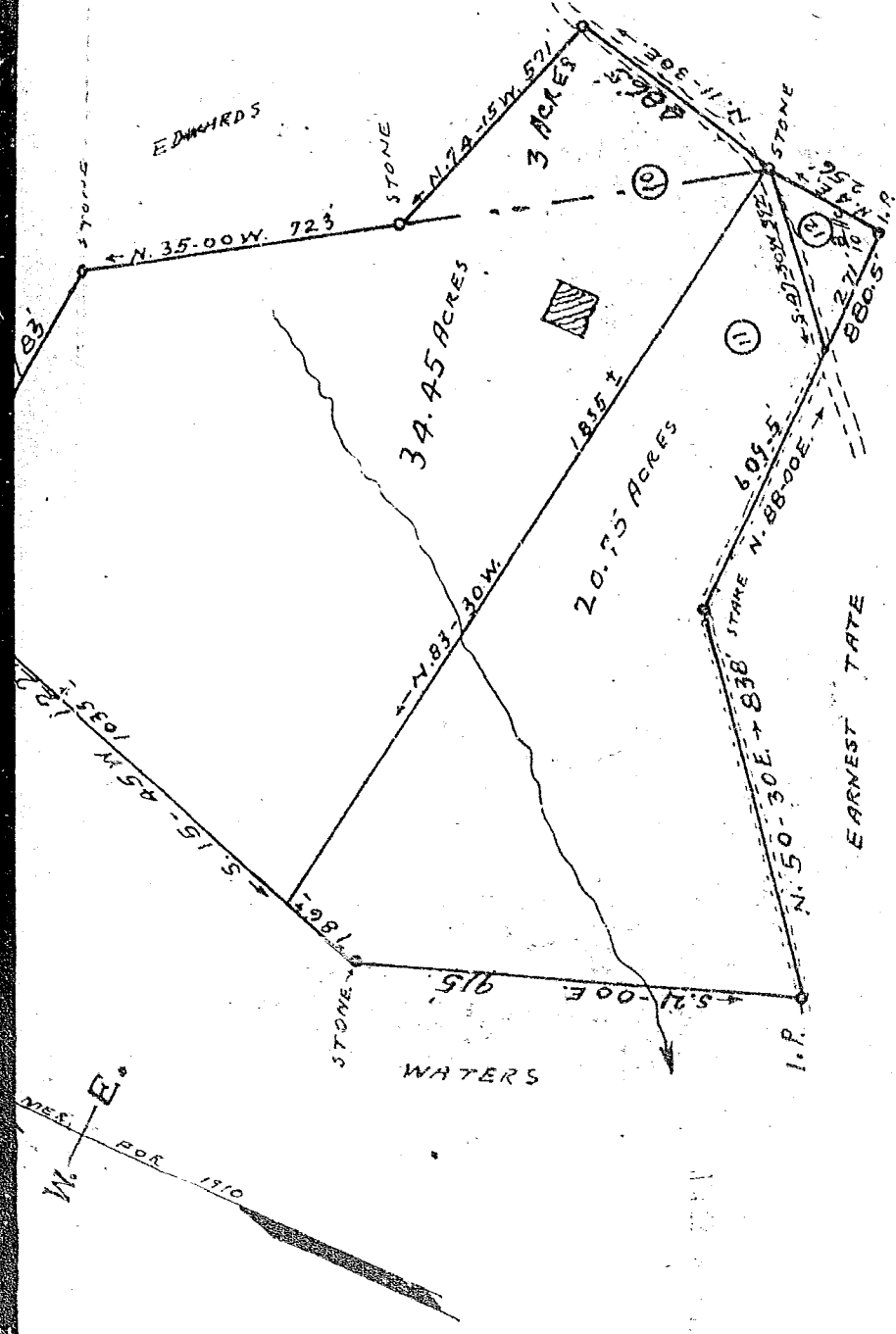
PROPERTY OF
F. W. ANDREA

ONE HALF MILE SOUTHEAST FROM DOUBLE SPRINGS
 REAL TOWNSHIP GREENVILLE COUNTY
 SOUTH CAROLINA

SCALE: 1" = 300 FEET NOVEMBER 7 1946

BOUNDARY LINES FOR LOTS 1 TO 9 WERE TAKEN FROM PLAT BY
 J. NEVES, MARCH 17 1910. LOTS 10, 11 & 12 FROM PLAT
 A. G. TAYLOR, AUG. 12 1913. DIVIDING LINES WERE
 SURVEYED BY ME OCTOBER 30 1946.

H. S. BROCKMAN, SURVEYOR,
 GREER, S. C.



APR 22 1959

2.00 - picture