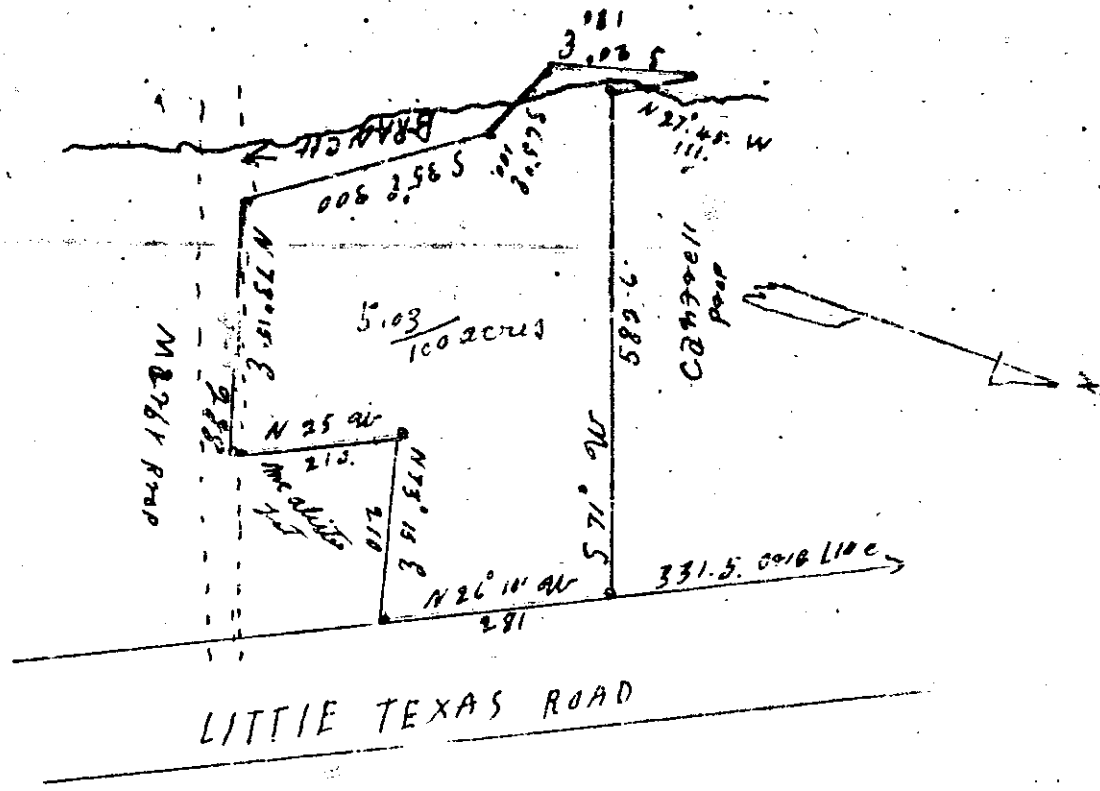


*Brown*  
 FILED  
 GREENVILLE CO. S. C.  
 DEC 11 9 41 AM 1958  
 CLYDE T. WORTH  
 R. M. O.

Survey Station  
 End Arrow



South Carolina Greenville County 11/25/1968  
 The above plat was drawn from data by J. C. Hill  
 plat 17 - line on the branch surveyed and plotted  
 by H. J. Corn Surveyor  
 Scale 1" = 200 feet