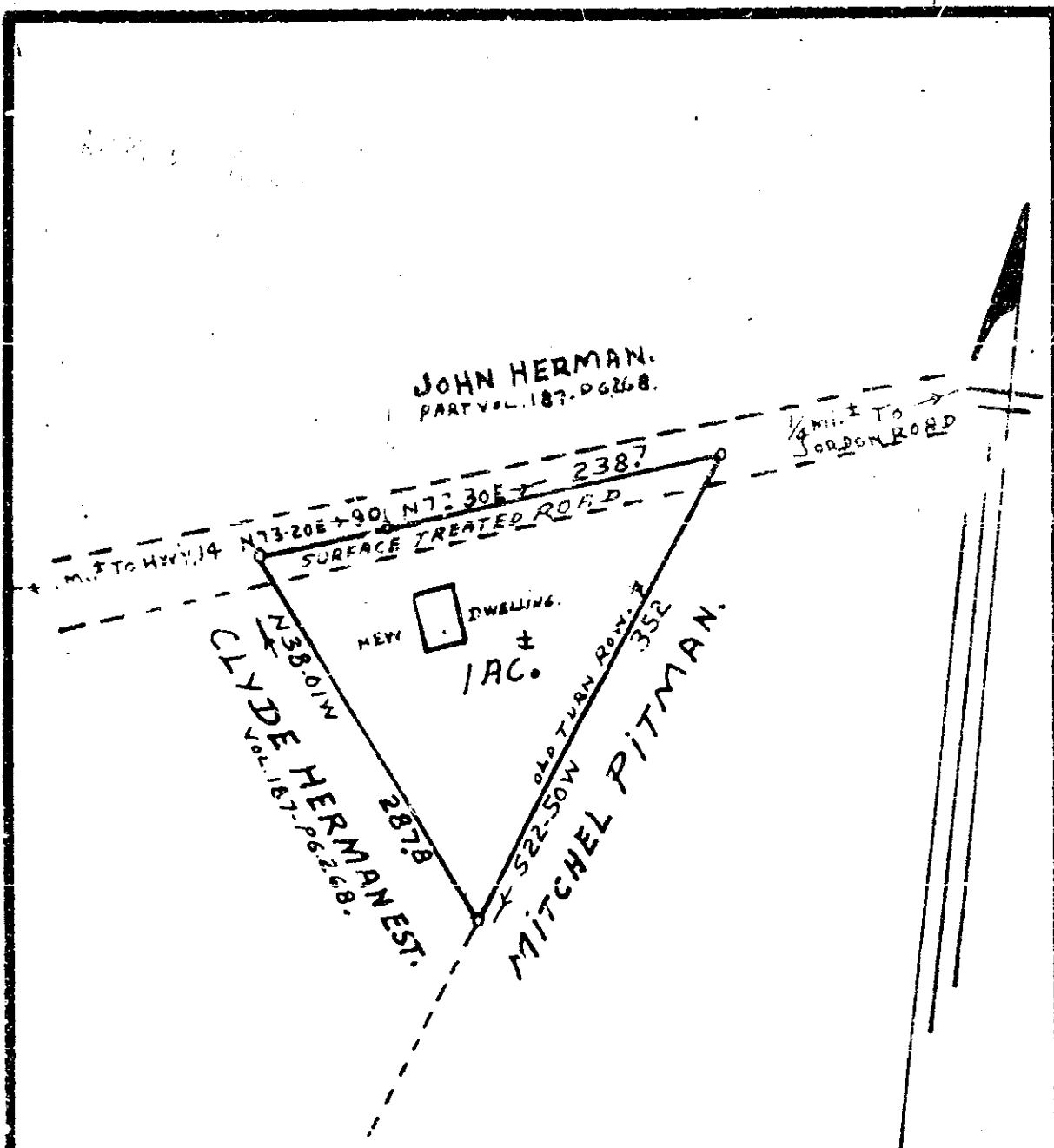


9-1-216



PLAT OF LAND FOR
W. H. HERMAN: G'VILLE CO. S.C.
 LOCATED ABOUT 1/2 MI. N.W. OF JORDON.
 BEING PART OF VOL. 187-PG. 268.
 PLATTED FROM DEED, AND GROUND INSPECTION.
 8-23-1958. NOT SURVEYED. 1 1/2" = 100'

J. Q. BRUCE,
 REG. SUR. S.C. # 667,
 R-2 CAMPOBELLO, S.C.