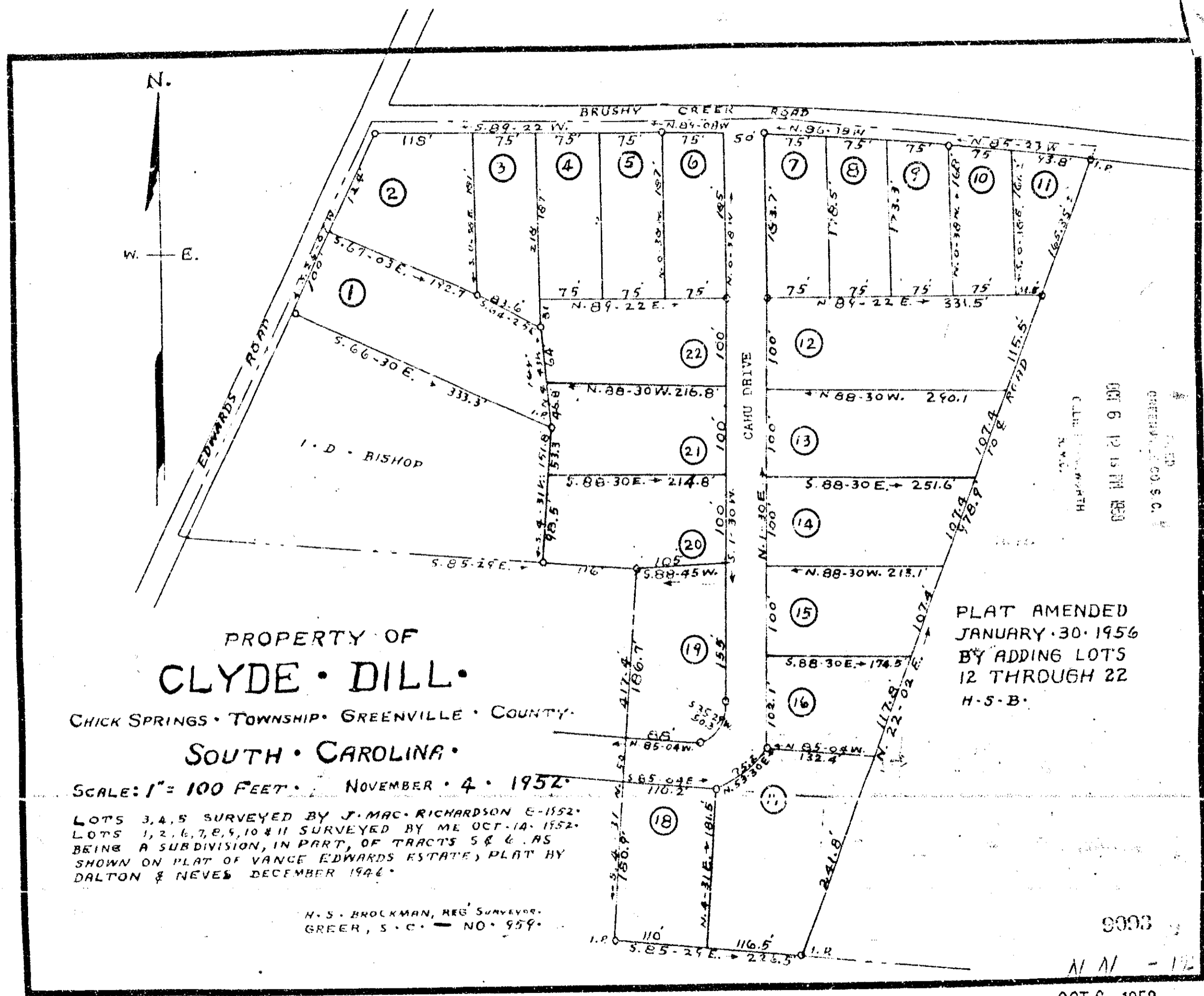


# Plat Book-NN-Page 192



PROPERTY OF  
**CLYDE • DILL •**

CHICK SPRINGS • TOWNSHIP • GREENVILLE • COUNTY •  
**SOUTH • CAROLINA •**

SCALE: 1" = 100 FEET • NOVEMBER • 4 • 1952 •

LOTS 3, 4, 5 SURVEYED BY J. MAC RICHARDSON E-1152 •  
LOTS 1, 2, 6, 7, 8, 9, 10 & 11 SURVEYED BY ME OCT. 14, 1952 •  
BEING A SUBDIVISION, IN PART, OF TRACTS 5 & 6 AS  
SHOWN ON PLAT OF VANCE EDWARDS ESTATE, PLAT BY  
DALTON & NEVES DECEMBER 1944 •

H. S. BROCKMAN, REG. SURVEYOR •  
GREER, S. C. — NO. 959 •

PLAT AMENDED  
JANUARY 30 1956  
BY ADDING LOTS  
12 THROUGH 22  
H-S-B •

9093

NN - 172

OCT 6 1958

9093 ... Plat NN ... Oct 10 55  
and ... NN ... 1952

*Bevia Newsome*  
Register Meade Conveyance Greenville County, S. C.