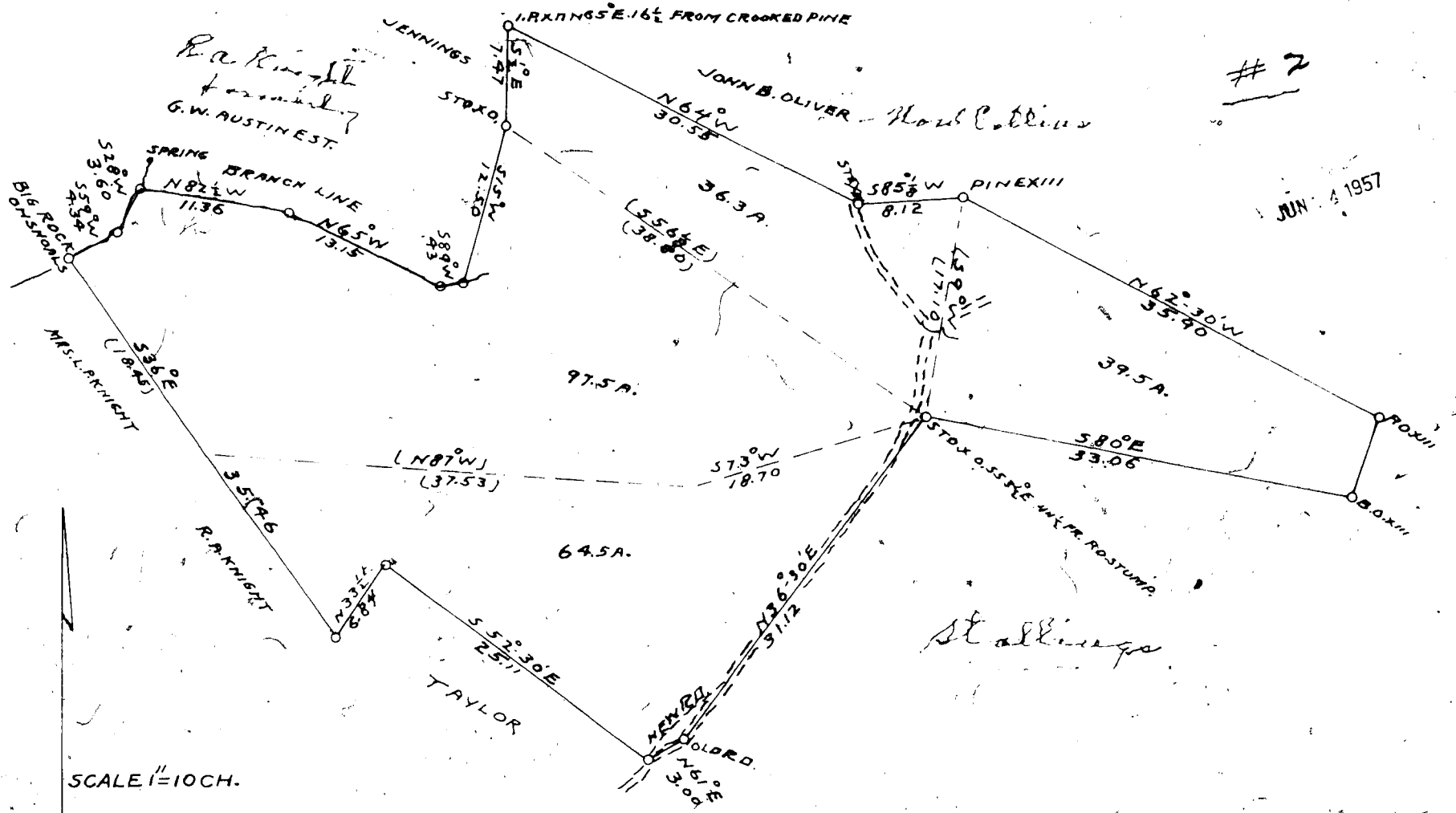


2

JUN 4 1957



Application 184258
R. A. Knight

SCALE 1"=10CH.

R. A. KNIGHT COMPOSITE PLAT OF 237.8 ACRES
 JAS. B. WILLIS PLAT, DEC. 19, 1898 OF 39.5A.
 W. L. MITCHELL PLAT, OCT. 20, 1916 OF 36.3A.
 J. H. GAINES PLAT, NOV. 1, 1899 OF 97.5A.
 FROM ADJOINING PLATS & DEED FOR 64.5A.
 GREENVILLE COUNTY, S. C.
 COMBINED & PLAT MADE MAY 18, 1957 BY J. R. CRAWFORD, L.S.

13970 filed this 11 day of June 1957
 and Recorded in Vol. N.W. Page 93
 GABRIEL S. GAINES
 Register Mease Conveyance Greenville County, S. C.

BAD COPY