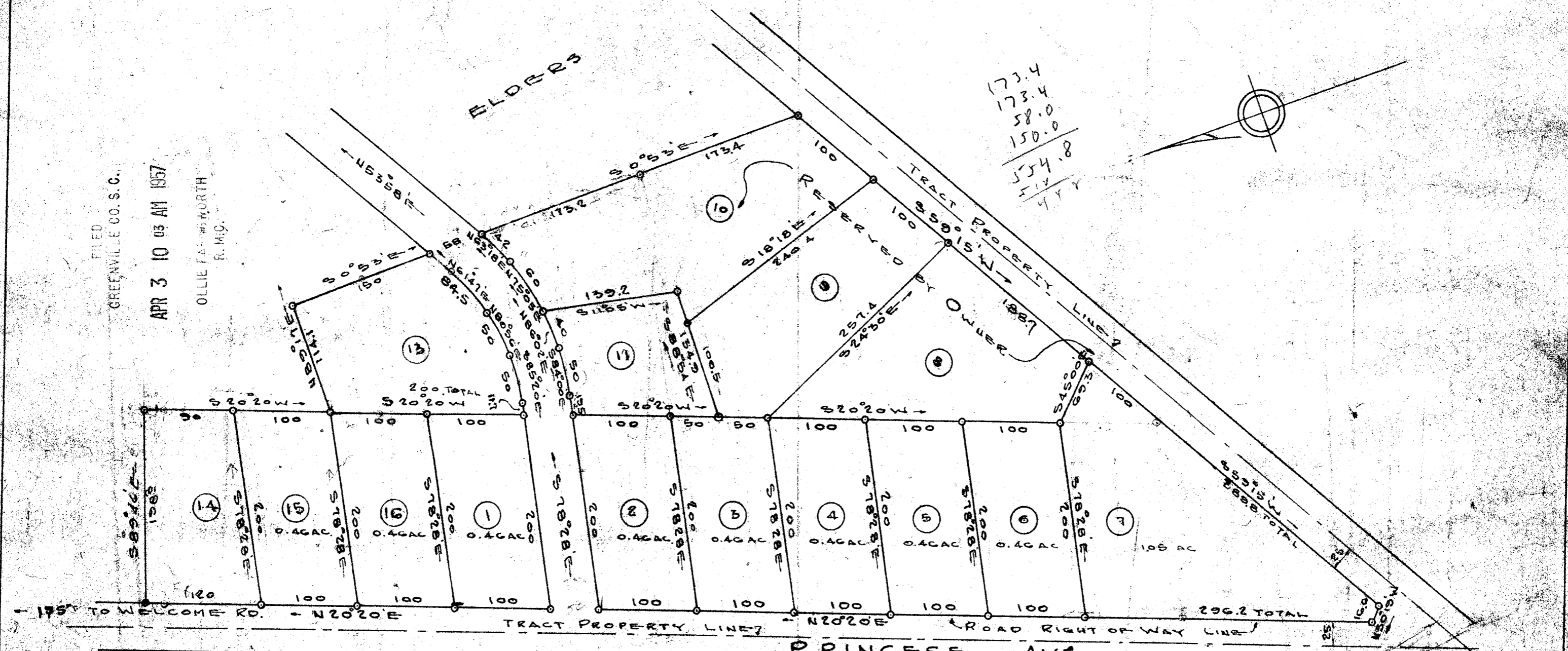


FILED
GREENVILLE CO. S. C.
APR 3 10 03 AM 1957
OLLIE F. FARMWORTH
R. M. C.



NOTE: LOTS 11, 13, & 14 BY C. C. JONES & ASSOCIATES ENGRS.
 SEE PLAT BY PICKELL & PICKELL ENGRS FOR
 ORIGINAL SUBDIVISION SURVEY, MARCH 24, 1954, ALSO SEE
 REVISED PLATS OF SUBDIVISION BY PICKELL & PICKELL
 ENGRS APRIL 12, 1954 & AUG. 22, 1955.

TOM W. TUCKER
 AND
ELSIE TUCKER
 HEAR
GREENVILLE, S. C.

SCALE: 1"=100 OCT. 12, 1955

C. C. JONES & ASSOCIATES
 ENGINEERS
 GREENVILLE, S. C.

Paste in
100

ADD 3-1957
7985

NN-33

NOTE: IRON PIPE AT ALL CORNERS

7985 Filed This 3 day of April 1957
 and Recorded in Vol. NN Page 33
 Ollie F. Farmworth
 Register Meane Conveyance Greenville County, S. C.

4 copies