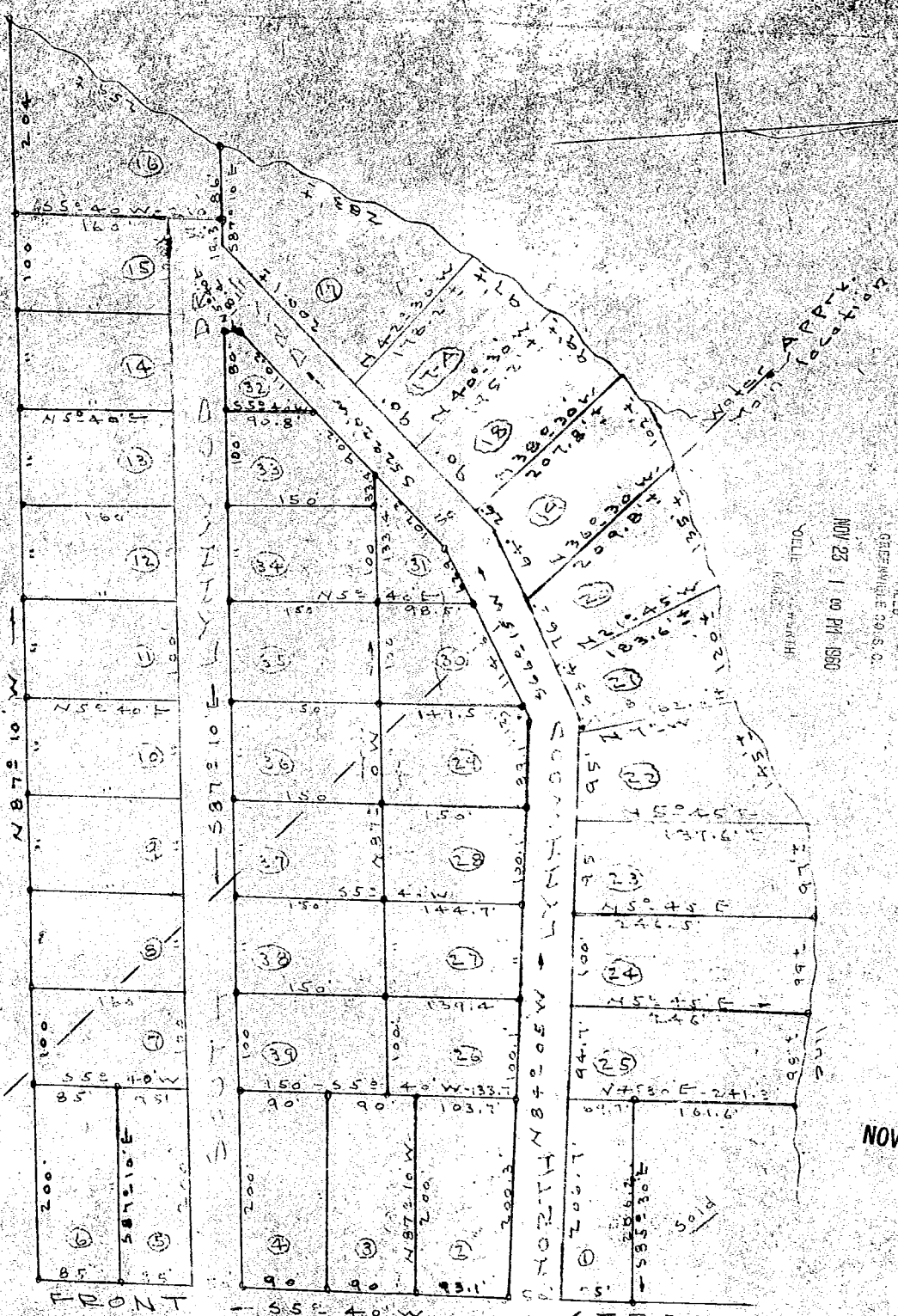


BAD COPY

Plat Book - M M - Page 181



FILED
 GREENVILLE S. C.
 NOV 23 1 00 PM 1960
 TOLLE
 HALL

NOV 23 1960
 13521

LEHMAN ADWELL MOSELEY, JR.
 ATTORNEY AT LAW
 TRAVELERS REST, S. C.

PB "M M"
 Page 181

LAUREL FOREST
 Near Rentree's Co. Greenville S.C.
 1500 - 1500 - 1500 - 1500 - 1500
 1500 - 1500 - 1500 - 1500 - 1500
 1500 - 1500 - 1500 - 1500 - 1500

13521 added this day of Nov 1960
 and recorded in Vol. M M Page 181
 Registrar of Deeds Greenville County S.C.

See also Plat 20195

B. Magnetic Bearings
 J. G. Hill, S. C.