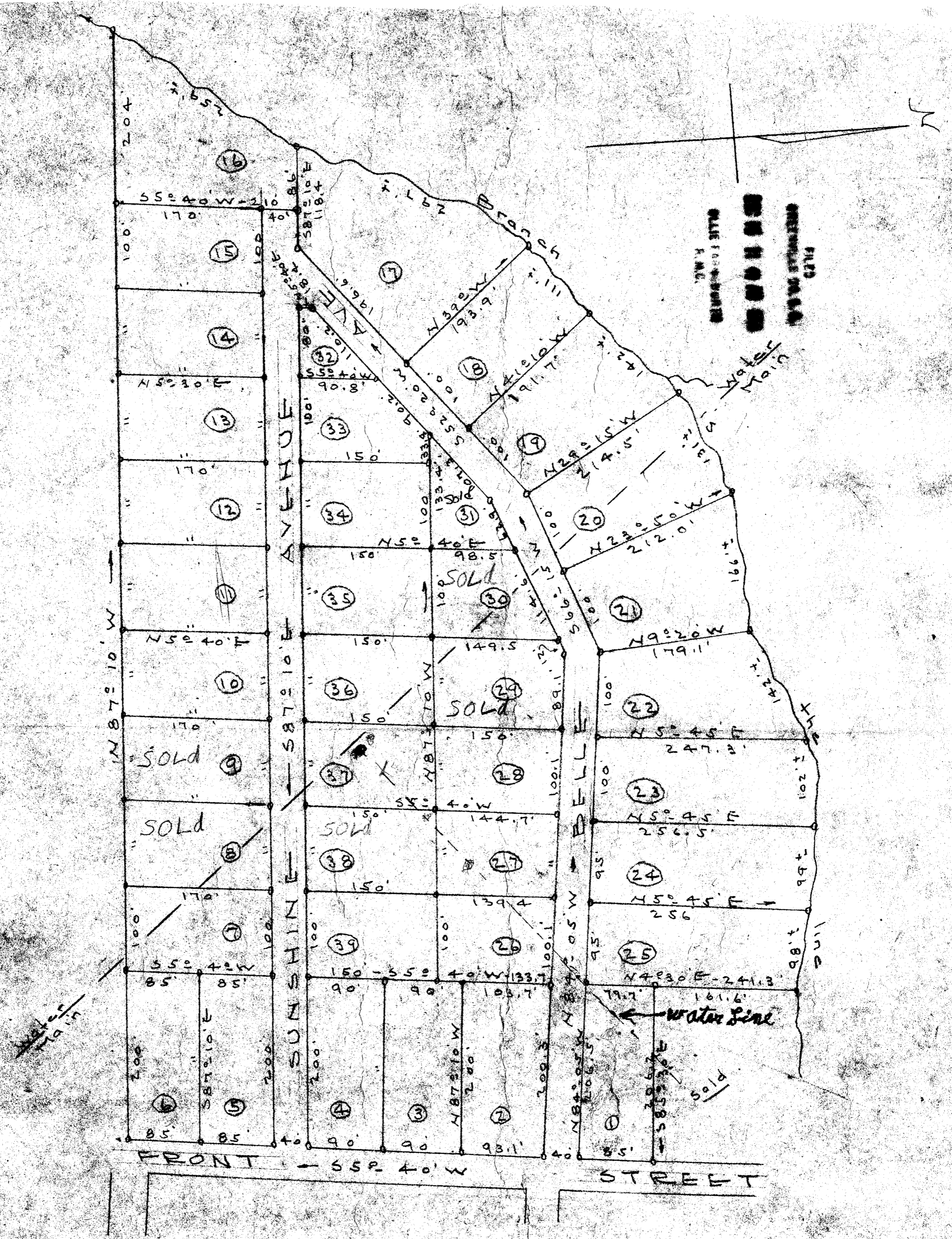


15135  
 W M G I  
 Dec. 58  
 J. C. Hill



SHOWING  
 CLARK SUB-DIVISION  
 Near Centraw. So. Cal.  
 Scale 1" = 100' - Jan. 5, 1951

151958  
 15135

MM-61  
 150  
 J.C. Hill - L.S. 805

NOTE: ALL CORNERS  
 FROM PINS OF ALL CORNERS  
 ALL BEARINGS ARE MAGNETIC

Paste in 150