

# Plat Book-MM-Page 8



PROPERTY OF

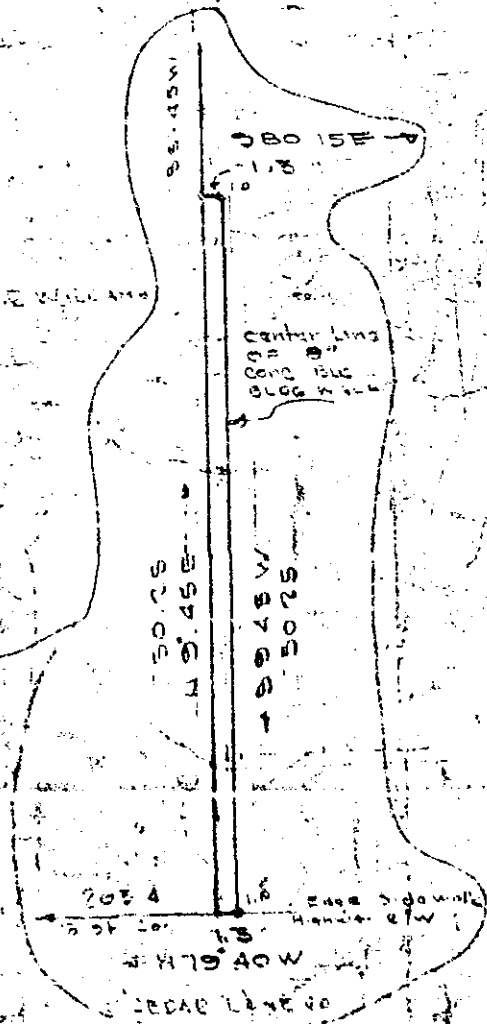
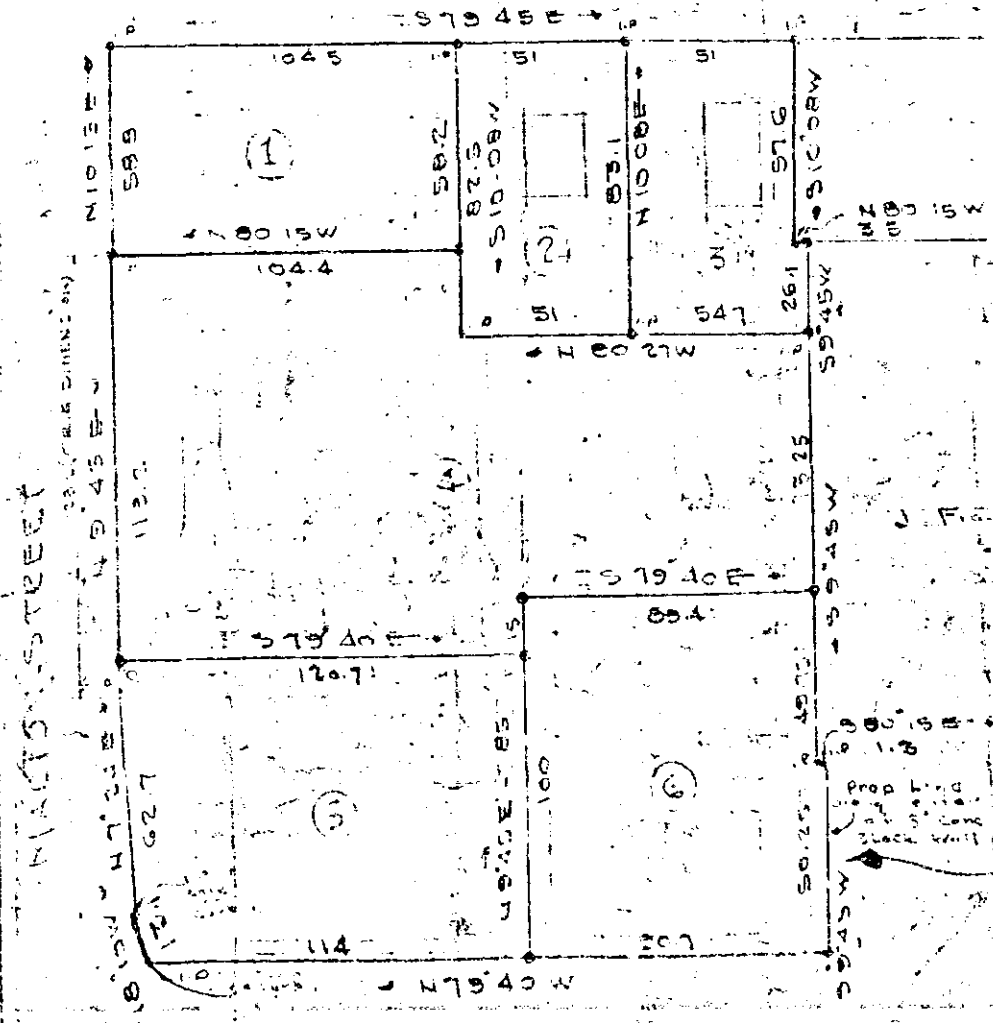
AILEE G. BOYD  
GREENVILLE, S.C.

SCALE 1" = 40' MAR 16 1954  
JAN 8 1955 Corrected  
(4-9-6)

REVISED JAN 7 1954 - DISTANCE ALONG MARION STREET FROM CORNER OF LOTS 445 TO CORNER OF LOTS 114 REVISED TO SHOW 1132' AS ORIGINALLY INTENDED

COLONIAL AVE

**BAD COPY**



CEDAR LANE RD

PLANNING AND ZONING COMMISSION  
CITY HALL GREENVILLE, S. C.

JAN 8 1959

*Clayton - 1-8-59*

1713d

MM-8

C. C. JONES  
CIVIL ENGINEER  
GREENVILLE, S. C.

#17131 Plat Th 8 of MM 10-57  
And Recorded in 111 8

*Clayton*  
Register of Deeds Greenville County, S. C.