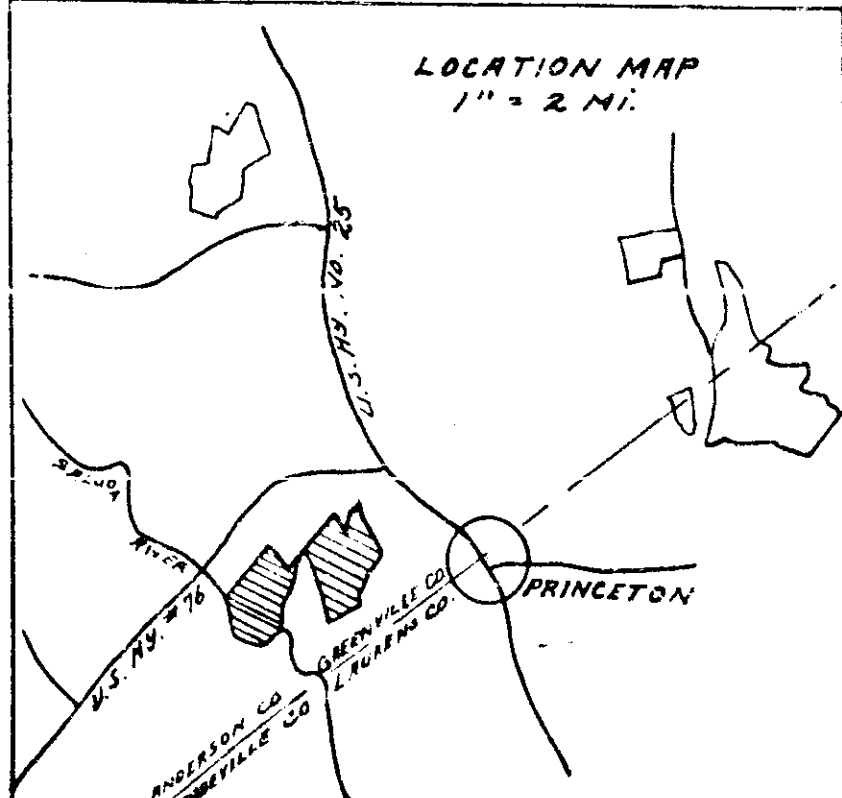
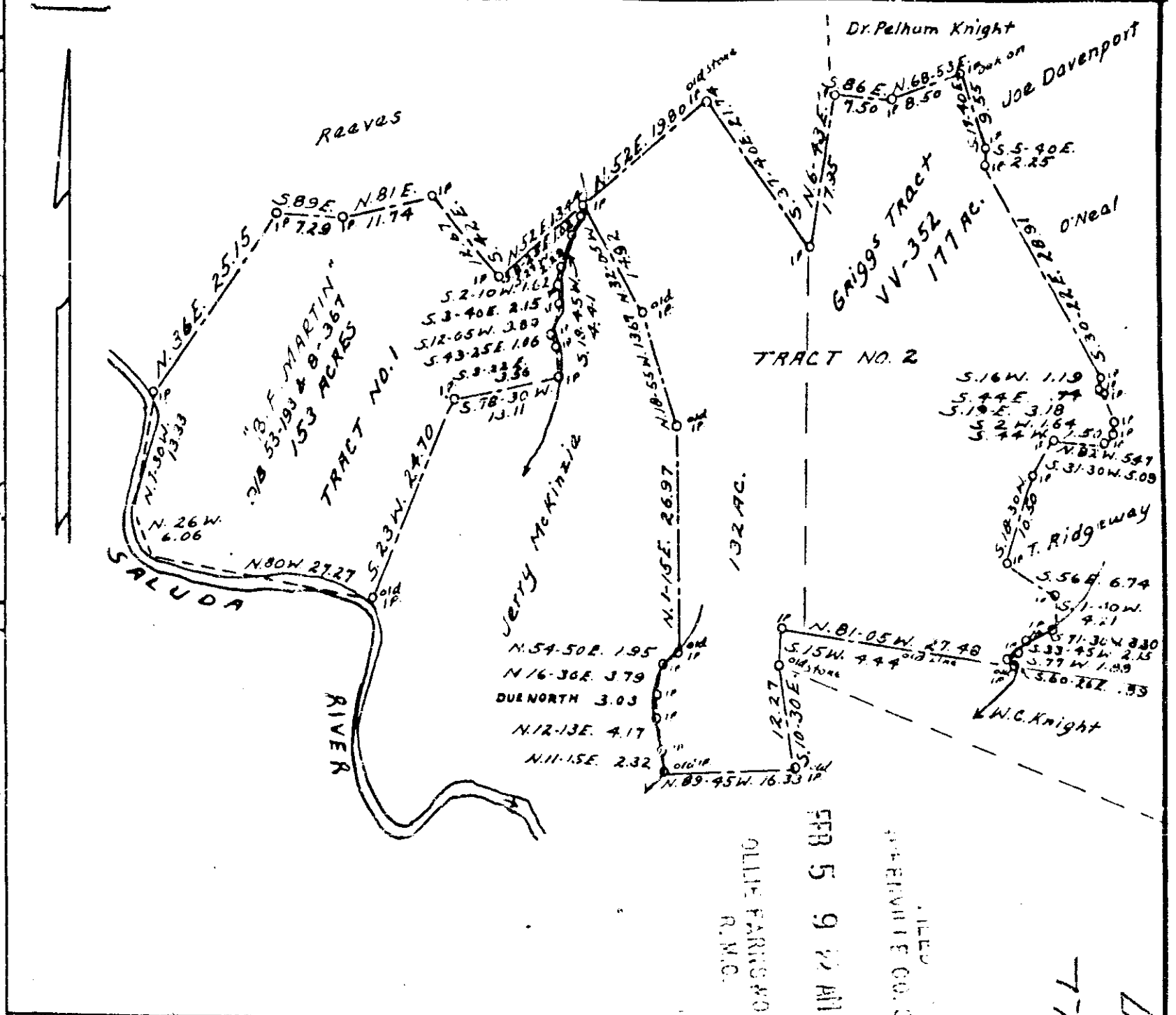


Plat Book LL, Page 177 A

| Bearing | Feet | Chains | |
|--------------------|------|--------|----------------------------|
| TRACT NO. 1 | | | |
| N. 36 E. | 1660 | 25.15 | IP East Bank SALUDA RIVER |
| S. 89 E. | 481 | 7.29 | Along to Reeves Line |
| N. 81 E. | 775 | 11.74 | |
| S. 42 E. | 835 | 12.67 | Total length 2194' |
| N. 52 E. | 887 | 13.44 | To IP Bank Branch |
| S. 8-25 E. | 67 | 1.02 | Down Branch |
| S. 27 W. | 151 | 2.29 | Jerry McKinzie Line |
| S. 18-45 W. | 291 | 4.41 | |
| S. 2-10 W. | 107 | 1.62 | |
| S. 3-40 E. | 142 | 2.15 | |
| S. 12-05 W. | 257 | 3.89 | |
| S. 43-25 E. | 70 | 1.06 | |
| S. 3-22 E. | 235 | 3.56 | |
| S. 78-30 W. | 865 | 13.11 | IP Leaving Branch |
| S. 23 W. | 1630 | 24.70 | To IP E. Bank Saluda River |
| N. 80 W. | 1800 | 27.27 | UP River. Aero Photo. |
| N. 26 W. | 400 | 6.06 | |
| N. 7-30 W. | 880 | 13.33 | To Beginning |

| Bearing | Feet | Chains | |
|--------------------|-------|--------|---|
| TRACT NO. 2 | | | |
| N. 52 E. | 1307 | 19.80 | Cor Tract No. 1 IP on Branch length of line 2194' |
| S. 37-40 E. | 1435 | 21.74 | old Stone to IP |
| N. 6-43 E. | 1185 | 17.95 | IP Reeves line |
| S. 86 E. | 495 | 7.50 | IP Dr. Pelham Knight |
| N. 68-53 E. | 561 | 8.50 | Took on |
| S. 17-40 E. | 630 | 9.55 | IP Joe Davenport line |
| S. 5-40 E. | 148.5 | 2.25 | IP |
| S. 30-22 E. | 1908 | 28.91 | IP O'Neal line |
| S. 16 W. | 78.5 | 1.19 | |
| S. 44 E. | 49 | .74 | |
| S. 19 E. | 211 | 3.18 | |
| S. 2 W. | 108 | 1.64 | |
| S. 44 W. | 99 | 1.50 | |
| N. 82 W. | 361 | 5.47 | IP T. Ridgeway line |
| S. 31-30 W. | 336 | 5.09 | |
| S. 18-30 W. | 693 | 10.50 | |
| S. 56 E. | 445 | 6.74 | |
| S. 1-40 W. | 278 | 4.21 | IP on Branch |
| S. 71-30 W. | 218 | 3.30 | Down Branch |
| S. 33-45 W. | 142 | 2.15 | |
| S. 77 W. | 124 | 1.88 | |
| S. 60-26 E. | 59 | .89 | IP on Branch |
| N. 81-05 W. | 1814 | 27.48 | IP W.C. Knight old line |
| S. 15 W. | 293 | 4.44 | To old Stone |
| S. 10-30 E. | 810 | 12.27 | To old I.P. |
| N. 83-45 W. | 1078 | 16.33 | To old I.P. Branch |
| N. 11-10 E. | 153 | 2.32 | up branch |
| N. 12-13 E. | 275 | 4.17 | " |
| DUE NORTH | 200 | 3.03 | " |
| N. 16-30 E. | 250 | 3.79 | " |
| N. 54-50 E. | 129 | 1.93 | to old I.P. |
| N. 1-15 E. | 1780 | 26.97 | to old I.P. |
| N. 18-55 W. | 902 | 13.67 | to old I.P. |
| N. 32-05 W. | 985 | 14.92 | To Beginning |



TRACT OF LAND OWNED BY
W. C. KNIGHT
 CONTAINING 462 ACRES
 NEAR
PRINCETON
 GREENVILLE CO. - S.C.
 TO BE DEEDED TO
W. VA. PULP & PAPER CO.
 SCALE 1" = 200 FT. - DEC. 20 - 1956
 W. N. WILLIS - ENGRS.
 SPARTANBURG - S.C.

FILED
 GREENVILLE CO. CLERK
 FEB 5 9 32 AM
 1957

Book - LL
 Page 177

2958 Filed This 5 day of Feb 1957
 and Recorded in Vol 58 Page 177 at
 Greenville S.C.

REGISTRAR Meshe Conover, Greenville County, S.C.