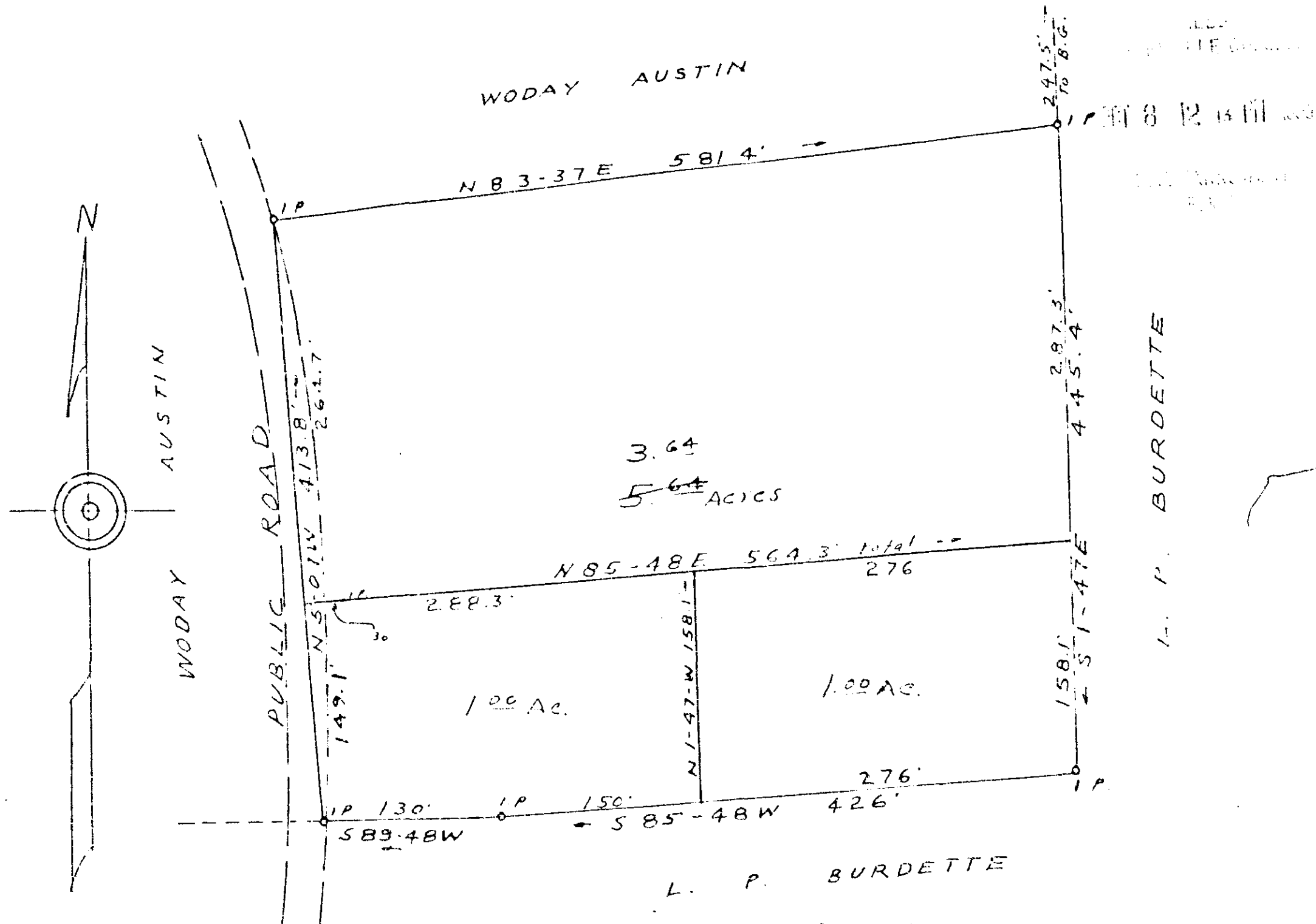


Plat Book L.L. Page 117 A



3.64
5.64 ACRES

1.00 AC.

1.00 AC.

L. P. BURDETTE

PROPERTY OF
WODAY M. AUSTIN
GREENVILLE COUNTY S.C.

SCALE 1"=100' APR. 13, 1955

Note: Plat revised 10/3/56

See 501

LL-117

1956

25323

C. C. Riddle - Reg. L.S.

25323 Filed This 5 day of Oct 1956
and Recorded in Vol. 8 Page 117 of
Cddie K. Lawrence
Register Menne Conventual Greenville County, S.C.