

FILED  
GREENVILLE CO. S. C.

OCT 19 12 14 PM 1959

OLLIE FARMGORTH  
R.W.O.

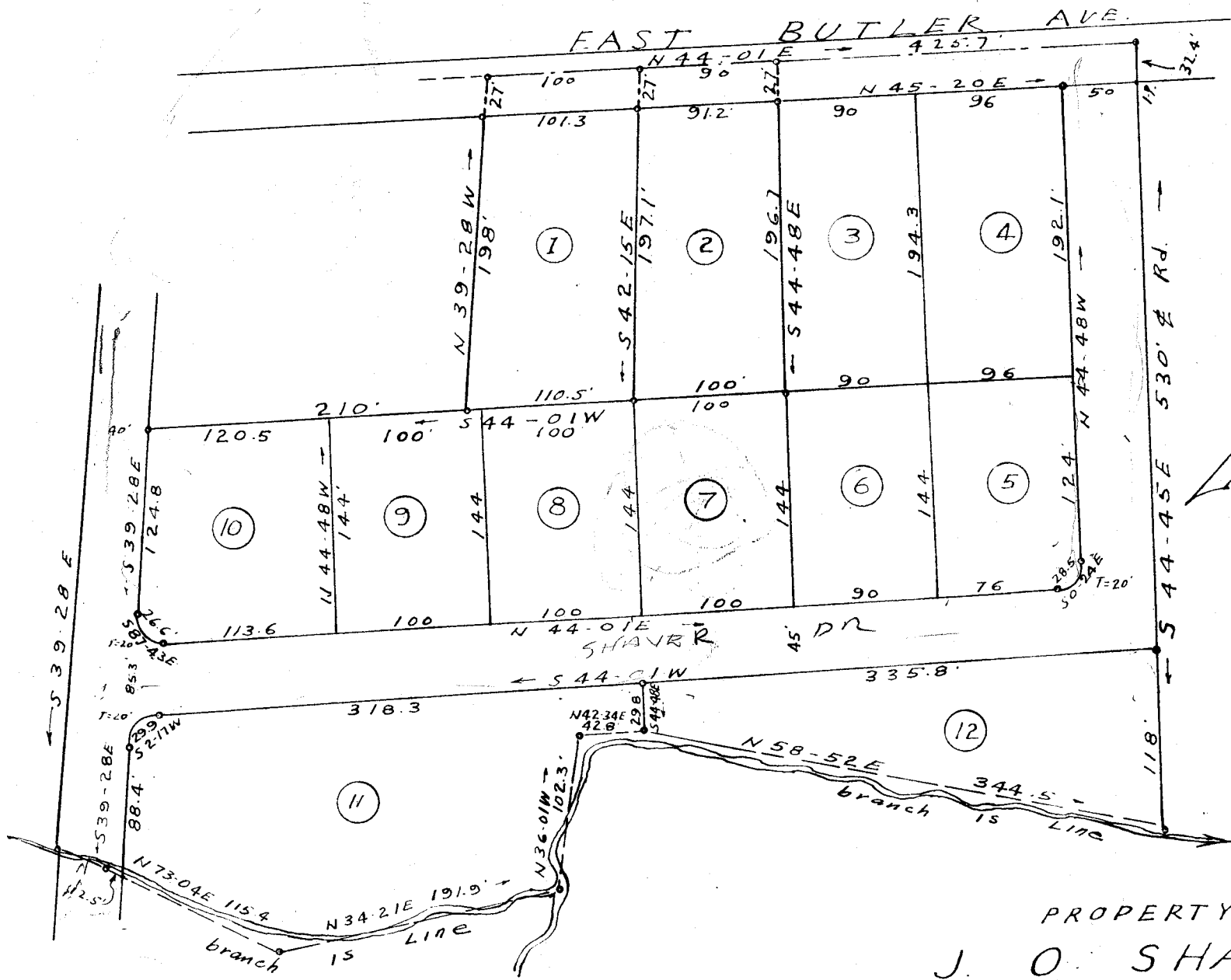
11890

OCT 19 1959

Note: Lots 3 through 12 surveyed & plat revised 12/1/56

504

LL-20



PROPERTY OF  
J. O. SHAVER

MAULDIN S. C.

SCALE 1" = 100' JULY 5, 1956

C. O. Riddle - Reg. L.S.

11890 Filed This 19 day of Oct 19 59  
 And Recorded in Vol. 44 - 20 p. M  
 Ollie Farmgorth  
 Register Mesne Conveyance Greenville County, S. C.