

Plat Book-KK-Page 85 A

85

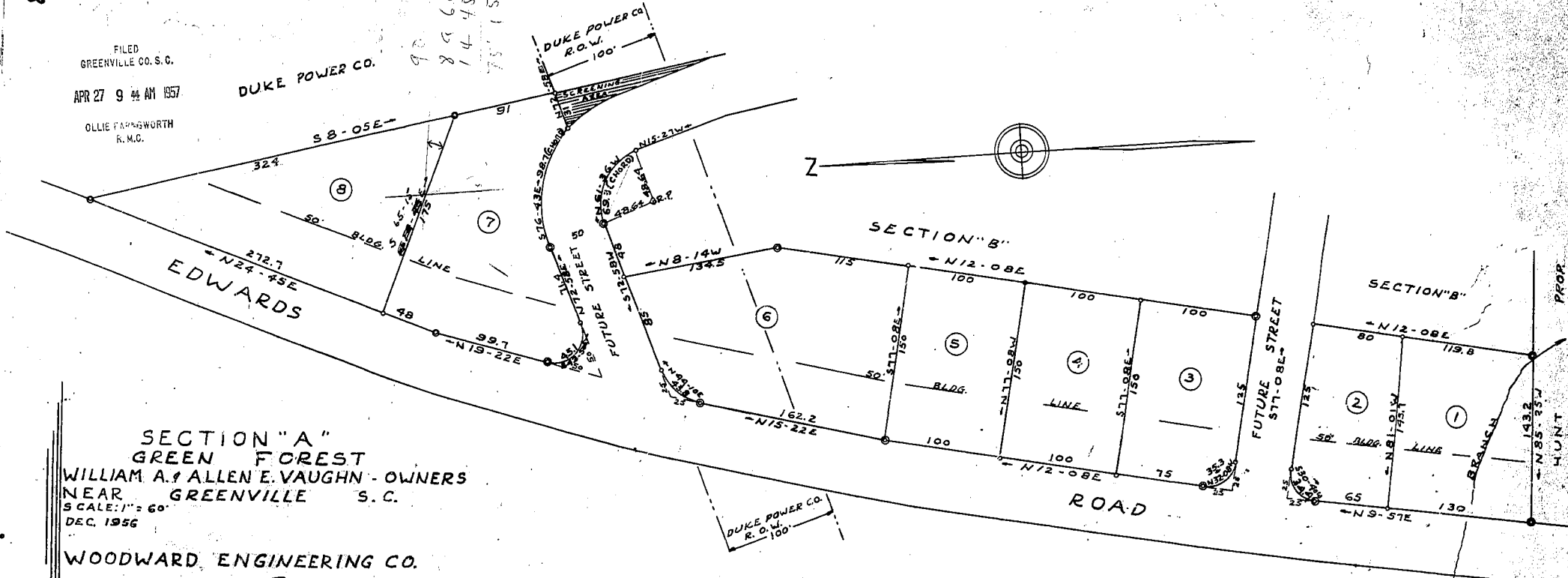
FILED
GREENVILLE CO. S.C.

APR 27 9 44 AM 1957

OLLIE FARMGORTH
R.M.C.

DUKE POWER CO.

DUKE POWER CO.
R.O.W. 100'



SECTION "A"
GREEN FOREST
WILLIAM A. & ALLEN E. VAUGHN - OWNERS
NEAR GREENVILLE S.C.
SCALE: 1" = 60'
DEC. 1956

WOODWARD ENGINEERING CO.
BY: J. MAC RICHARDSON

LOTS 1-8 ARE APPROVED
FOR RECORDING SINCE NO
NEW STREETS ARE INVOLVED
DEC. 10, 1956

George H. Rodgers
GEORGE H. RODGERS
DIRECTOR OF PLANNING AND ZONING

CERTIFICATE OF ENGINEER
I hereby certify that this is an accurate
Plat of an actual Survey Completed on
Dec. 7, 1956, by Woodward Engineering Co.
Madison A. Woodward
R.E. 30-730

CERTIFICATE OF OWNERS
We certify that we are the owners of
Property Shown on this Plat and do approve
of this Sub-division as Shown.
William A. Vaughn *Allen E. Vaughn*

○ INDICATES IRON PIN
◎ INDICATES CONC. MARKER

10071
KK-85 100

