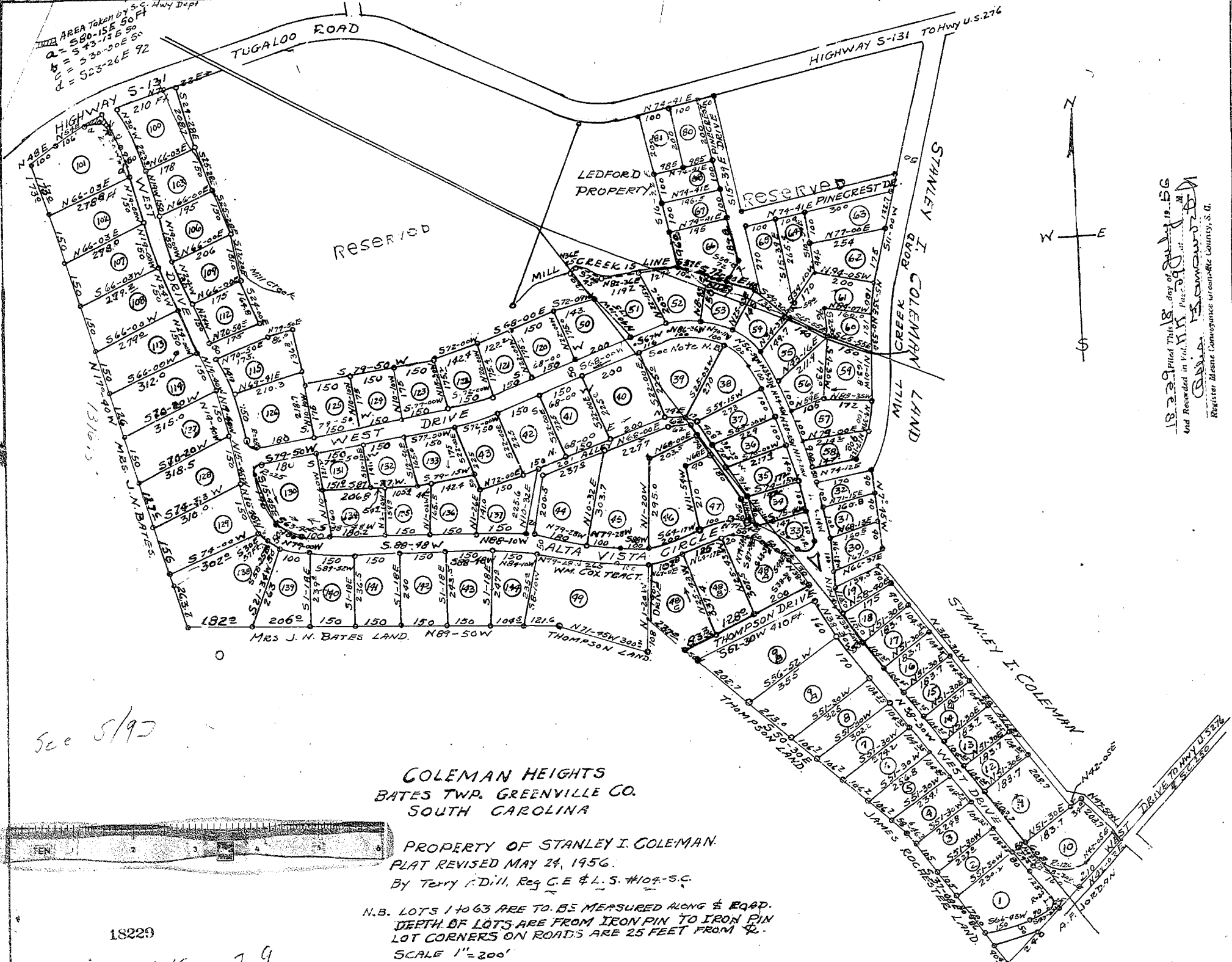


29

AREA Taken by S.C. Hwy Dept
A = 520-15E 50 FT
B = 543-15E 50
C = 530-30E 50
D = 523-26E 92



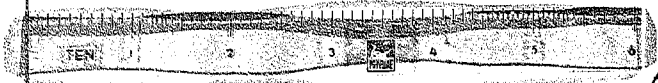
Filed This 18th day of July 1956
and Recorded in Vol. 111, Page 181
Terry A. Dill
Register, Beaufort County, S.C.

See 5/92

**COLEMAN HEIGHTS
BATES TWP. GREENVILLE CO.
SOUTH CAROLINA**

PROPERTY OF STANLEY I. COLEMAN
PLAT REVISED MAY 24, 1956.
By Terry A. Dill, Reg. C.E. # L.S. #104-5.C.

N.B. LOTS 1 TO 63 ARE TO BE MEASURED ALONG E ROAD.
DEPTH OF LOTS ARE FROM IRON PIN TO IRON PIN
LOT CORNERS ON ROADS ARE 25 FEET FROM C.
SCALE 1" = 200'



18229

KK-29 JUL 18 1956