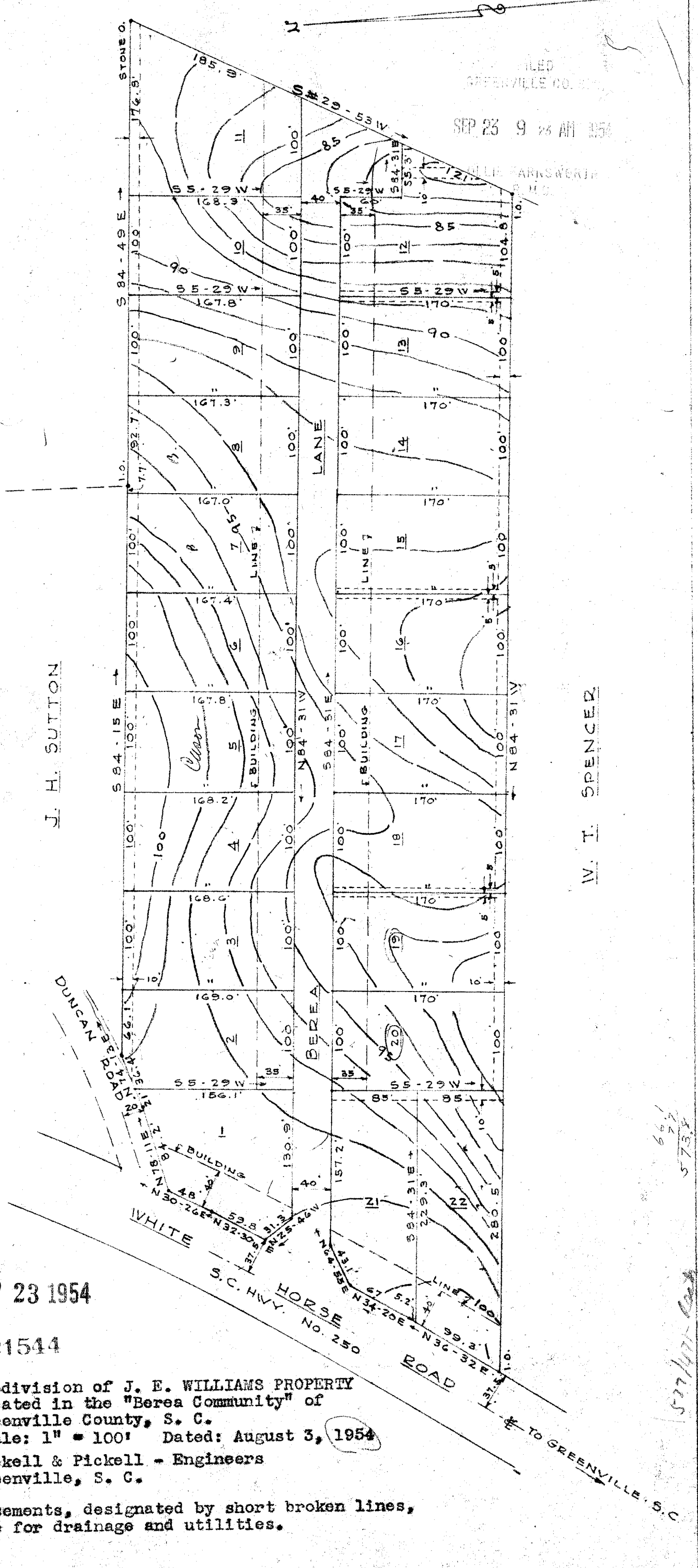


Iron pipe at all corners not otherwise marked.



FILED
GREENVILLE CO. S.C.
SEP 23 9 28 AM 1954

J. H. SUTTON

W. T. SPENCER

SEP 23 1954

21544

Subdivision of J. E. WILLIAMS PROPERTY
 Located in the "Berea Community" of
 Greenville County, S. C.
 Scale: 1" = 100' Dated: August 3, 1954
 Pickell & Pickell - Engineers
 Greenville, S. C.

Easements, designated by short broken lines,
are for drainage and utilities.

#21544 Filed This 23 day of SEP 19 54
 And Recorded in Vol. 141 Page 141 at 9:23 AM W.M.
 W. T. Spencer
 Register Meane Conveyance Greenville County, S. C.

66.1
77
573.4
577/107-108

#21544-141