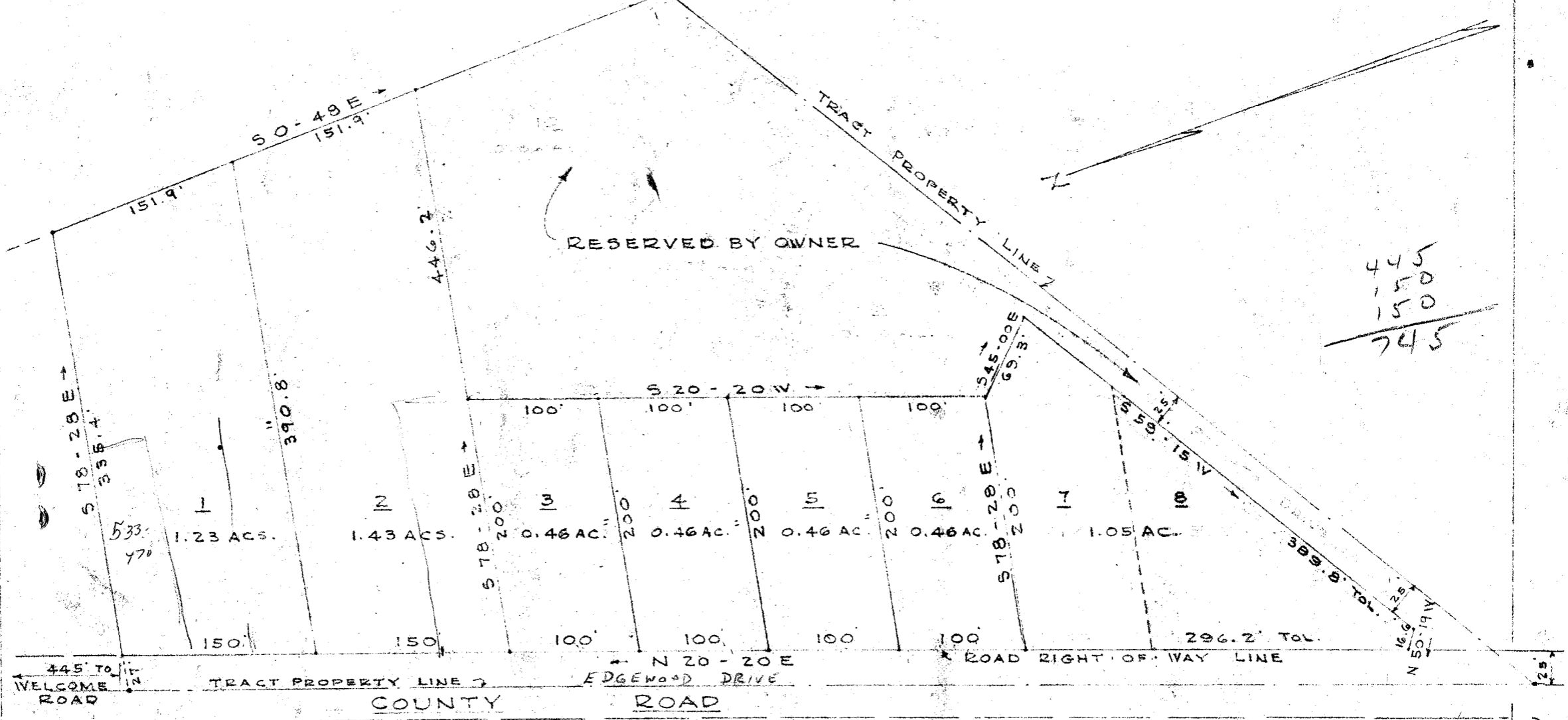


112

#19551 Filed This 30 day of Aug 1954  
And Recorded as Vol. 112, Page 112  
Elsie Tucker  
Greenville County, S.C.

NOTE: IRON PIPE AT ALL CORNERS.



AUG 30 1954  
19551

SUBDIVISION OF PROPERTY OF  
**TOM W. AND ELSIE TUCKER**  
LOCATED IN GREENVILLE COUNTY, S.C.  
SCALE: 1" = 100' DATED: APRIL 12, 1954  
PICKELL & PICKELL - ENGINEERS  
GREENVILLE, S.C.

See 50  
Aug 30, 1954  
No approval required.  
Just road  
See Planning Commission  
HH-112