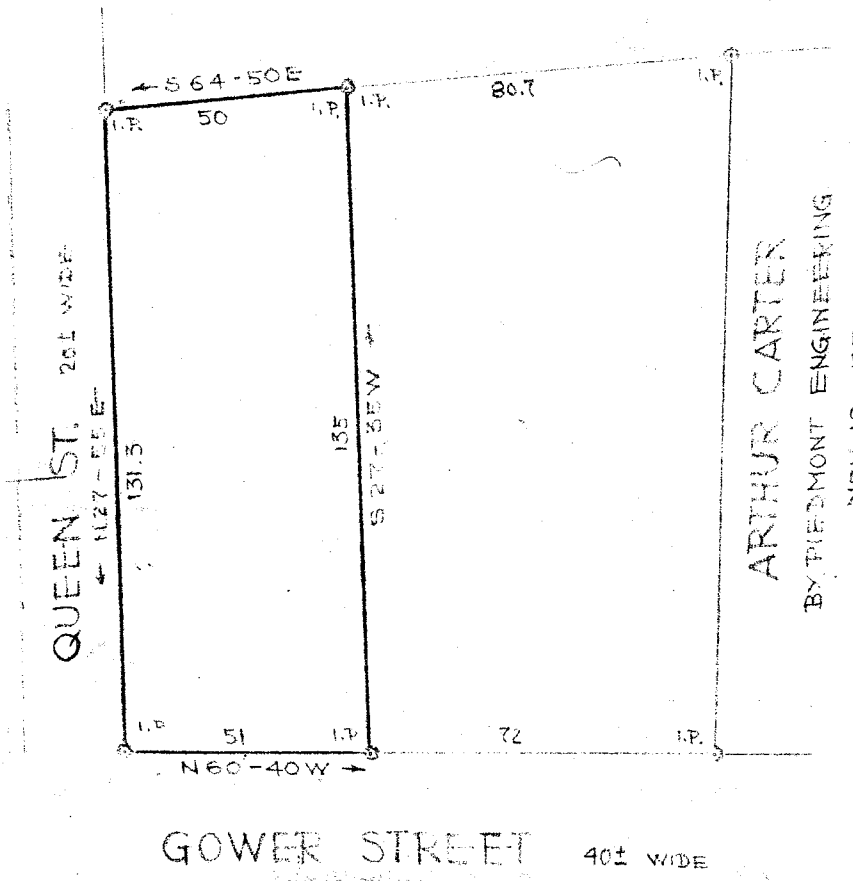


#17965 Filed this 11 day of Aug 1954

And Recorded in ~~112~~ - 112

Ellie Parisworth
Register Mount Carmel in Greenville County, S.C.



ARTHUR CARTER
BY PIEDMONT ENGINEERING
NOV. 18 - 1950

504-474

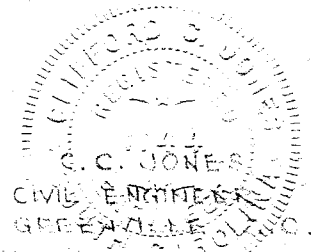
HM-113

PROPERTY OF
HAZEL E. ALTOM
GREENVILLE, S.C.
SCALE 1"=40' JULY 17-1954

FILED
GREENVILLE CO. S.C.
AUG 11 3 20 PM 1954
ELLIE PARISWORTH
R.M.C.

17965
AUG 11 1954

See 50A
HM-112



Corrected plat