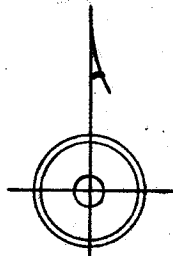


IRON PINS & CORNERS
CONCRETE MON. AS SHOWN - C

FILED
GREENVILLE CO. S. C.

APR 7 9 58 AM 1954

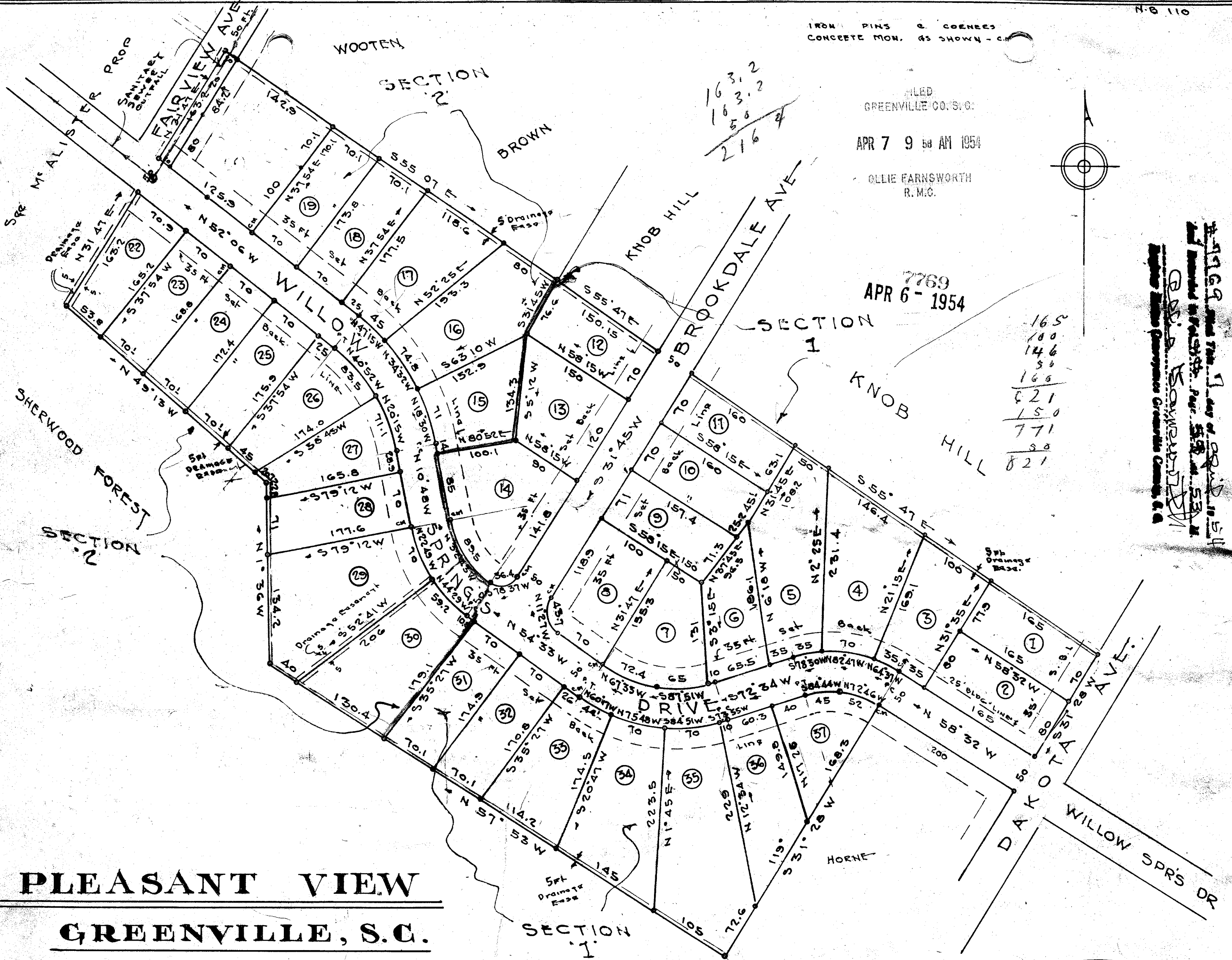
OLLIE EARNSWORTH
R.M.C.



7769
APR 6 - 1954

165
100
146
36
165
521
150
771
90
821

7769
APR 6 - 1954
OLLIE EARNSWORTH
R.M.C.



PLEASANT VIEW
GREENVILLE, S.C.

SCALE 1"=100

FEB. 1954

SECTION I APPROVED ONLY
SECTION II NOT APPROVED

PROPERTY OF

EASLEY LUMBER Co., INC.
EASLEY, S.C.

SHEET # 1
See Sheet # 2 for
RIGHT-OF-WAY DATA.

FINAL PLAN APPROVED
GREENVILLE CITY PLANNING & ZONING COMMISSION
DATE: FEB. 6, 1954 BY: *Charles M. Trout*
SECRETARY OF COMMISSION

