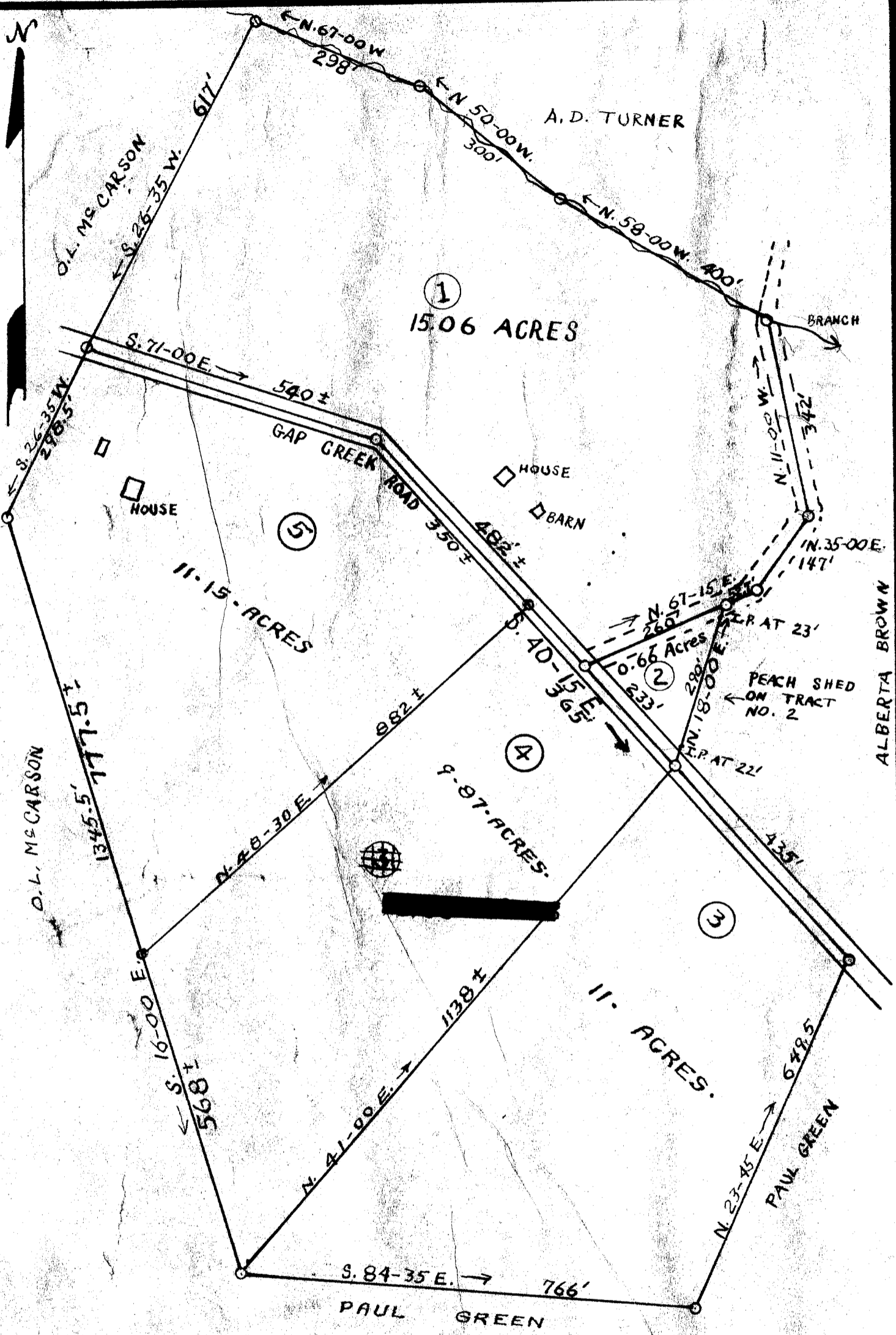


#28072 Filed This 7 day of Dec. 1954

and Recorded in Vol. 164 Page 32

Oliver Samworth

Register of Deeds Greenville County S.C.



PROPERTY OF  
**C.M. PONDER EST.** PLAT NO. THREE  
 LOCATED THREE MILES N. OF GREER  
 ONEAL TOWNSHIP GREENVILLE COUNTY  
**SOUTH-CAROLINA**

SCALE: 1" = 200 FEET OCT. 30, 1954  
 TRACT NO. 2 SURVEYED BY ME OCT. 27, 1954  
 TRACTS 1, 3, 4 & 5 TAKEN FROM PLAT  
 MADE BY H.L. DONAHOO, SURVEYOR, IN AUG. 1950  
 H.S. BROCKMAN REG' SURVEYOR  
 GREER, S.C. - NO. 959

See 50f  
 DEC 7 1954

28072 + 32 TRACED BY J.A.C.