

BAD COPY

FILED
GREENVILLE CO. S.C.

OCT 7 11 10 AM 1957

OLLIE W. WORTH
R.M.C.

Easements are reserved as shown and/or noted hereon and within the protective covenants recorded in Vol. 504, Page 453, R.M.C. office of Greenville County, South Carolina.

Dwellings upon corner lots shall face the corner formed by the intersection of the street right of way lines as set forth in and with the conditions of waiver as set forth in the protective covenants recorded in Vol. 504, Page 453, R.M.C. office of Greenville County, South Carolina.

Building setback lines are established as set forth in the protective covenants recorded in Vol. 504, Page 453, R.M.C. office of Greenville County, South Carolina.

All lots and any area reserved for park purposes are subject to the restrictions, covenants, reservations, and easements as shown on this plat and as set forth in the protective covenants recorded in Vol. 504, Page 453, R.M.C. office of Greenville County, South Carolina.

Streets shown hereon, if not previously dedicated, are hereby tendered for dedication to public use.

Carter Land Development, Inc.

20 ft. drainage easements along all live streams and branches, being 10 ft. each side of the center thereof.

Iron pins at all corners except as noted and all distances shown are from iron pin to iron pin.

0 - Denotes concrete reference monuments.

This is to certify that the bearings and distances shown hereon are correct as determined by a complete and accurate survey.

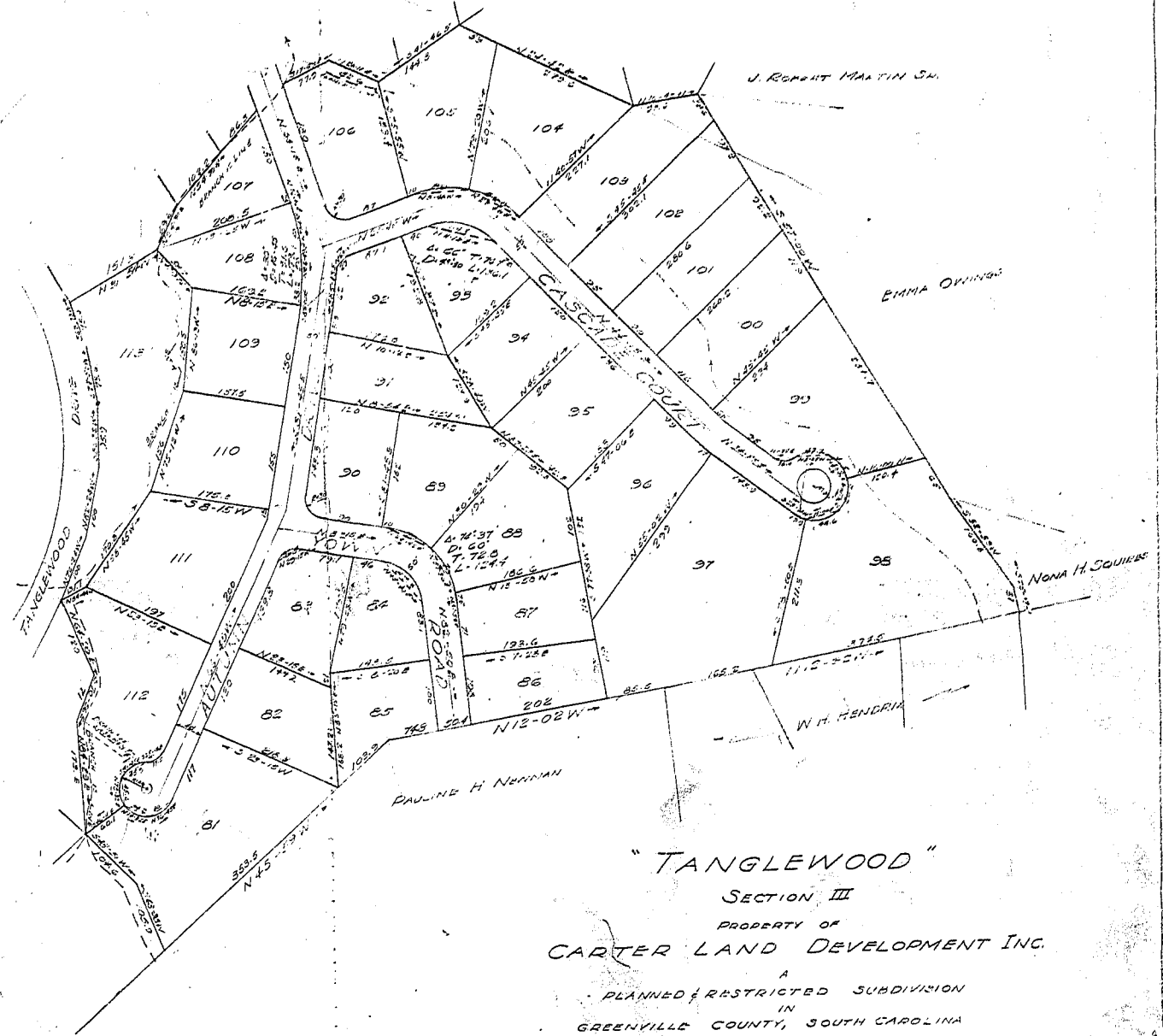
Robert C. Lose, L.S. # 1572

Charles F. Webb, L.S. # 1577

34511
32800

SECTION II

SECTION II



"TANGLEWOOD"

SECTION III

PROPERTY OF
CARTER LAND DEVELOPMENT INC.

A
PLANNED & RESTRICTED SUBDIVISION
IN
GREENVILLE COUNTY, SOUTH CAROLINA

SCALE 1"=100'

SEPTEMBER 1954

OCT 7 1957

22687

R.C. LOSE, L.S.; C.F. WEBB, L.S.; C.M. TROST, L.A.

Vertical handwritten notes on the left margin, including '34511' and '32800'.

Handwritten notes at the bottom left corner, including '34511' and '32800'.