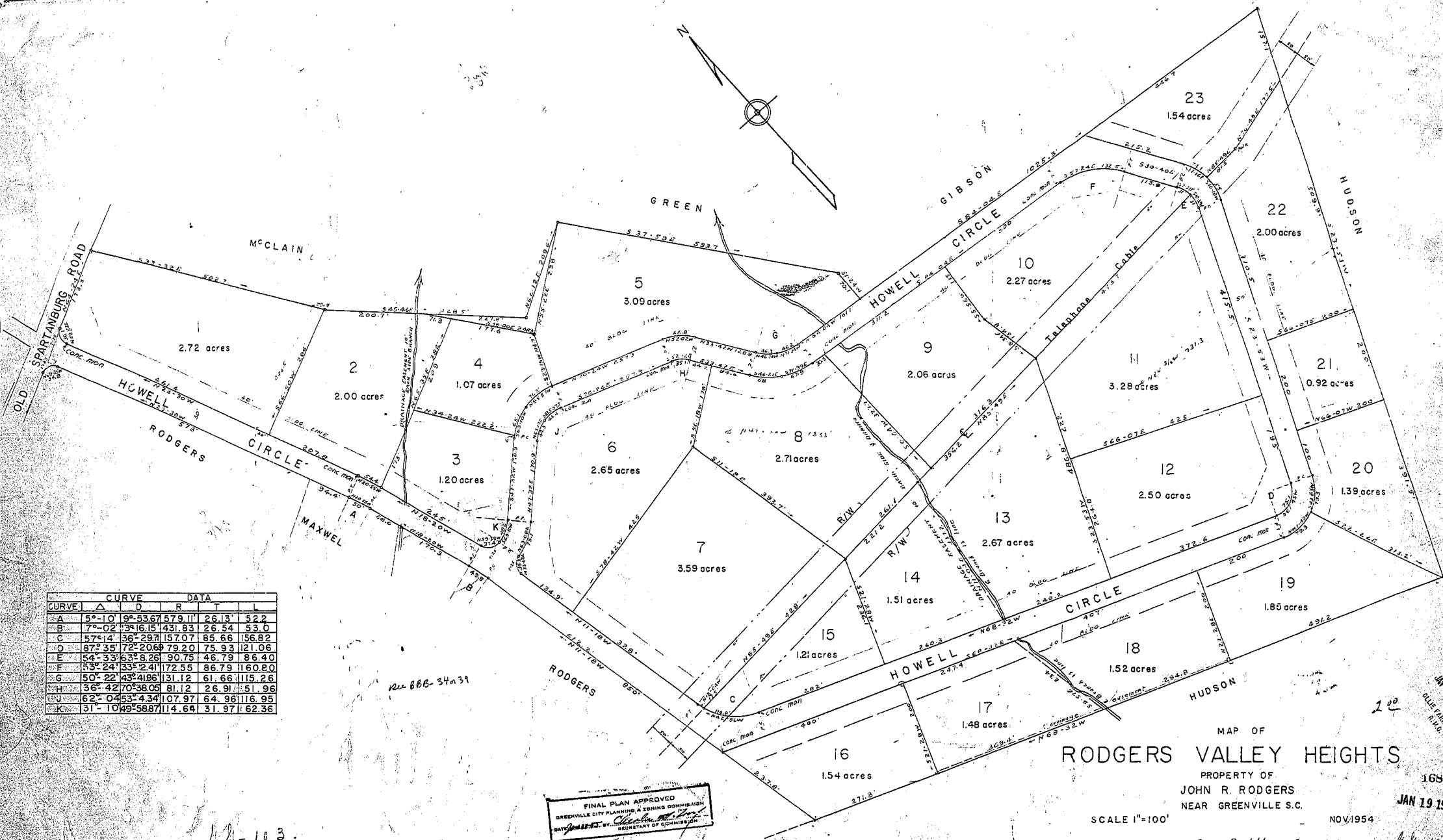


# Plat Book-GG-Page 103



CURVE	Δ	D	R	T	L
A	5°-10'	96.53	67.579	11'	26.13'
B	7°-02'	336.15	431.83		26.54'
C	57°-14'	36°-29'	157.07		85.66'
D	87°-35'	72°-20'	79.20		75.93'
E	54°-33'	63°-8'	26.90		75.46'
F	53°-24'	33°-24'	172.55		86.79'
G	50°-22'	43°-49'	131.12		61.66'
H	36°-42'	70°-38'	05.81		26.91'
J	62°-04'	53°-43'	107.97		64.96'
K	31°-10'	1049.58	67.14		31.97'

Rev. BBB-34n31

FINAL PLAN APPROVED  
 GREENVILLE CITY PLANNING & ZONING COMMISSION  
 DATE FILED: BY: [Signature]  
 REGISTER OF COMMISSIONERS

MAP OF  
**RODGERS VALLEY HEIGHTS**

PROPERTY OF  
 JOHN R. RODGERS  
 NEAR GREENVILLE S.C.

SCALE 1"=100' NOV. 1954

1680

JAN 19 1955

C.O. Riddle - Reg. L.S.

103

11680 Filed This 19 day of 2 1955  
 and Recorded in Vol. 99 Page 103 at 10:30 A.M.  
 Register Home Loans and Mortgages Greenville County, S.C.