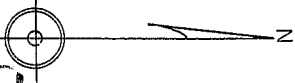
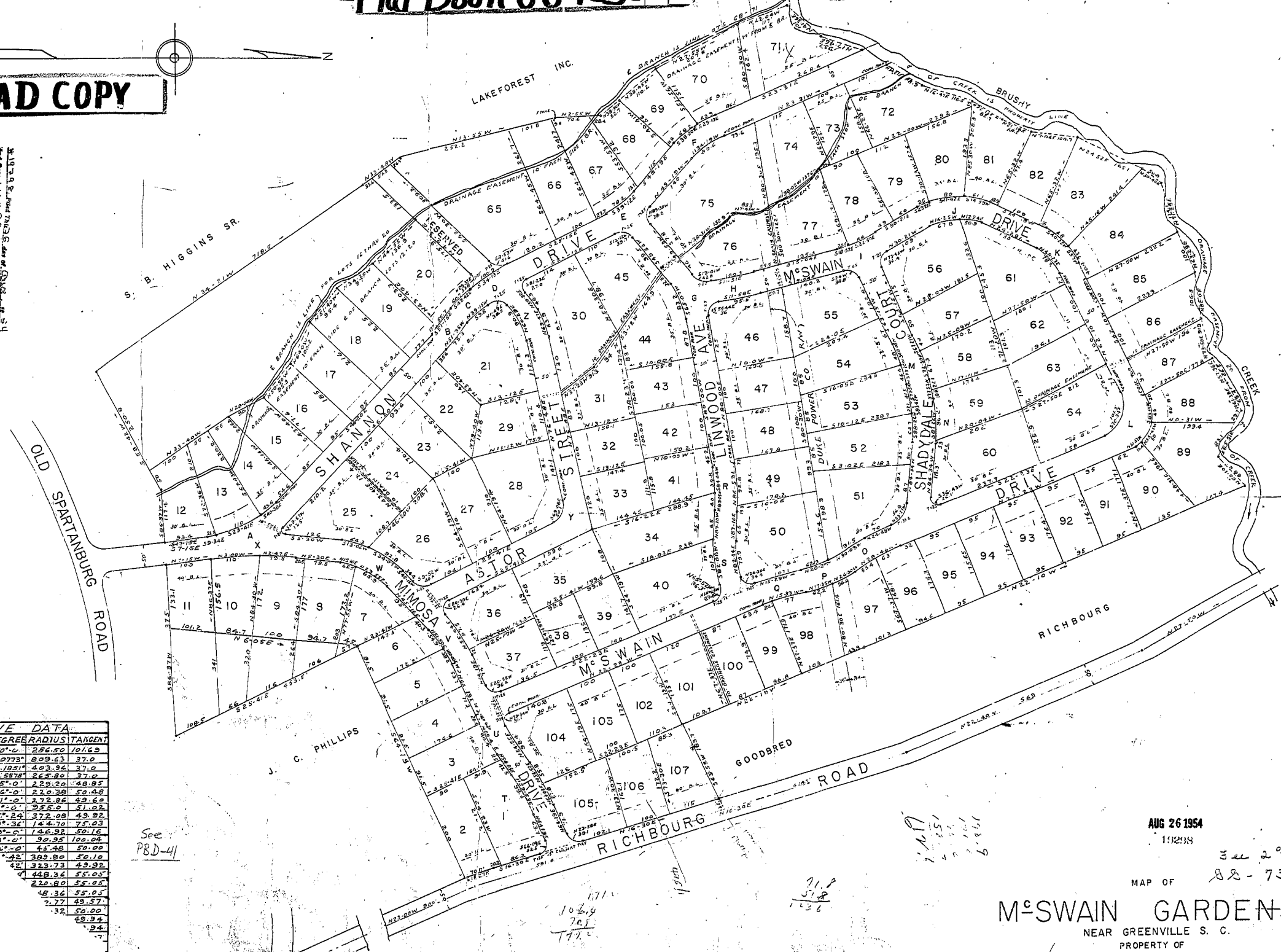


**BAD COPY**



This is a true and correct copy of the original plan as recorded in the office of the County Clerk of Greenville County, South Carolina, on the 26th day of August, 1954.



CURVA	DELTA	DEGREE	RADIUS	TANGENT
A	39°-05'	20°-0'	286.50	101.63
B	5°-14'	7°07'13"	809.63	37.0
C	10°-28'	14°14'26"	403.92	37.0
D	21°-04'	28°28'52"	201.96	37.0
E	21°-04'	28°28'52"	201.96	48.95
F	23°-48'	26°-0'	230.38	50.48
G	30°-07'	21°-0'	272.86	49.60
H	2°-07'	6°-0'	955.0	51.02
I	7°-57'	24°-0'	372.89	49.92
J	39°-34'	14°-17'	75.03	27.0
K	39°-0'	146.82	50.16	27.0
L	63°-0'	90.35	100.04	27.0
M	63°-0'	45.48	50.00	27.0
N	42°	389.80	50.10	27.0
O	42°	323.73	49.92	27.0
P	42°	448.94	51.02	27.0
Q	42°	230.80	50.05	27.0
R	48.34	55.05	27.0	27.0
S	7.77	49.57	27.0	27.0
T	.32	50.00	27.0	27.0
U		49.94	27.0	27.0
V		.94	27.0	27.0

See PBD-41

106.19  
 76.5  
 177.2

31.8  
 31.8  
 12.6

1.251  
 1.141  
 1.6

AUG 26 1954  
 19298

See 2<sup>nd</sup>  
 82-75

MAP OF

**McSWAIN GARDENS**

NEAR GREENVILLE S. C.

PROPERTY OF

J. J. MESWAIN EST. & Wm. R. TIMMONS Jr.

SCALE 1"=100'

JULY 1954

FINAL PLAN APPROVED  
 GREENVILLE CITY PLANNING & ZONING COMMISSION  
 DATE 8/26/54 BY [Signature]  
 SECRETARY OF COMMISSION