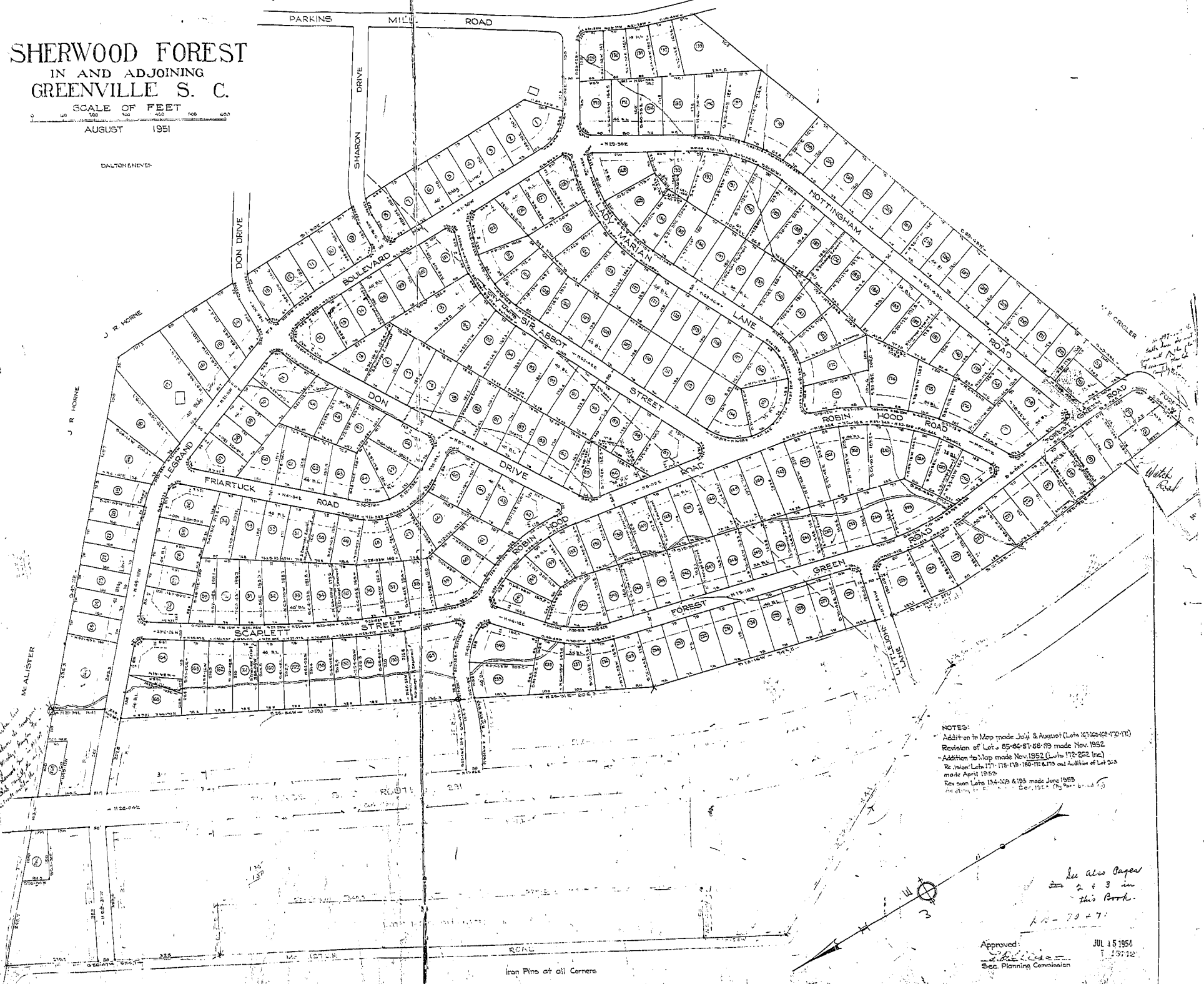


# SHERWOOD FOREST IN AND ADJOINING GREENVILLE S. C.

SCALE OF FEET  
0 100 200 300 400 500

AUGUST 1951

DALTON EMBERS



NOTES:  
 - Addition to Map made July & August (Lots 103-105, 107-110)  
 - Revision of Lots 85-94-97-98-99 made Nov. 1952  
 - Addition to Map made Nov. 1952 (Lots 112-282, etc.)  
 - Revision of Lots 171-175-176-180-181-182 and Addition of Lot 203 made April 1953  
 - Revision Lots 194-208 & 195 made June 1953  
 - Cor. 1951 (No. 100-101-102)

*See also pages 2 & 3 in this Book.*

*100-70-71*

Approved: *[Signature]* JUL 15 1954  
 Sec. Planning Commission

Iron Pins at all Corners