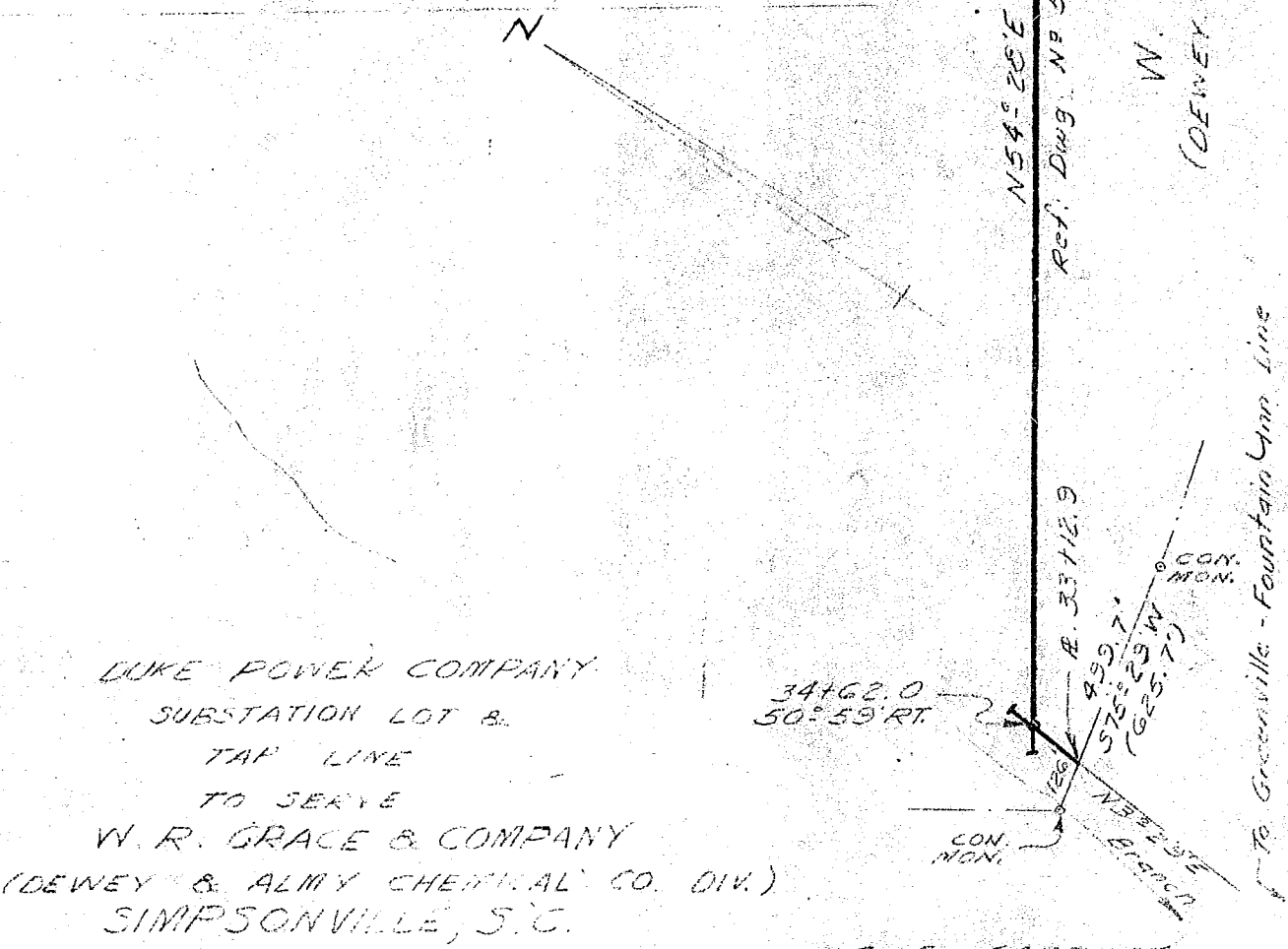


DETAILS OF SUBSTA.  
SCALE: 1" = 30'



DUKE POWER COMPANY  
SUBSTATION LOT B.  
TAP LINE  
TO SERVE  
W. R. GRACE & COMPANY  
(DEWEY & ALMY CHEMICAL CO. DIV.)  
SIMPSONVILLE, S.C.

SCALE: 1" = 400' MARCH 28, 1955 C. G. GARRETT  
BOOK NO. 436 FILE NO. 14-147

W. R. GRACE & CO.  
(DEWEY & ALMY CHEMICAL CO. DIV.)  
Ref. Dwg. No. 52-02  
N54°28'E  
S55°32'E  
S75°59'W (625.7')

99-42

#12764 filed this 17 day of May 1955  
And Recorded in Vol. 9 of the H.D. 10th R.  
C.G. GARRETT  
Register of Deeds Greenville County, S.C.