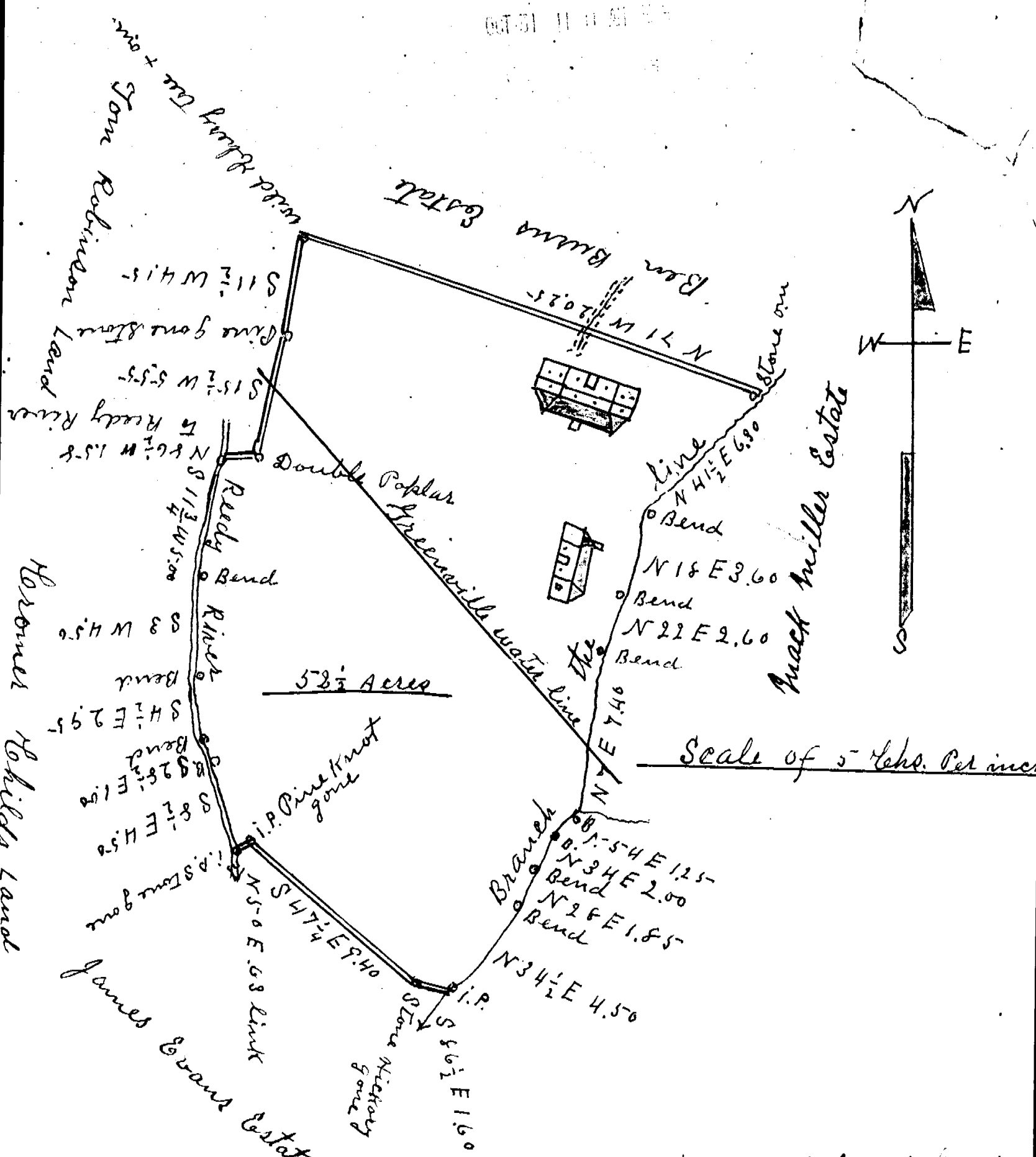


OUT 31 11 11 AM '58



5.2 1/2 Acres

Scale of 5' Lchs. Per inch

South Carolina  
Greenville County

Property of Mrs. J. C. White  
Surveyed in 1927 and  
a Part in 1942  
W. A. Hester L.S.

11370

Recorded October 31, 1958 at 11:11 A. M. #11370