

LITTLE TEXAS ROAD
 LITTLE TEXAS ROAD CORNERS
 100' - 180' - 100' - 180'

Page 7 - Page 0

A SUBDIVISION FOR -

LEE ROY STYLES

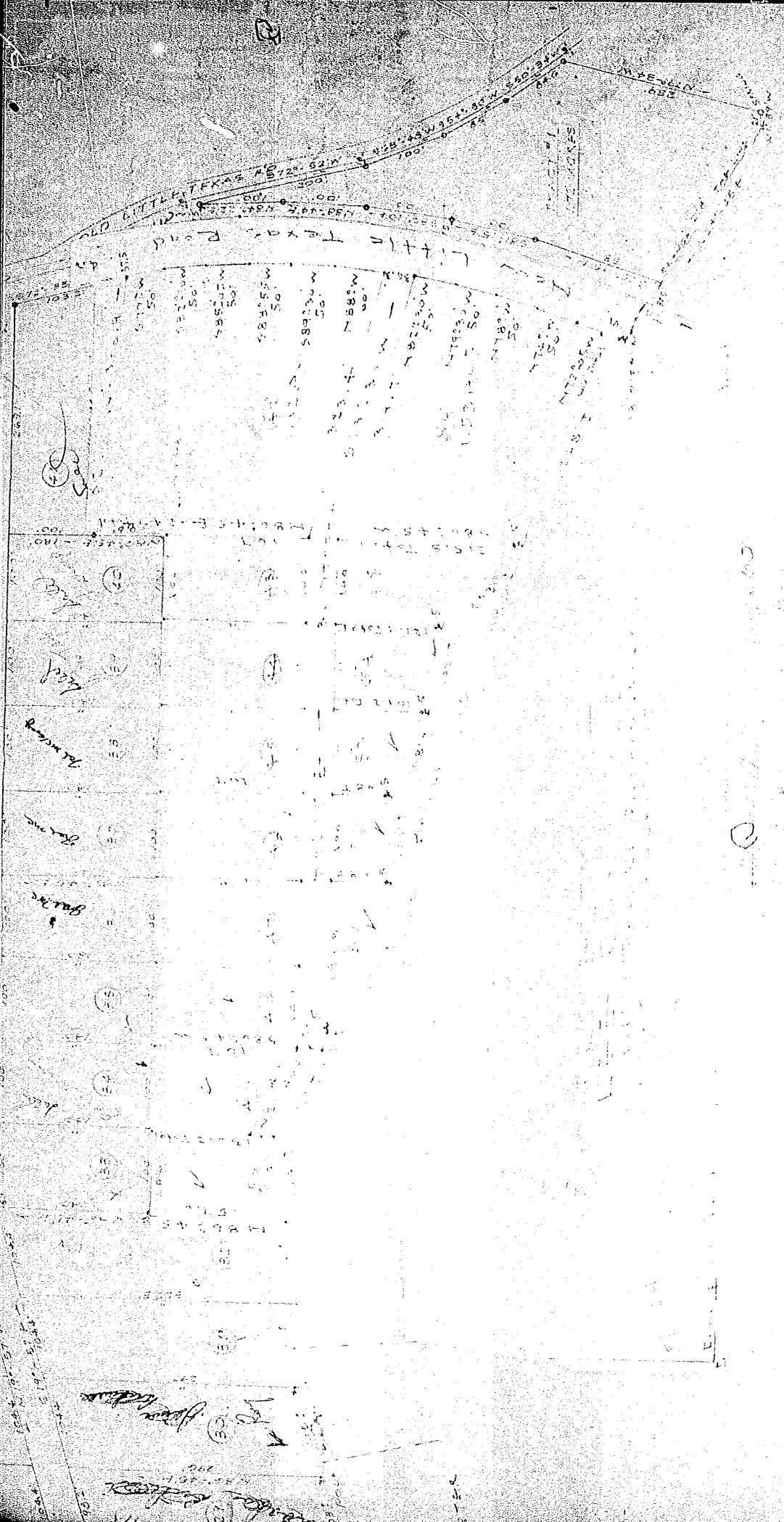
TRAVELLERS REST, E.C.

DICKENS SIGNALL ENGINEERS

GREENVILLE, S.C.

SCALE 1" = 100'

DATE: SEPT. 1950



Recorded Dec. 13, 1936 at 9:35 A.M. # 30772