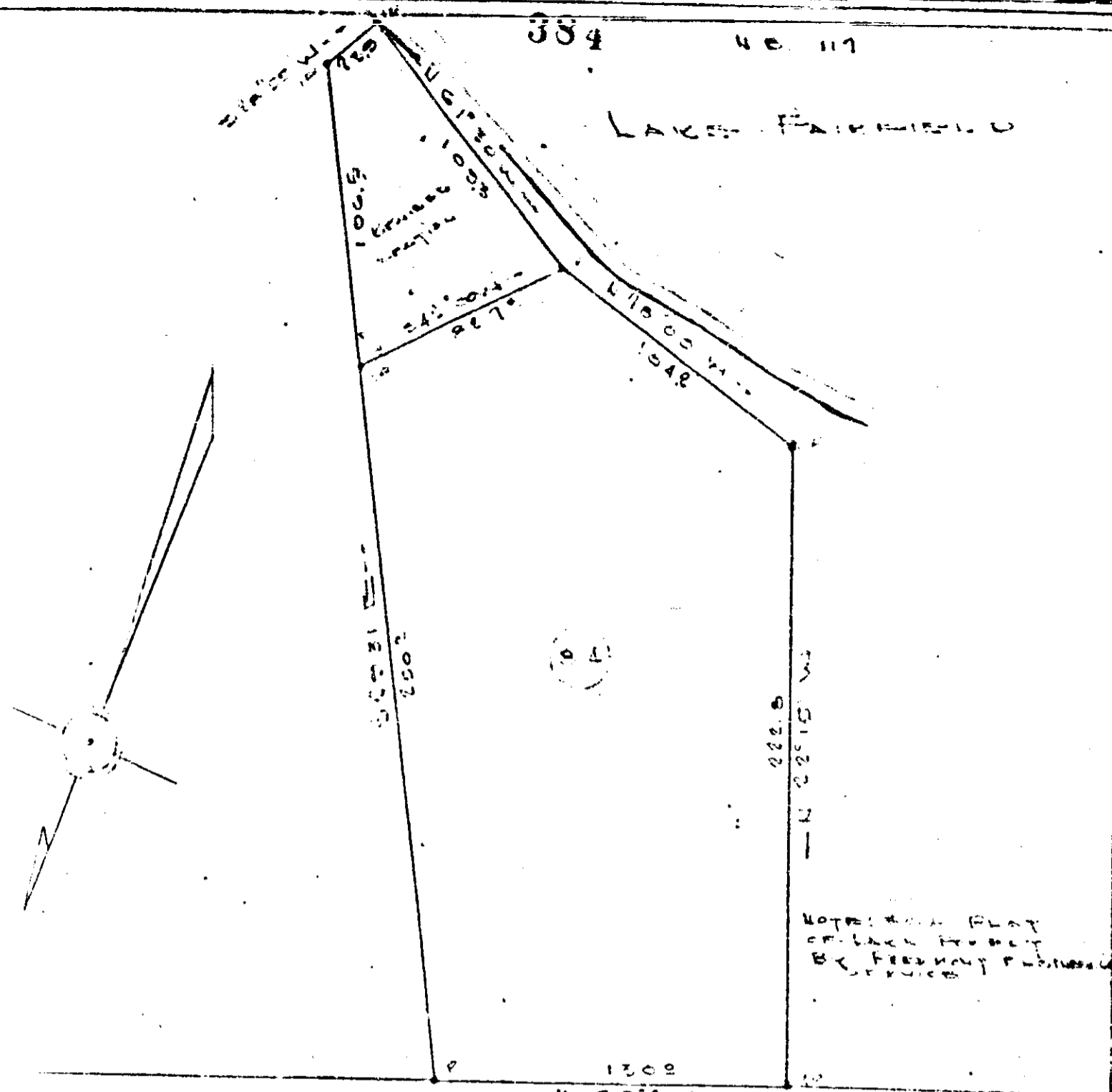


LAKE FAIRMERE



NOTE: THIS PLAT
OF LOTS 84 & 85
BY FREEMAN P. BROWN
IS CORRECT

LAKE FAIRMERE DRIVE

SHANNON DRIVE

STATE W. 12 1/2\"/>

LOT 84, REVISION
 LAKE FAIRMERE
 GREENVILLE, S.C.
 Section 1760 June 17, 1950
 FEB 1 1950
 C. C. SONS & ASSOCIATES
 ENGINEERS
 GREENVILLE, S.C.

Recorded February 1st, 1950
at 3:51 P.M. #2597. Plat Book FF Page 384.