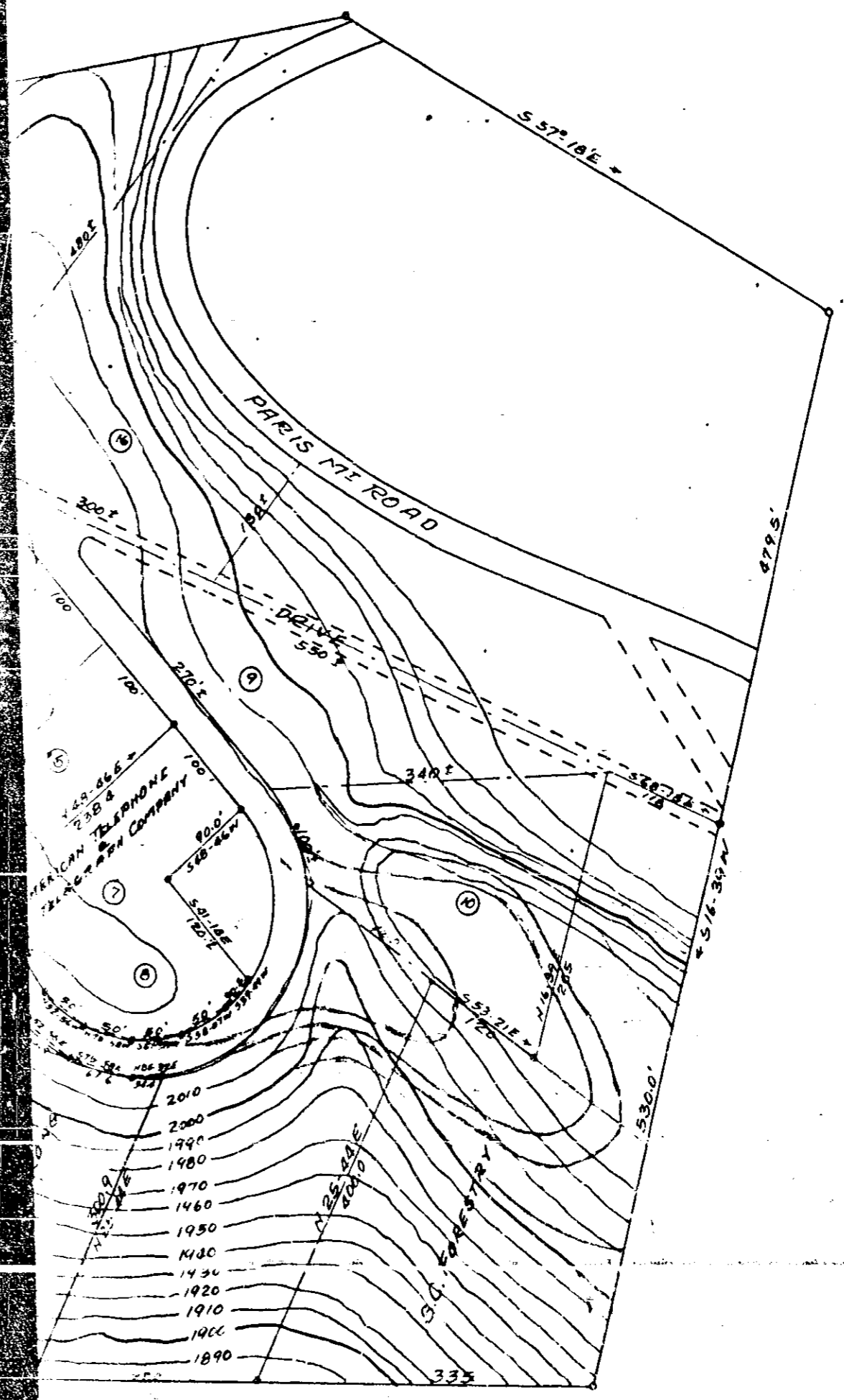


PROPOSED DEVELOPEMENT ON PARIS
 PICKELL & PICKELL ENGINEERS

Recorded April 29th. 1953 at 11:51 A. M.
 #9730

SCALE :- 1" = 100'

DATE - A



PARIS MOUNTAIN FOR R.A. JOLLEY
 GREENVILLE, S.C.

April 17, 1947