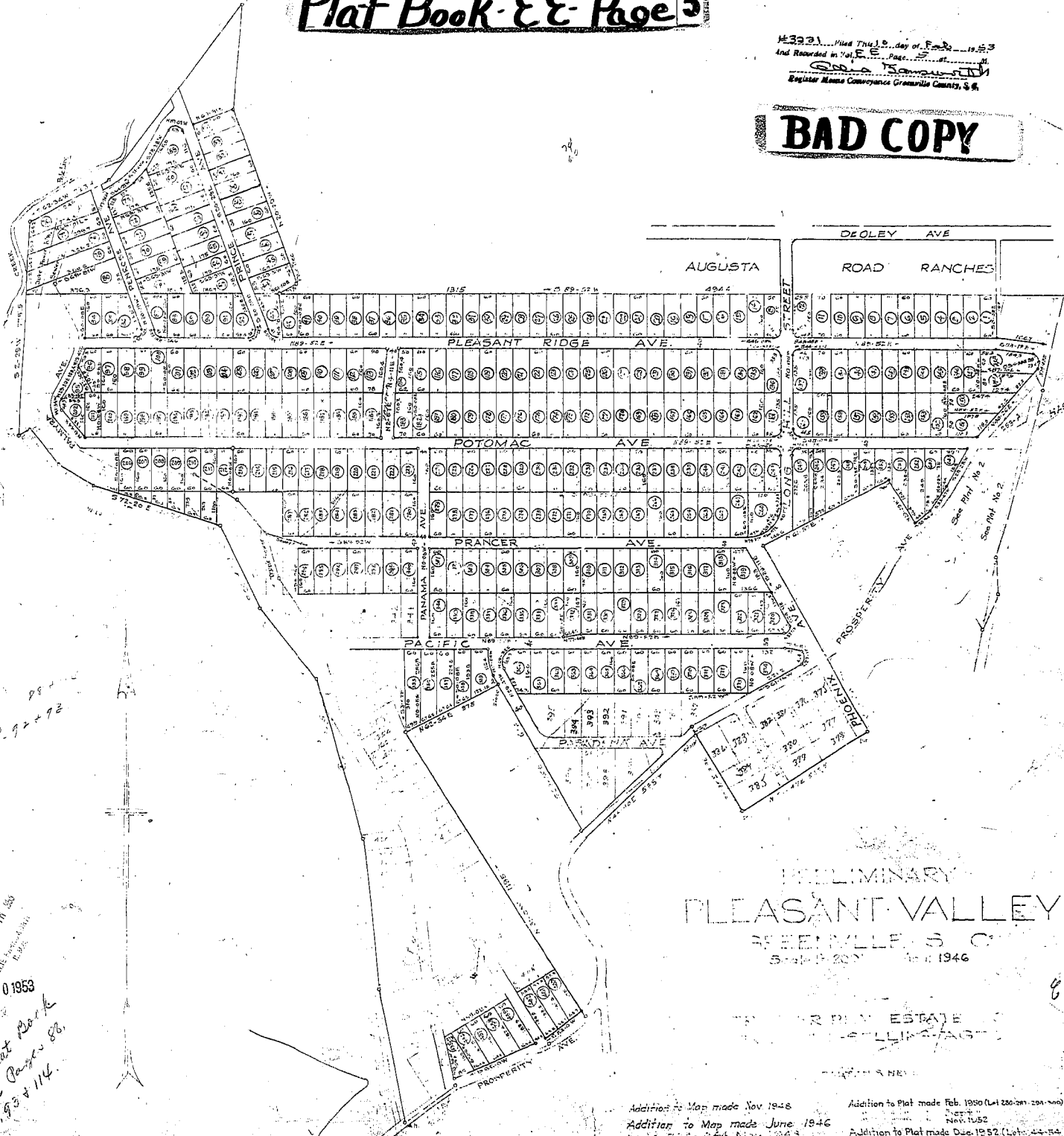


Map No. 13221, Made This 10th day of Feb. 1953
And Recorded in Vol. E E, Page 5, of the
Register & Conveyance Granville County, S. C.
S. C. Registrar

BAD COPY



284
285
286
287
288
289
290
291
292
293
294
295
296
297
298
299
300
301
302
303
304
305
306
307
308
309
310
311
312
313
314
315
316
317
318
319
320
321
322
323
324
325
326
327
328
329
330
331
332
333
334
335
336
337
338
339
340
341
342
343
344
345
346
347
348
349
350
351
352
353
354
355
356
357
358
359
360
361
362
363
364
365
366
367
368
369
370
371
372
373
374
375
376
377
378
379
380
381
382
383
384
385
386
387
388
389
390
391
392
393
394
395
396
397
398
399
400
401
402
403
404
405
406
407
408
409
410
411
412
413
414
415
416
417
418
419
420
421
422
423
424
425
426
427
428
429
430
431
432
433
434
435
436
437
438
439
440
441
442
443
444
445
446
447
448
449
450
451
452
453
454
455
456
457
458
459
460
461
462
463
464
465
466
467
468
469
470
471
472
473
474
475
476
477
478
479
480
481
482
483
484
485
486
487
488
489
490
491
492
493
494
495
496
497
498
499
500

FEB 10 4 1953

FEB 10 1953

See Plat Book
Pages 88,
92, 93 & 114.

Lots numbered in Circles have been staked with Iron Pins

PRELIMINARY
PLEASANT VALLEY
GREENVILLE, S. C.

5th Feb. 1946

Addition to Map made Nov. 1948
Addition to Map made June 1946
Lots 284-324 Nov. 1944
Lots 15-16 & 18 Revised Sept. 1948
159-246 Aug. 1949
Addition to Plat made Feb. 1950 (Lots 200-201-202-203-204)
Nov. 1952
Addition to Plat made Dec. 1952 (Lots 44-54
55-73-74-80)
Addition of Lots 25-26-202, made Jan. 1953 (Book 218)

88-5