

THE FEDERAL LAND BANK OF COLUMBIA.

TRACING SHEET FOR PLATS.

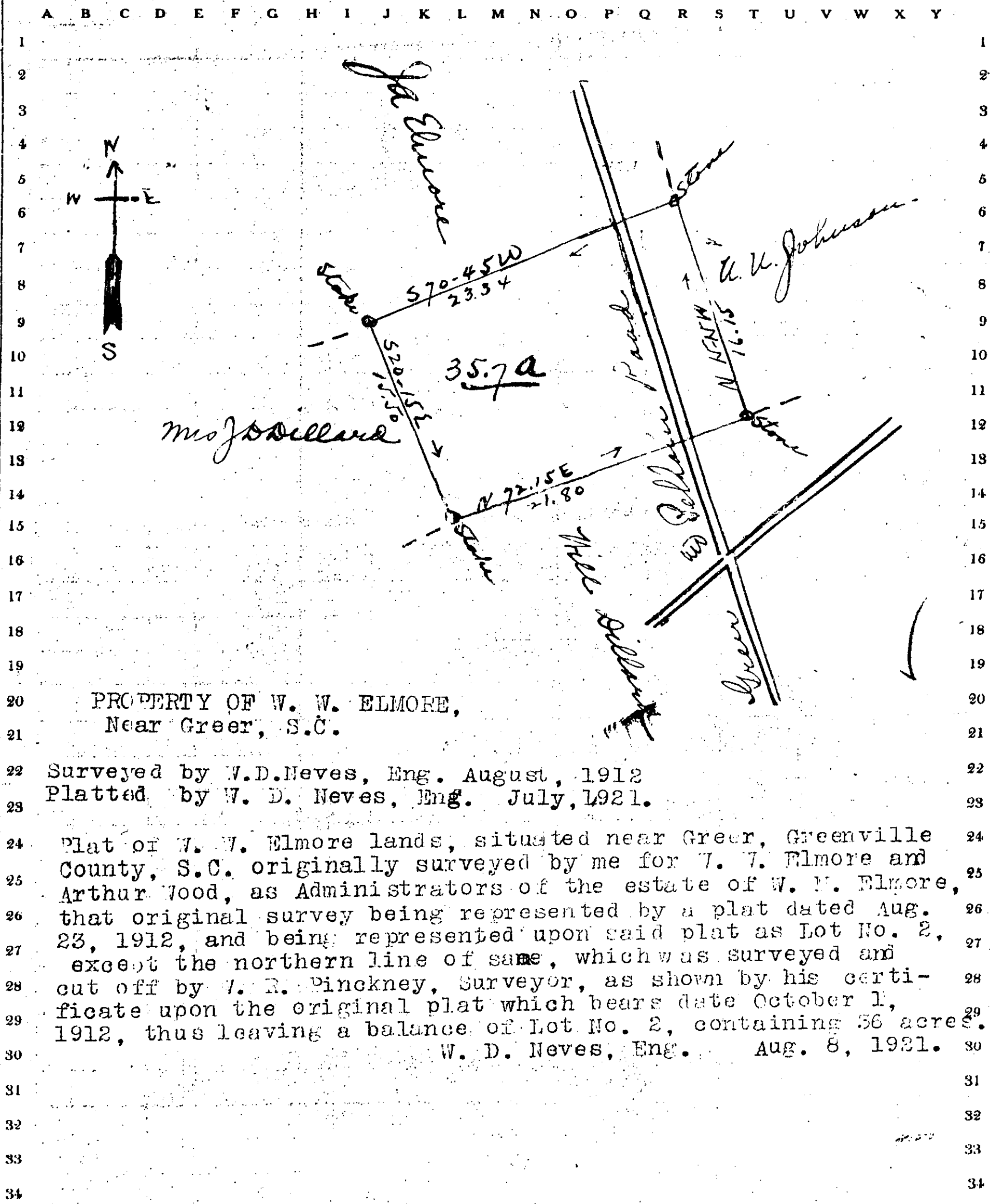
Lands of W. W. Elmore

APR 10 1932

1 This sheet must be used for tracing plats of tracts of the lands abstracted in the chain of title. Place this sheet over the plat to be traced so that the same will appear as nearly in the center of the sheet as possible; then trace all lines, courses and distances. Always show all adjoining landowners and indicate the point of the compass and copy all legends or explanatory notes, showing the date of survey, purpose of the same and by whom made.

2 If the plat is too large to be traced on this sheet, make the tracing first on Sheet Q-1, and then reduce it on Sheet Q in the following manner: Assume that a certain corner on the tracing on Sheet Q-1 lies within Block 14-G. Refer to Sheet Q and locate this corner in the corresponding Block 14-G. The next corner on Sheet Q-1 lies within Block 9-L. Refer to Sheet Q and locate this corner in the corresponding Block 9-L. Draw a line connecting these two points as the corresponding points on Sheet Q-1 are connected. So proceed around the perimeter of the plat of lands traced on Sheet Q-1, locating the corresponding corners on Sheet Q, and connecting the various corners so located until the point of departure is reached.

3 This sheet must be inserted in the abstract at its proper place, which is immediately following the instrument or proceedings which refers to the plat, of which this is a copy.



PROPERTY OF W. W. ELMORE,
 Near Greer, S.C.

Surveyed by W.D. Neves, Eng. August, 1912
 Platted by W. D. Neves, Eng. July, 1921.

Plat of W. W. Elmore lands, situated near Greer, Greenville County, S.C. originally surveyed by me for T. T. Elmore and Arthur Wood, as Administrators of the estate of W. W. Elmore, that original survey being represented by a plat dated Aug. 23, 1912, and being represented upon said plat as Lot No. 2, except the northern line of same, which was surveyed and cut off by T. R. Pinckney, Surveyor, as shown by his certificate upon the original plat which bears date October 1, 1912, thus leaving a balance of Lot No. 2, containing 56 acres.

W. D. Neves, Eng. Aug. 8, 1921.

Sheet Q

19407

W. D. Neves
 133 921 10 11