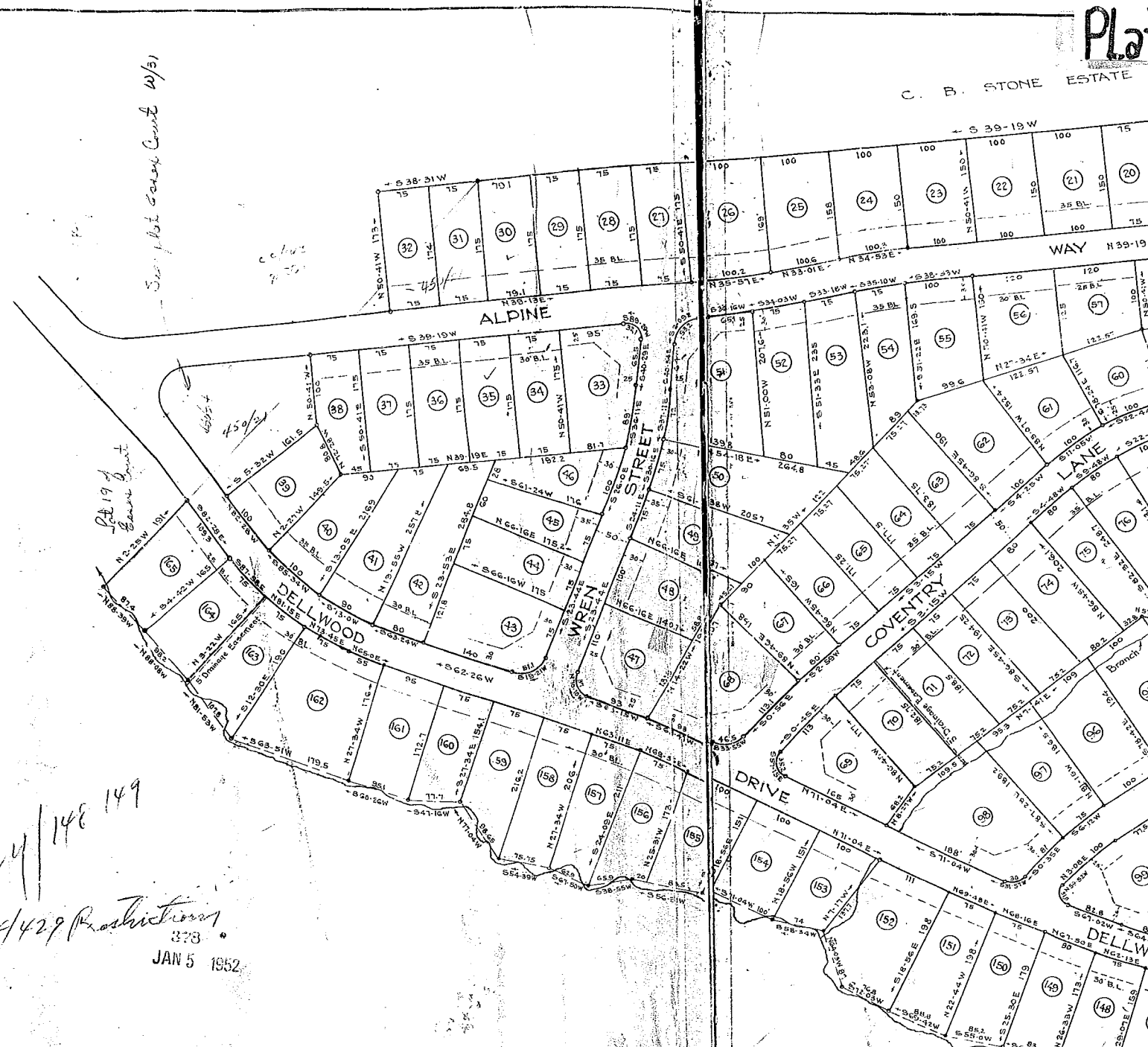


C. B. STONE ESTATE

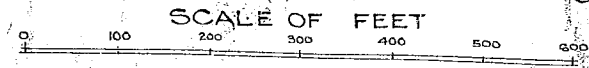
See Plat Case Court 10/31

Lot 19 of Green Court

See 4/148 149
444/429 Restrictions
373
JAN 5 1952



PROPERTY OF
 CENTRAL DEVELOPMENT CORPORATION
 GREENVILLE S. C.



OCTOBER 1951

DALTON & NEVES

ADDITION TO MAP
 Approved:
L. Hollister
 Sec. Planning Commission

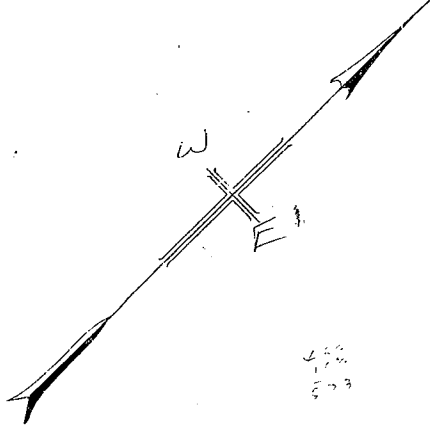
Addition to Map made Dec. 1951

ADDITION TO MAP
 Recorded
 at Book Pages
 of R.M.C.
 Greenville County S.C.

378 Filed This 5 day of Oct 19 50
And Recorded in Vol. 13 Page 23 of 73
S. H. FARMER
Register Means Conveyance Greenville County, S. C.

Plat Book-BB-Page 22 23

FILED
GREENVILLE CO. S. C.
JUL 5 10 11 AM 1952
OLLIE FAIRGORTH
R.M.C.



BAD COPY



Approved:

Sec. Planning Commission

Recorded Oct 23 1951
In Plat Book Y Pages 148-149
Office of R.M.C.
Greenville County S. C.

Iron Pins at all Corners.



7