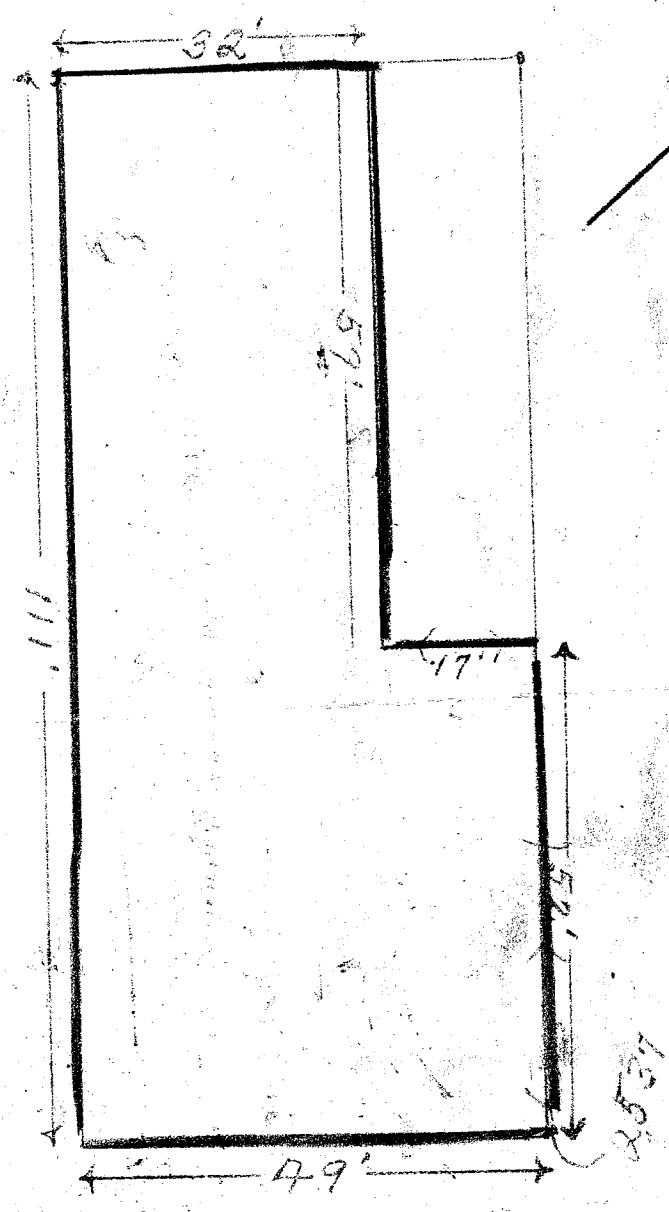


20

Area outlined in red leased to American Express Field Warehousing Corporation by General Wholesale Distributors, Inc. by lease dated March 23, 1955 and known as Greenville, South Carolina, Warehouse #1

Scale - 1" = 20'

AUGUSTA ST.



21913

AUG 25 1955

10 A.M.

BB-20

#21913 Filed This 25 day of Aug. 1955  
 Recorded in Vol. BB Page 20  
 [Signature]  
 Register Mesne Conveyance Greenville County, S.C.