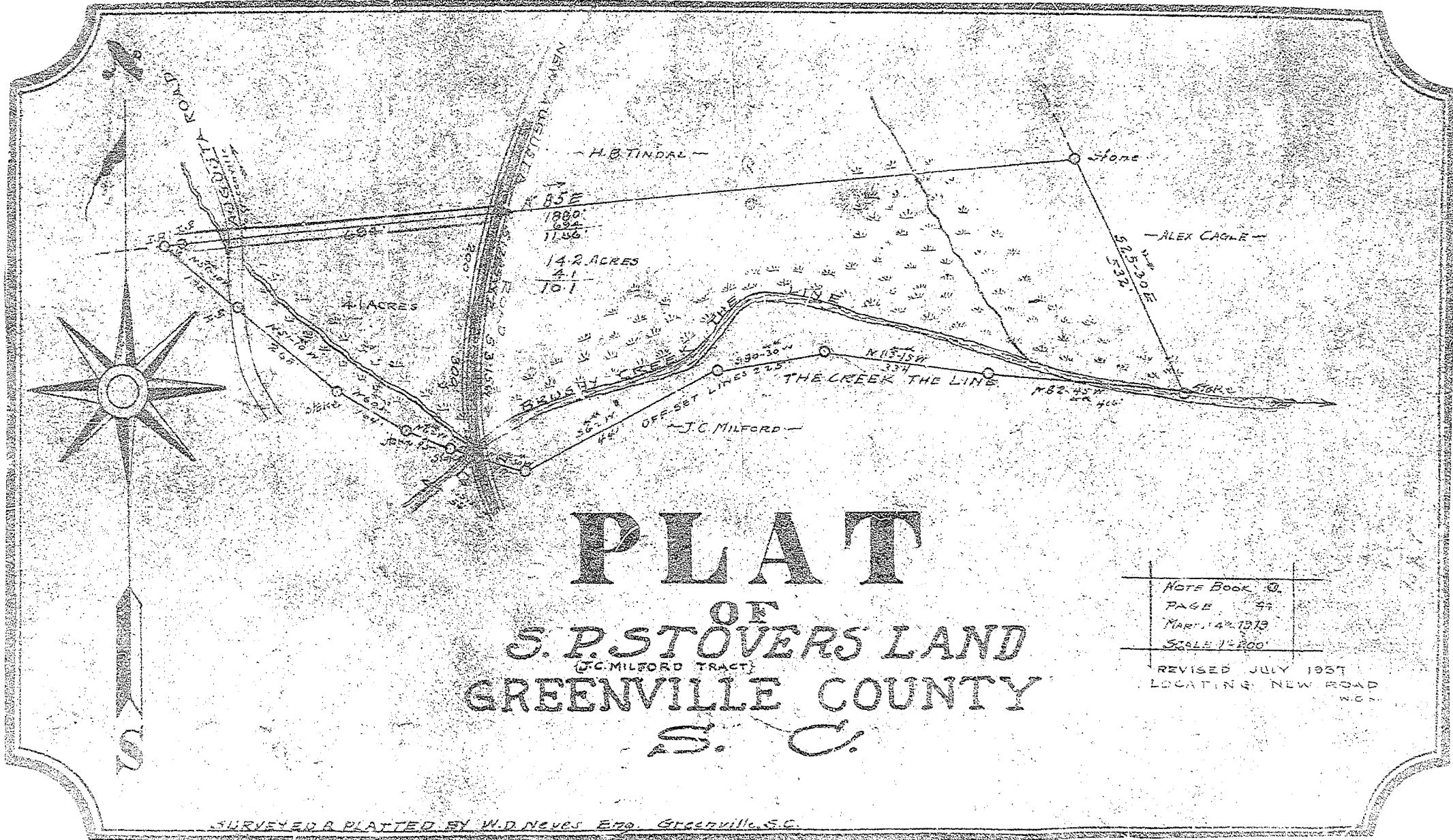


Surveyed and Platted by W.D. News, Greenville, S.C.



PLAT
 OF
S. P. STOVERS LAND
 (J.C. MILFORD TRACT)
GREENVILLE COUNTY
S. C.

NOTE BOOK 10,
PAGE 97
MAR. 14, 1919
SCALE 1"=200'
REVISED JULY 1957
LOCATING NEW ROAD
W.D.N.

SURVEYED & PLATTED BY W.D. NEWS, ENGR., GREENVILLE, S.C.

