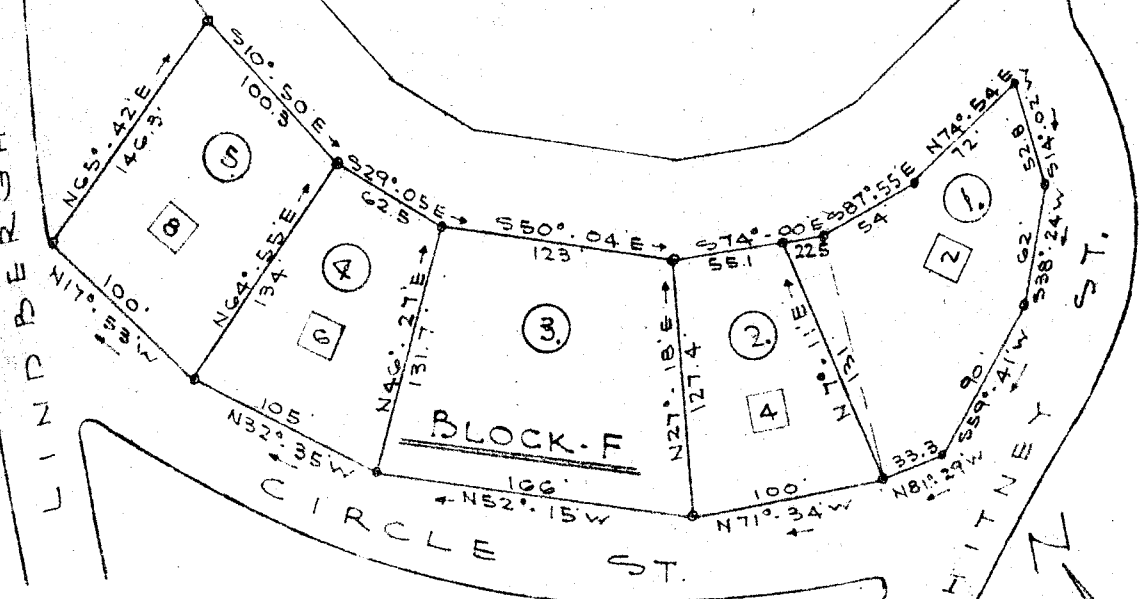


LINDERBERGH ST.



17901
AUG 3 1951

FILED
GREENVILLE CO. S. C.
AUG 3 10 14 AM 1951
OLLIE FARNSWORTH
R. M. C.

PLAT SHOWING REVISIONS OF
PROPERTY OF
SLATER MANUFACTURING CO.
SLATER, SOUTH CAROLINA
PICKELL & PICKELL, ENGINEERS
GREENVILLE, SOUTH CAROLINA
SCALE - 1" = 100' DATE - JULY 31, 1951

NOTE
LINE BETWEEN LOTS 1 AND 2 RELOCATED. ALL OTHER LOT LINES ARE AS WERE ESTABLISHED BY AN ORIGINAL SUBDIVISION BY J. E. SIRRINE & CO, ENGINEERS, DATED 7-10-40
IRON PINS LOCATED AT ALL CORNERS.

2 -

#17901 Filed This 3 day of Aug 1951
And Recorded in Vol. FF Page 115 at
Ollie Farnsworth
Register Mesne Conveyance Greenville County, S. C.