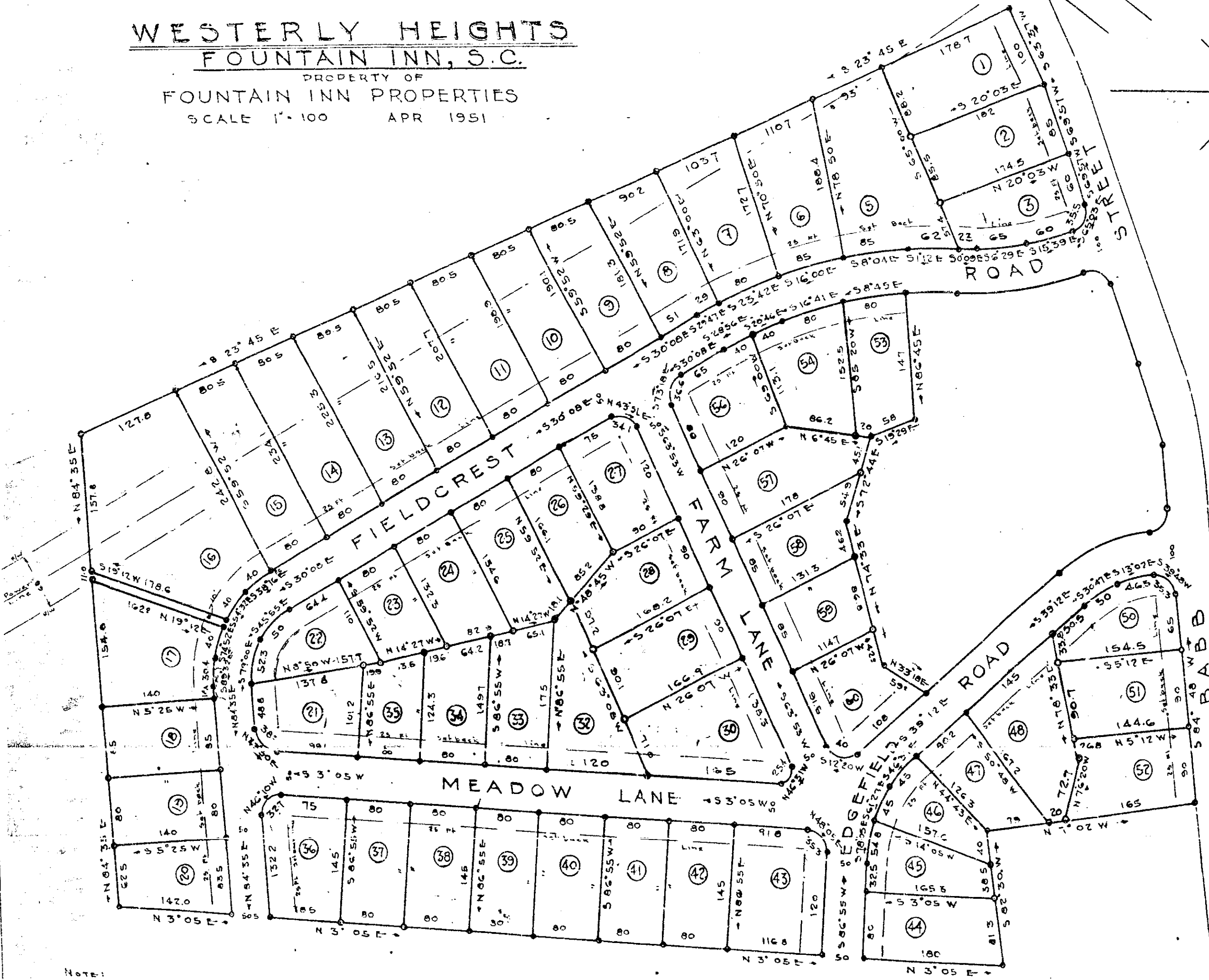
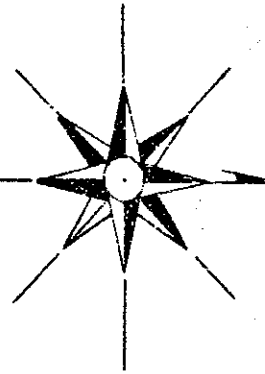


WESTERLY HEIGHTS FOUNTAIN INN, S.C.

PROPERTY OF
FOUNTAIN INN PROPERTIES
SCALE 1" = 100' APR 1951



#129 609 Plat 30 days of Map 1051
 And Recorded in Vol. R. F. Page 511 of 111
 Registrar Marie Covance (Greenville County, S. C.)

NOTE:
 Iron Pins At All Corners
 All Distances on Curves measured on Cord.