

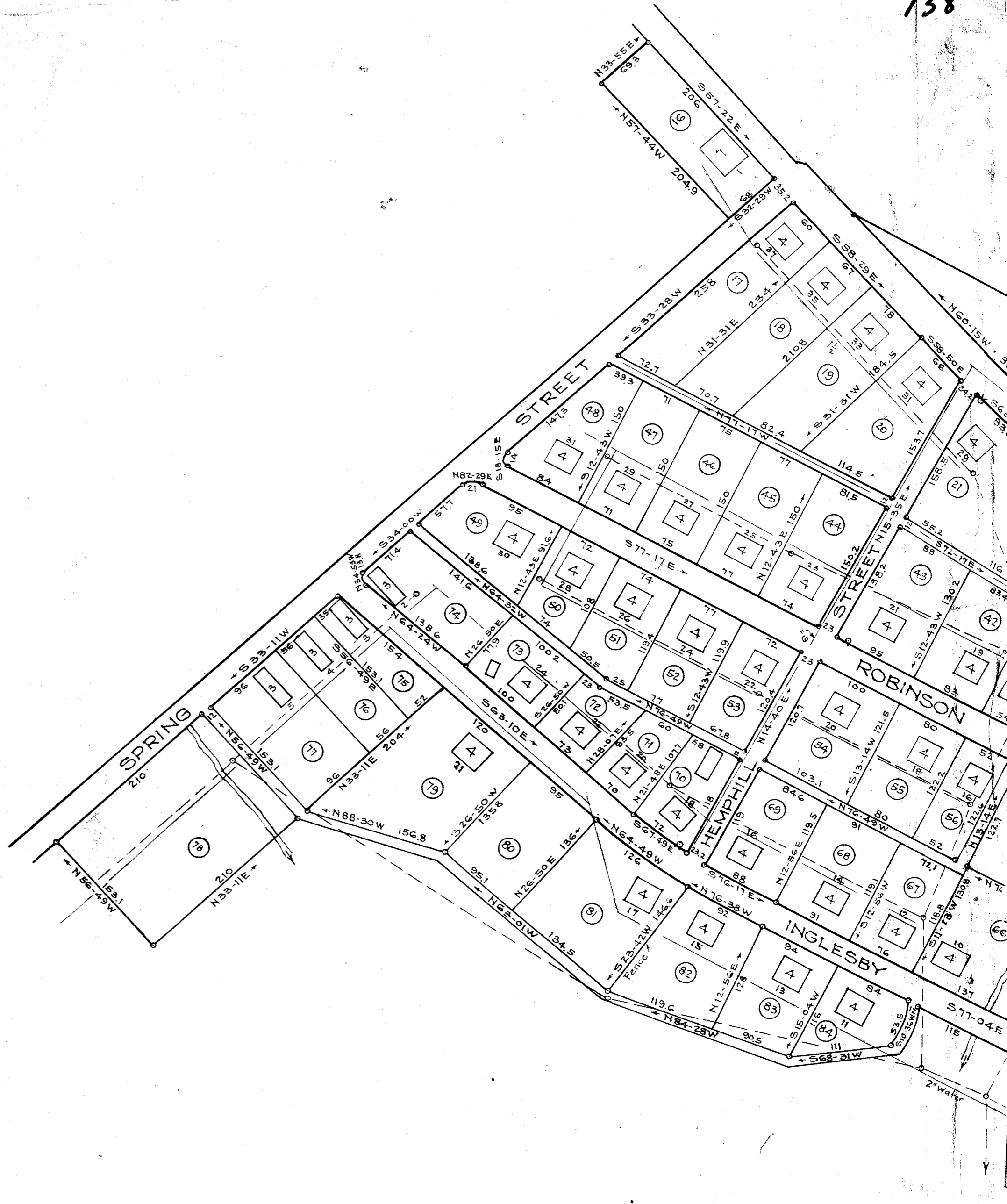
LEGEND:

- Hydrants &
- Sewer Mains
- Pole Lines
- Water Mains

part in
side of plot



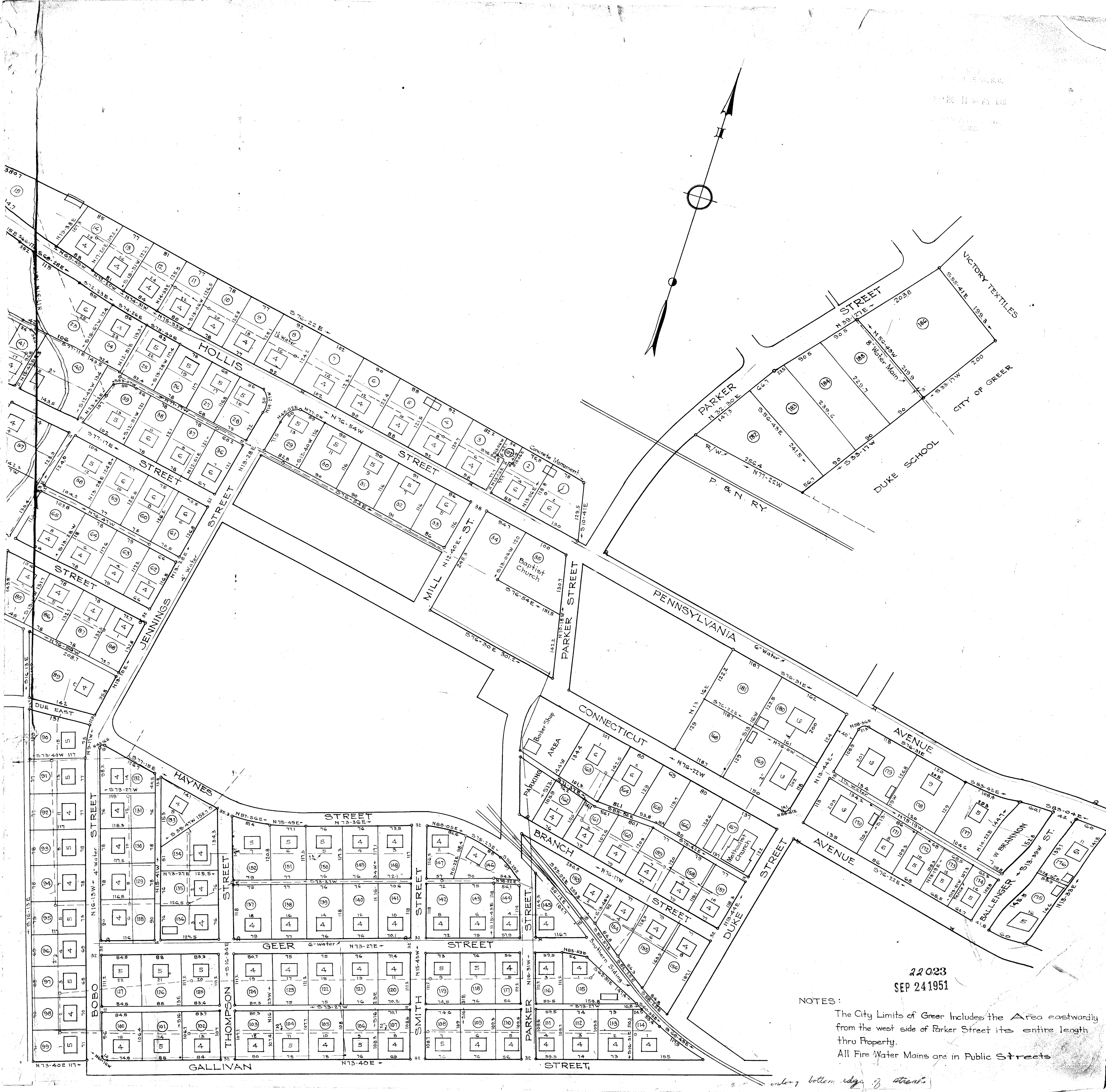
Iron Pins at all Corners



SUBDIVISION OF
 GREER MILL VILLAGE
 GREER S. C.
 Scale 1"=100' Jan. 1951

DALTON & NEVES
 GREENVILLE S. C.

#22023 Filed This 24 day of Sept. 1951
 And Recorded in Vol. 4 Page 138-139
 C. G. H. H. H.
 Register Meane Conveyance Greenville County, S. C.



22023
SEP 24 1951

NOTES:
The City Limits of Greer Includes the Area eastwardly
from the west side of Parker Street its entire length
thru Property.
All Fire Water Mains are in Public Streets

along bottom edge of street.