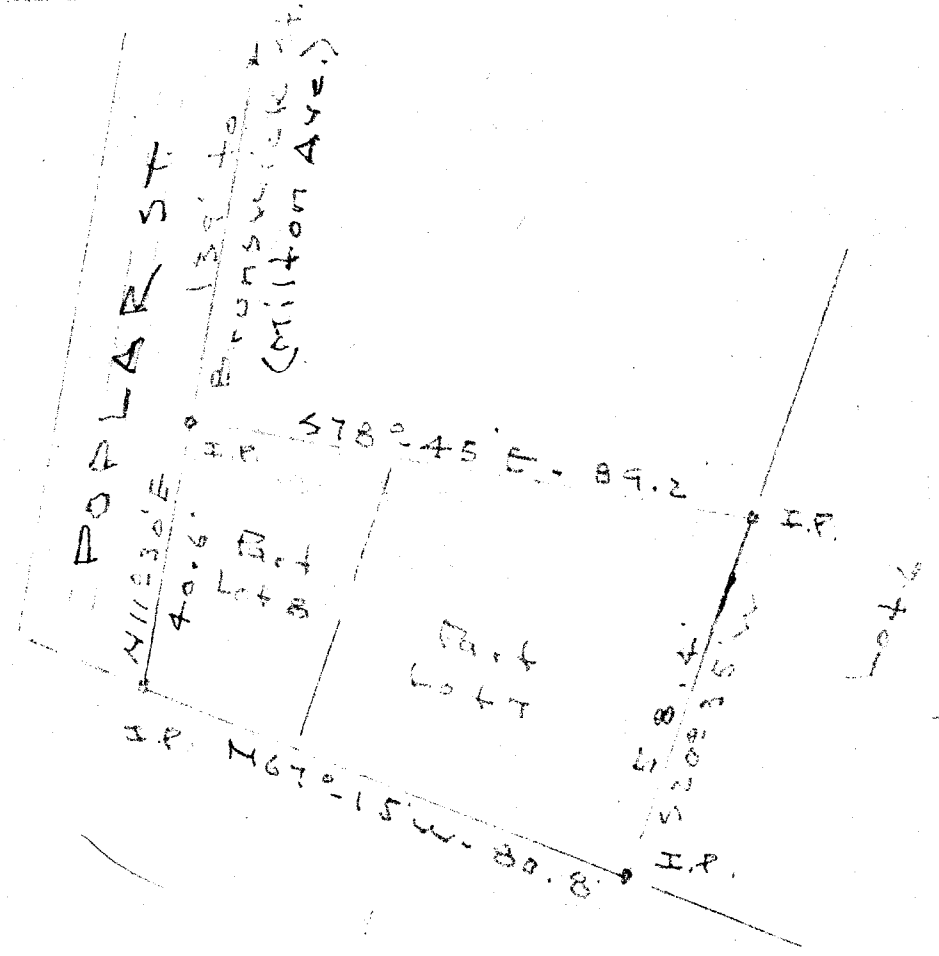


#26135 Filed This 7 day of Oct. 1955  
 And Recorded in Vol. 48  
 Ollie Farnsworth  
 Register Mesne Conveyance (Greenville County, S.C.)

48



PROPERTY OF  
**A. L. PATTON**  
 Part Lots 7 & 8 -- Prop. of Harry H. Palm  
 Near Greenville - S.C.  
 Scale 1" = 30' - Oct. 4 - 55

OCT 7 10 40 AM 1955  
 GREENVILLE CO. S.C.  
 OLLIE FARNSWORTH  
 R.M.C.

OCT 7 - 1955  
 26135

50

surplus in this block. Bearings are magnetic. "B" - 84 - J.C. Hill - L.S. 805