

See Plat 2/92, 93 & V/178 & X/H4

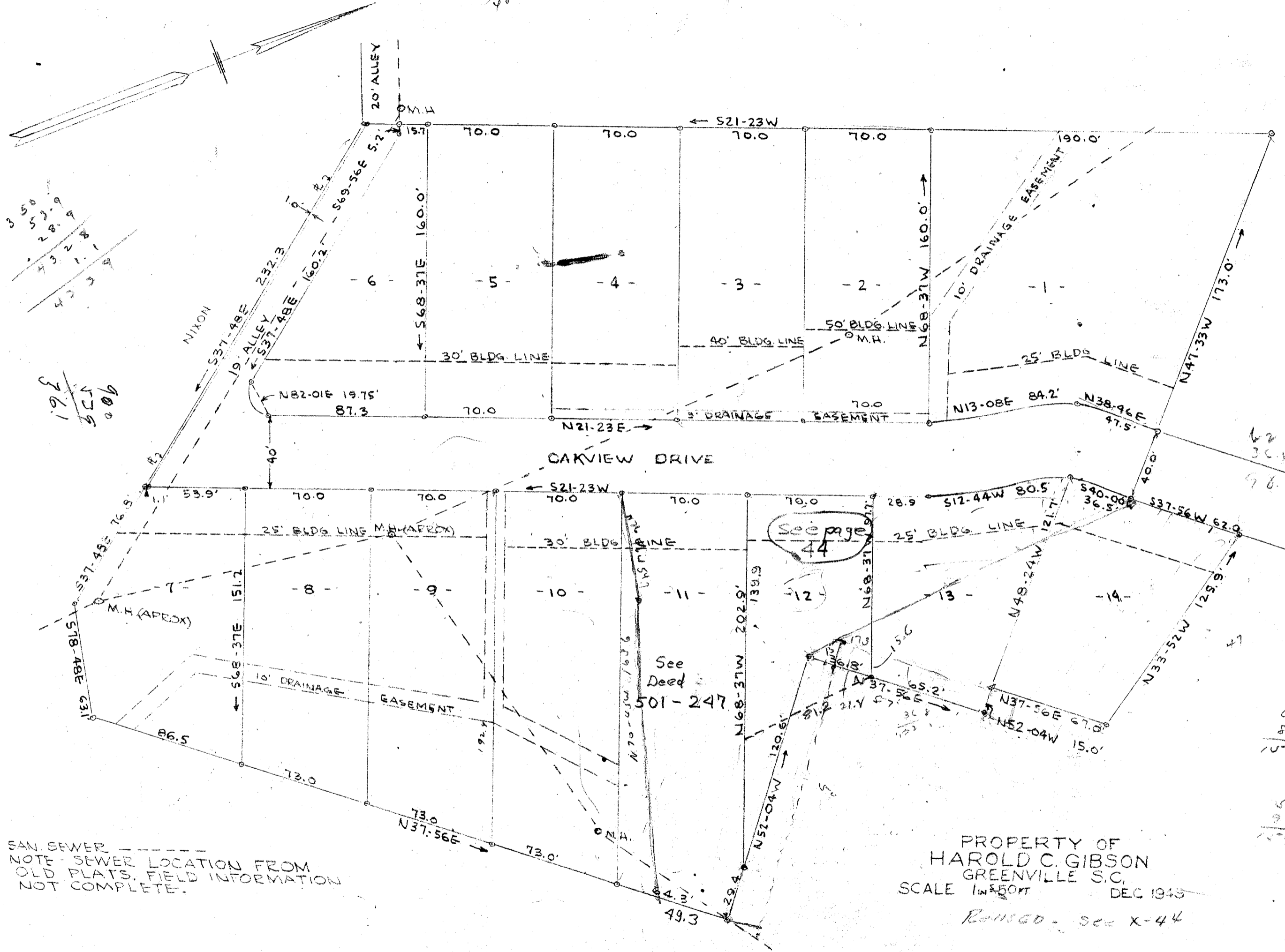
235.1
190
485.2

350
52.9
28.9
43.3
4

900
175
361

62
30.3
90

6
10
15
20
25
30
35
40
45
50
55
60
65
70
75
80
85
90
95
100



SAN. SEWER
NOTE - SEWER LOCATION FROM
OLD PLATS. FIELD INFORMATION
NOT COMPLETE.

PROPERTY OF
HAROLD C. GIBSON
GREENVILLE S.C.
SCALE 1"=50 FT DEC 1945
Revised - see X-44

SURVEYED BY
PIEDMONT ENGINEERING SERVICE
GREENVILLE S.C.

2324
Jan 28th 7-73.

B30P46

#3334 Filed This 28th day of Jan 1950
And Recorded in Vol. 73 of
David Hammons
Register Marine Conveyance Greenville County, S.C.

86.5
219
24.3
369.8