

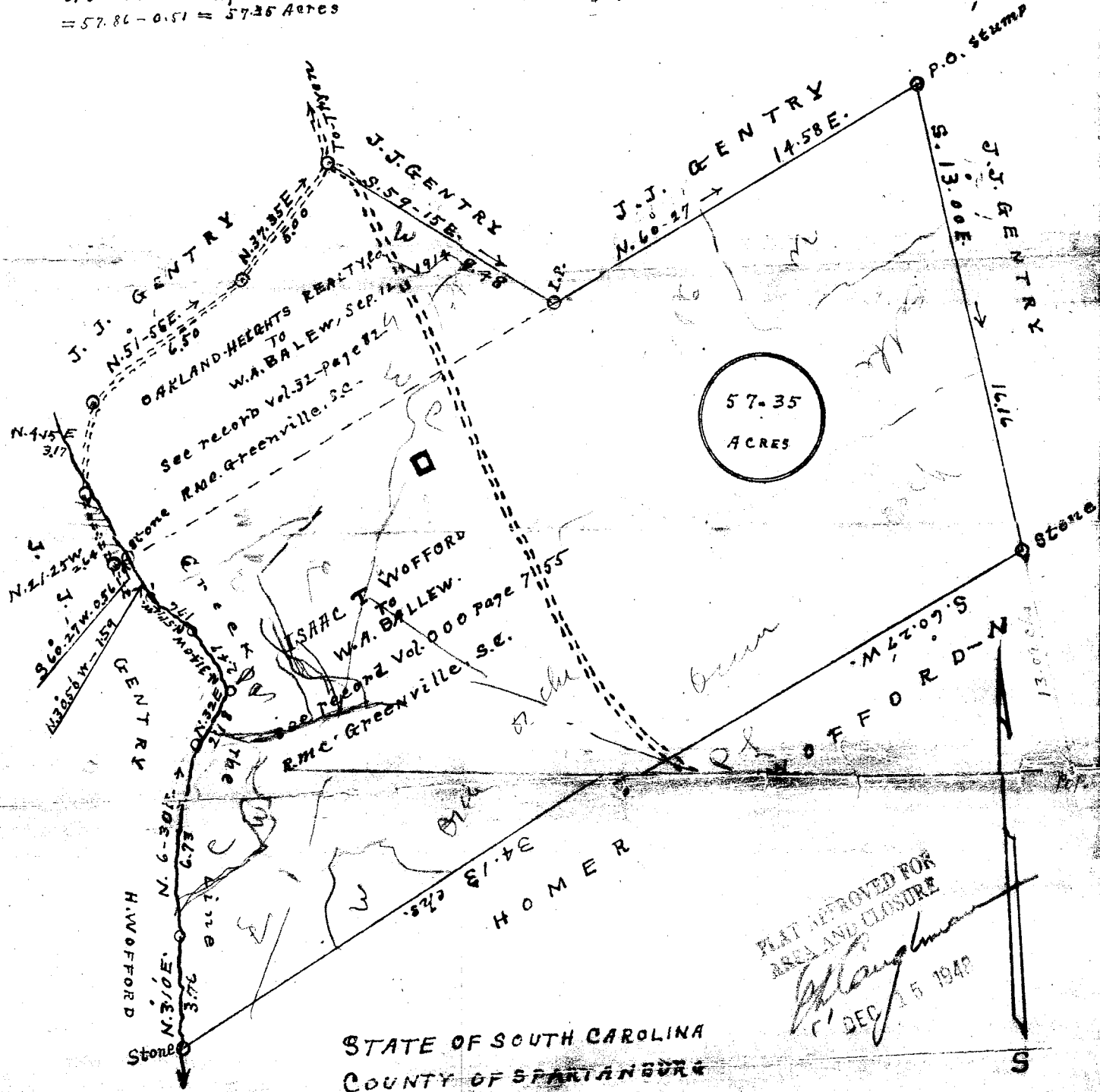
Scale: 1-inch = 500 Chains

98

NOTE:-

Offset Area along creek = 0.51 Acres Minus
= 57.86 - 0.51 = 57.35 Acres

Application 137139
W.A. BALLEW



I hereby certify that above plat is a true and accurate representation of a tract of land belonging to W.A. Ballew, located about two mile west of Landrum in Greenville County, South Carolina

This land was re-surveyed by me Nov. 11, 1921

J.H. Atkins Surveyor
Campobello, S.C.

#21319 9 Sept. 49

Callie F. Newirth